



International Office

Everest Biotech Ltd

Vector Laboratories, Inc.
6737 Mowry Ave
Newark, CA 94560
United States

Customer Service:

customerservice@vectorlabs.com

Technical Service:

technical@vectorlabs.com

Tel: +1 (800) 227-6666

www.everestbiotech.com

**Research Use Only. Not for
diagnostic or therapeutic use.**

EB10008 - Goat Anti-CCL21 Antibody

Size: 100µg specific antibody in 200µl



Target Protein

Principal Names: 6Ckine, beta chemokine exodus-2, chemokine (C-C motif) ligand 21, CKb9, ECL, Efficient Chemoattractant for Lymphocytes, exodus-2, MGC34555, SCYA21, secondary lymphoid tissue chemokine, SLC, small inducible cytokine A21, TCA4, CCL21

Official Symbol: CCL21

Accession Number(s): NP_002980.1

Human GeneID(s): [6366](#)

Important Comments: This antibody may cross-react with mouse CCL21 (GeneID: 18829) and rat CCL21 (GeneID: 298006).

Immunogen

Peptide with sequence QGCRKDRGASKTG, from the internal region of the protein sequence according to NP_002980.1.

Please note the [peptide](#) is available for sale.

Purification and Storage

Purified from goat serum by ammonium sulphate precipitation followed by antigen affinity chromatography using the immunizing peptide.

Supplied at 0.5 mg/ml in Tris saline, 0.02% sodium azide, pH7.3 with 0.5% bovine serum albumin.

Aliquot and store at -20°C. Minimize freezing and thawing.

Applications Tested

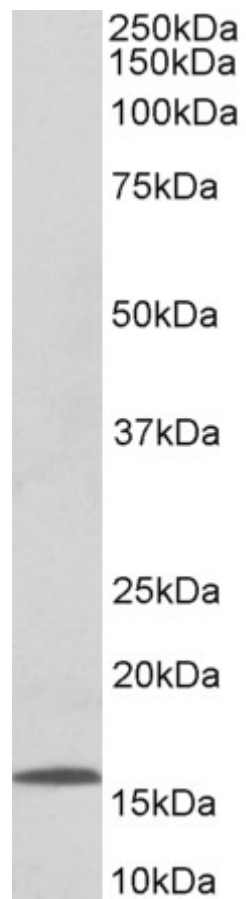
Peptide ELISA: antibody detection limit dilution 1:1000.

Western blot: Approx 16kDa band observed in Human Lymph Node lysates (calculated MW of 14.6kDa according to NP_002980.1). Recommended concentration: 0.03-0.1 µg/ml.

Species Reactivity

Tested: Human

Expected from sequence similarity: Human



EB10008 (0.1 μ g/ml) staining of Human Lymph Node lysate (35 μ g protein in RIPA buffer). Primary incubation was 1 hour. Detected by chemiluminescence.