

UK Office

Everest Biotech Ltd

Cherwell Innovation Centre
77 Heyford Park
Upper Heyford
Oxfordshire
OX25 5HD
UK

Enquiries:

info@everestbiotech.com

Sales:

sales@everestbiotech.com

Tech support:

support@everestbiotech.com

Tel: +44 (0)1869 238326

www.everestbiotech.com

**Research Use Only. Not for
diagnostic or therapeutic use.**

EB11040 - Goat Anti-CCP5 (mouse) Antibody

Size: 100µg specific antibody in 200µl



Target Protein

Principal Names: Agbl5, ATP/GTP binding protein-like 5, 4930455N08, 9430057O19Rik, CCP5, ATP/GTP-binding protein-like 5, OTTMUSP00000025344, OTTMUSP00000025346, OTTMUSP00000025347, OTTMUSP00000025350, OTTMUSP00000025351, carboxypeptidase 5, cytosolic, 4930455N08, 9430057O19Rik, ATP/GTP binding protein-like 5, ATP/GTP-binding protein-like 5, carboxypeptidase 5, cytosolic, CCP5, cytosolic carboxypeptidase-like protein 5, OTTMUSP00000025344, OTTMUSP00000025346, OTTMUSP00000025347, OTTMUSP00000025348, OTTMUSP00000025350, OTTMUSP00000025351, Agbl5

Official Symbol: Agbl5

Accession Number(s): NP_001041657.1

Non-Human GeneID(s): 231093 (mouse)

Important Comments: This antibody is expected to recognize reported isoform 3 (NP_001041657.1) only.

Immunogen

Peptide with sequence CFSKPEEAGSHVE, from the internal region of the protein sequence according to NP_001041657.1.

Please note the [peptide](#) is available for sale.

Purification and Storage

Purified from goat serum by ammonium sulphate precipitation followed by antigen affinity chromatography using the immunizing peptide.

Supplied at 0.5 mg/ml in Tris saline, 0.02% sodium azide, pH7.3 with 0.5% bovine serum albumin.

Aliquot and store at -20°C. Minimize freezing and thawing.

Applications Tested

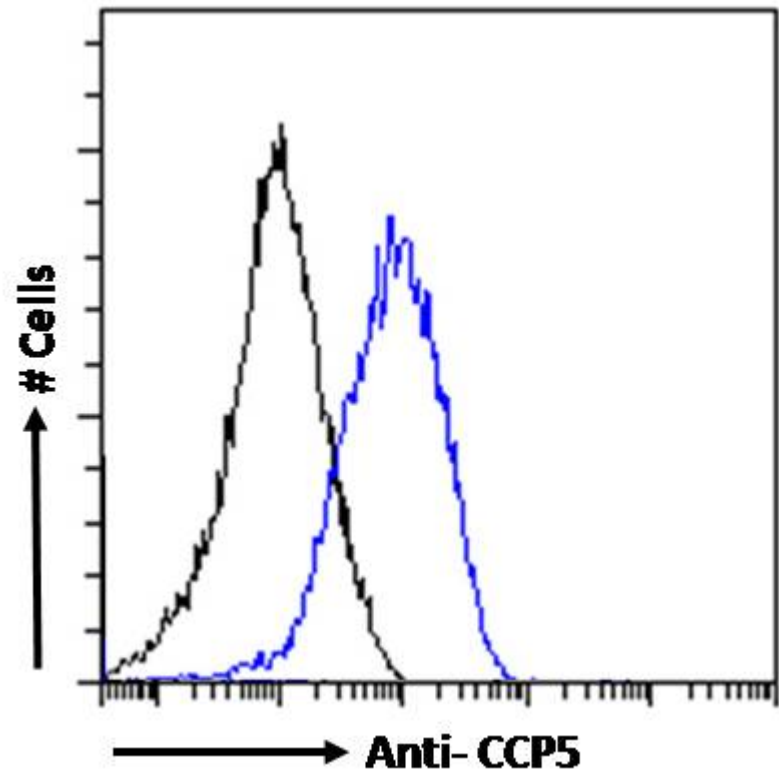
Peptide ELISA: antibody detection limit dilution 1:16000.

Flow Cytometry: Flow cytometric analysis of NIH3T3 cells. Recommended concentration: 10ug/ml.

Species Reactivity

Tested: Mouse

Expected from sequence similarity: Mouse



EB11040 Flow cytometric analysis of paraformaldehyde fixed NIH3T3 cells (blue line), permeabilized with 0.5% Triton. Primary incubation overnight (10ug/ml) followed by Alexa Fluor 488 secondary antibody (1ug/ml). IgG control: Unimmunized goat IgG (black line) followed by Alexa Fluor 488 secondary antibody.