

## International Office

### Everest Biotech Ltd

Vector Laboratories, Inc.  
6737 Mowry Ave  
Newark, CA 94560  
United States

Customer Service:

[customerservice@vectorlabs.com](mailto:customerservice@vectorlabs.com)

Technical Service:

[technical@vectorlabs.com](mailto:technical@vectorlabs.com)

Tel: +1 (800) 227-6666

[www.everestbiotech.com](http://www.everestbiotech.com)

**Research Use Only. Not for  
diagnostic or therapeutic use.**

## EB07239 - Goat Anti-CCR2 Antibody

Size: 100µg specific antibody in 200µl



### Target Protein

**Principal Names:** chemokine (C-C motif) receptor 2, HGNC:1603, CC-CKR-2, CCR2A, CCR2B, CKR2, CKR2A, CKR2B, CMKBR2, MCP-1-R, MCP-1 receptor, chemokine (C-C) receptor 2, monocyte chemoattractant protein 1 receptor, monocyte chemotactic protein 1 receptor

**Official Symbol:** CCR2

**Accession Number(s):** NP\_000638.1; NP\_000639.1

**Human GeneID(s):** [1231](#)

**Important Comments:** This antibody is expected to recognise both reported isoforms (NP\_000638.1 and NP\_000639.1).

### Immunogen

Peptide with sequence RFIRNTNESGEEVT-C, from the N Terminus of the protein sequence according to NP\_000638.1; NP\_000639.1.

Please note the [peptide](#) is available for sale.

### Purification and Storage

Purified from goat serum by ammonium sulphate precipitation followed by antigen affinity chromatography using the immunizing peptide.

Supplied at 0.5 mg/ml in Tris saline, 0.02% sodium azide, pH7.3 with 0.5% bovine serum albumin.

Aliquot and store at -20°C. Minimize freezing and thawing.

### Applications Tested

**Peptide ELISA:** antibody detection limit dilution 1:16000.

**IHC:** Paraffin embedded Human Tonsil. Recommended concentration: 6µg/ml.

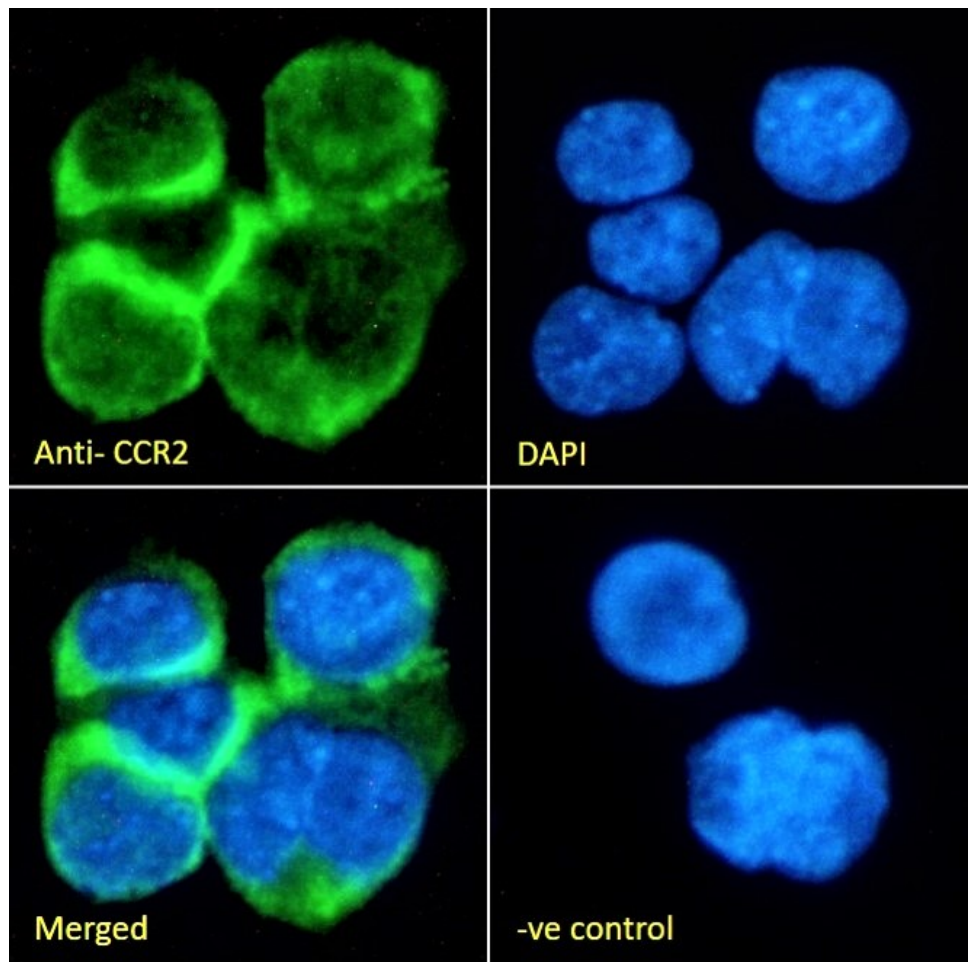
**Immunofluorescence:** Strong expression of the protein seen in the membranes and cytoplasm of THP-1 cells. Recommended concentration: 10µg/ml.

**Flow Cytometry:** Flow cytometric analysis of THP-1 cells. Recommended concentration: 10ug/ml.

### Species Reactivity

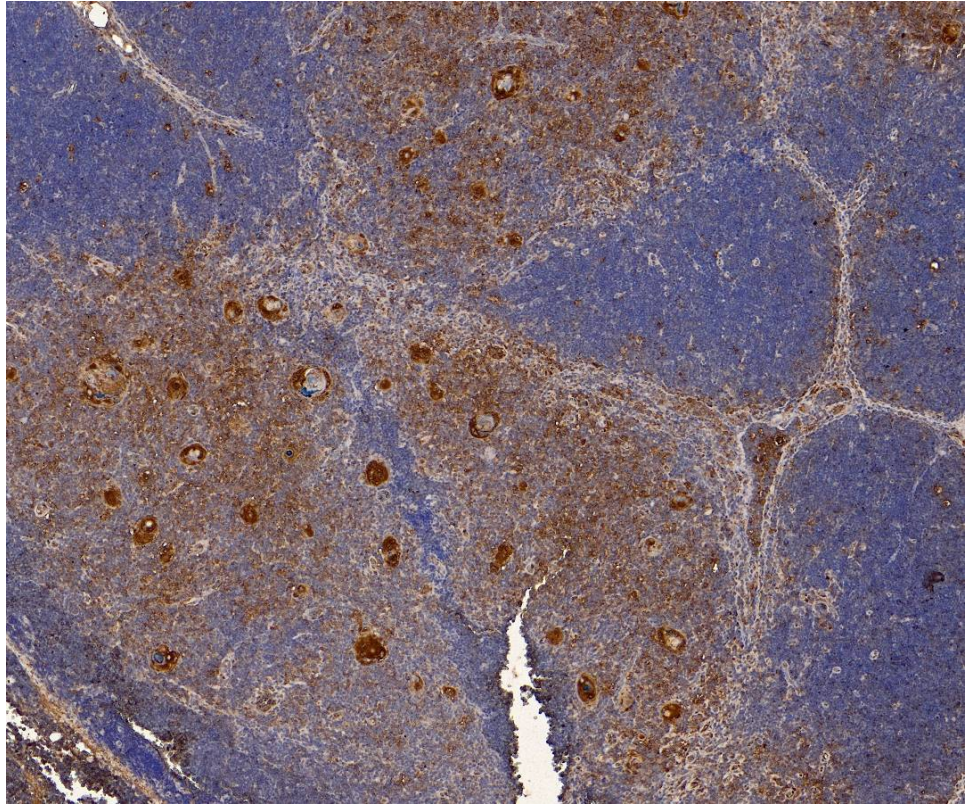
**Tested:** Human

**Expected from sequence similarity:** Human

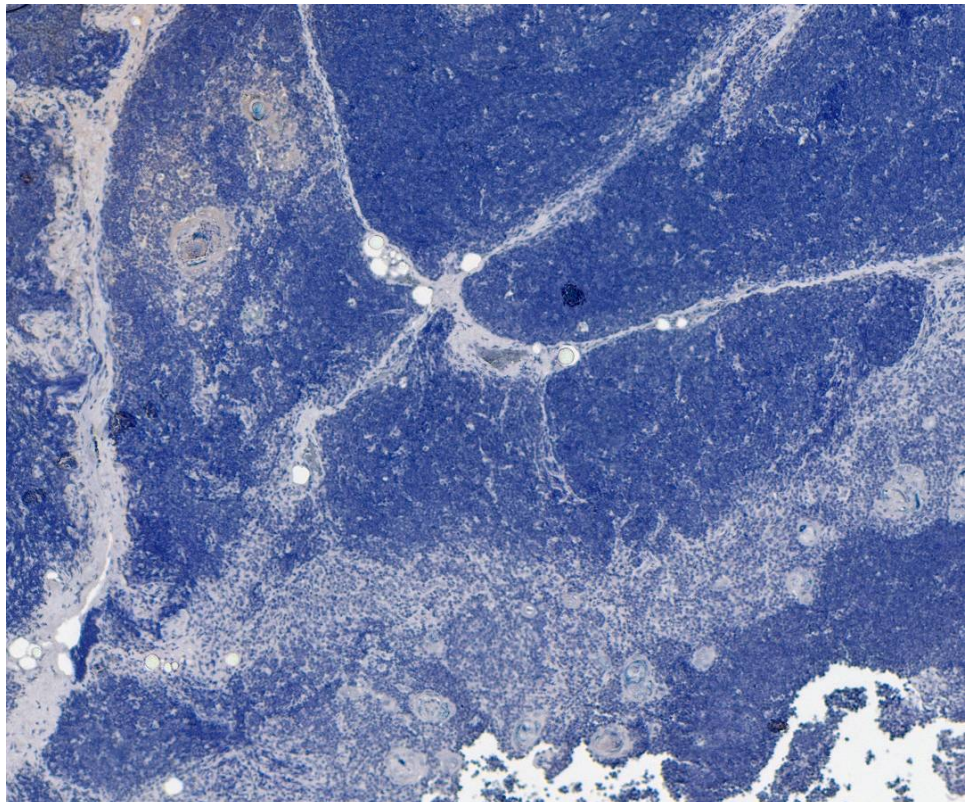


EB07239 Immunofluorescence analysis of paraformaldehyde fixed THP-1 cells immobilized on Shifix™ coverslip, permeabilized with 0.15% Triton. Primary incubation 1hr (10ug/ml) followed by Alexa Fluor 488 secondary antibody (2ug/ml), showing membrane and cytoplasmic staining. The nuclear stain is DAPI (blue). Negative control: Unimmunized goat IgG (10ug/ml) followed by Alexa Fluor 488 secondary antibody (2ug/ml).

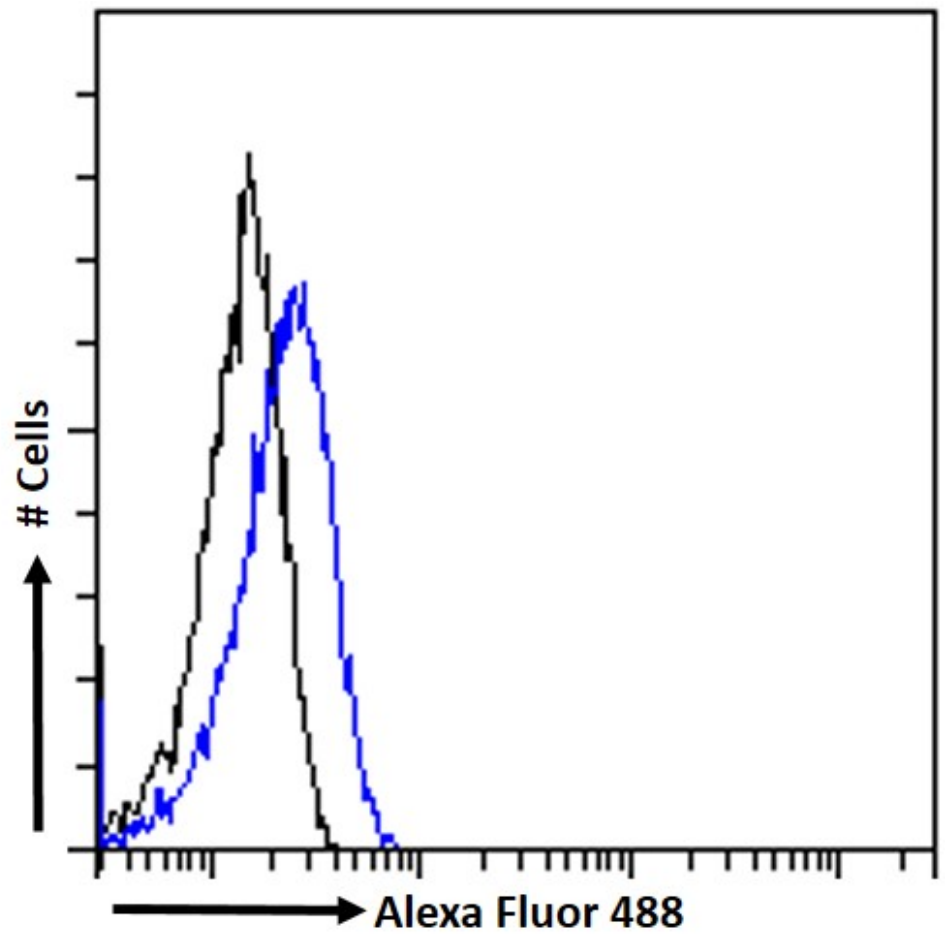




EB07239 (6µg/ml) staining of paraffin embedded Human Tonsil. Heat induced antigen retrieval with citrate buffer pH 6, HRP-staining.



EB07239 Negative Control showing staining of paraffin embedded Human Tonsil, with no primary antibody.



EB07239 Flow cytometric analysis of paraformaldehyde fixed THP1 cells (blue line) permeabilized with 0.5% Triton. Primary incubation 1hr (10ug/ml) followed by Alexa Fluor 488® conjugated secondary antibody (1ug/ml). IgG control: Unimmunized goat IgG (black line) followed by Alexa Fluor 488 secondary antibody.