



UK Office

Everest Biotech Ltd

Cherwell Innovation Centre
77 Heyford Park
Upper Heyford
Oxfordshire
OX25 5HD
UK

Enquiries:

info@everestbiotech.com

Sales:

sales@everestbiotech.com

Tech support:

support@everestbiotech.com

Tel: +44 (0)1869 238326

Fax: +44 (0)1869 238327

US Office

Everest Biotech c/o Abcore

405 Maple Street, Suite A106
Ramona,
CA 92065
USA

Inquiries:

info@everestbiotech.com

Sales:

usasales@everestbiotech.com

Tech support:

support@everestbiotech.com

Tel: 888-320-4628 (toll-free)

Fax: 888-841-9041

www.everestbiotech.com

**Research Use Only. Not for
diagnostic or therapeutic use.**

EB09403 - Goat Anti-CCT3 / TCP1 Antibody

Size: 100µg specific antibody in 200µl



Target Protein

Principal Names: CCT3, chaperonin containing TCP1, subunit 3 (gamma), CCT-gamma, CCTG, PIG48, TCP-1-gamma, TRIC5, OTTHUMP00000025735, T-complex protein 1, gamma subunit, TCP1 (t-complex-1) ring complex, polypeptide 5, chaperonin containing TCP1, subunit 3

Official Symbol: CCT3

Accession Number(s): NP_005989.3; NP_001008883.1; NP_001008800.1

Human GeneID(s): [7203](#)

Non-Human GeneID(s): 12462 (mouse), 295230 (rat)

Important Comments: This antibody is expected to recognize all reported isoforms (NP_005989.3; NP_001008883.1; NP_001008800.1).

Immunogen

Peptide with sequence C-GHKKKGDDQSRQGG, from the C-Terminus (near) of the protein sequence according to NP_005989.3; NP_001008883.1; NP_001008800.1.

Please note the [peptide](#) is available for sale.

Purification and Storage

Purified from goat serum by ammonium sulphate precipitation followed by antigen affinity chromatography using the immunizing peptide.

Supplied at 0.5 mg/ml in Tris saline, 0.02% sodium azide, pH7.3 with 0.5% bovine serum albumin.

Aliquot and store at -20°C. Minimize freezing and thawing.

Applications Tested

Peptide ELISA: antibody detection limit dilution 1:32000.

Western blot: Approx 65kDa band observed in Mouse Testis lysates (calculated MW of 60.5kDa according to Human NP_005989.3 and 60.6kDa according to Mouse NP_033966.1 and Rat NP_954522.1). Recommended concentration: 0.01-0.03µg/ml.

IHC: Paraffin embedded Human Tonsil. Recommended concentration: 5µg/ml.

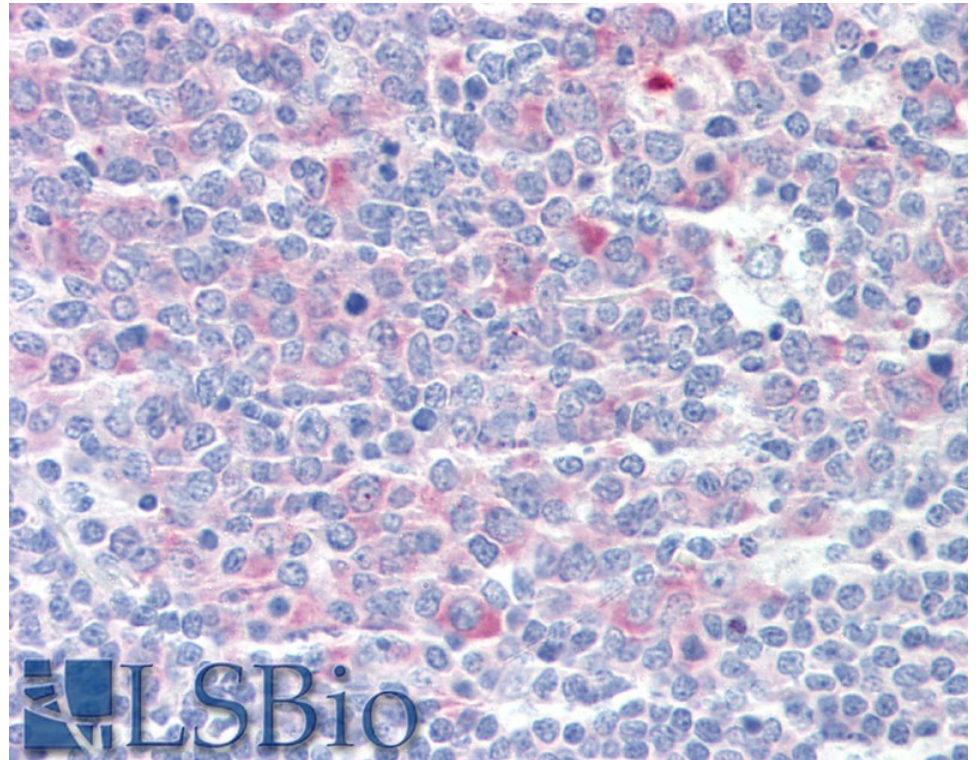
Species Reactivity

Tested: Human, Mouse

Expected from sequence similarity: Human, Mouse, Rat, Pig, Cow, Dog



EB09403 (0.01 μ g/ml) staining of Mouse Testis lysate (35 μ g protein in RIPA buffer). Primary incubation was 1 hour. Detected by chemiluminescence.



EB09403 (5 μ g/ml) staining of paraffin embedded Human Tonsil. Steamed antigen retrieval with citrate buffer pH 6, AP-staining.