

## UK Office

### Everest Biotech Ltd

Cherwell Innovation Centre  
77 Heyford Park  
Upper Heyford  
Oxfordshire  
OX25 5HD  
UK

Enquiries:

[info@everestbiotech.com](mailto:info@everestbiotech.com)

Sales:

[sales@everestbiotech.com](mailto:sales@everestbiotech.com)

Tech support:

[support@everestbiotech.com](mailto:support@everestbiotech.com)

Tel: +44 (0)1869 238326

[www.everestbiotech.com](http://www.everestbiotech.com)

**Research Use Only. Not for  
diagnostic or therapeutic use.**

## EB11362 - Goat Anti-CD128 / Cxcr2 (mouse) Antibody

Size: 100µg specific antibody in 200µl



### Target Protein

**Principal Names:** CD128, CDw128, chemokine (C-X-C motif) receptor 2, chemokine (C-X-C) receptor 2, Cmkar2, C-X-C chemokine receptor type 2, CXCR-2, CXC-R2, Gpcr16, GRO/MGSA receptor, high affinity interleukin-8 receptor B, IL-8 receptor alpha chain, IL-8R B, IL8RA, Il8rb, IL-8rb, IL-8Rh, interleukin 8 receptor, beta, interleukin-8 receptor type B, mIL-8RH, Cxcr2

**Official Symbol:** Cxcr2

**Accession Number(s):** NP\_034039.1

**Human GeneID(s):** [3579](#)

**Important Comments:** Reported isoforms represent identical protein: NP\_001548.1, NP\_001161770.1. The immunizing peptide represent part of an extracellular domain.

### Immunogen

Peptide with sequence EFKVDKFNIED-C, from the N Terminus of the protein sequence according to NP\_034039.1.

Please note the [peptide](#) is available for sale.

### Purification and Storage

Purified from goat serum by ammonium sulphate precipitation followed by antigen affinity chromatography using the immunizing peptide.

Supplied at 0.5 mg/ml in Tris saline, 0.02% sodium azide, pH7.3 with 0.5% bovine serum albumin.

Aliquot and store at -20°C. Minimize freezing and thawing.

### Applications Tested

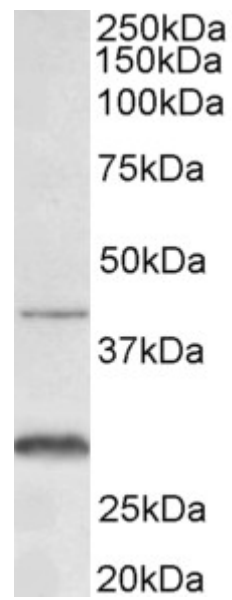
**Peptide ELISA:** antibody detection limit dilution 1:128000.

**Western blot:** Approx 40kDa band observed in Mouse Colon lysates (calculated MW of 40.4kDa according to NP\_034039.1). Recommended concentration: 0.3-1µg/ml. An additional band of unknown identity was also consistently observed at 28kDa. This band was successfully blocked by incubation with the immunizing peptide. We would appreciate any feedback from people in the field - have any such results been reported with other antibodies/lysates? Have any further splice variants/modified forms been reported?

### Species Reactivity

**Tested:** Mouse

**Expected from sequence similarity:** Mouse



EB11362 (0.3 $\mu$ g/ml) staining of Mouse Colon lysate (35 $\mu$ g protein in RIPA buffer). Primary incubation was 1 hour. Detected by chemiluminescence.