



## UK Office

### Everest Biotech Ltd

Cherwell Innovation Centre  
77 Heyford Park  
Upper Heyford  
Oxfordshire  
OX25 5HD  
UK

Enquiries:

[info@everestbiotech.com](mailto:info@everestbiotech.com)

Sales:

[sales@everestbiotech.com](mailto:sales@everestbiotech.com)

Tech support:

[support@everestbiotech.com](mailto:support@everestbiotech.com)

Tel: +44 (0)1869 238326

[www.everestbiotech.com](http://www.everestbiotech.com)

**Research Use Only. Not for  
diagnostic or therapeutic use.**

## EB07103-T - Goat Anti-CD14 Antibody - Trial

Size: 20µg specific antibody in 40µl



### Target Protein

**Principal Names:** CD14, CD14 antigen, HGNC:1628

**Official Symbol:** CD14

**Accession Number(s):** NP\_000582.1

**Human GeneID(s):** [929](#)

### Immunogen

Peptide with sequence C-KRVDADADPRQYAD, from the internal region of the protein sequence according to NP\_000582.1.

Please note the [peptide](#) is available for sale.

### Purification and Storage

Purified from goat serum by ammonium sulphate precipitation followed by antigen affinity chromatography using the immunizing peptide.

Supplied at 0.5 mg/ml in Tris saline, 0.02% sodium azide, pH7.3 with 0.5% bovine serum albumin.

Aliquot and store at -20°C. Minimize freezing and thawing.

### Applications Tested

**Peptide ELISA:** antibody detection limit dilution 1:128000.

**Western blot:** Approx 55kDa band observed in Human Lymph node and Tonsil lysates (calculated MW of 40.1kDa according to NP\_000582.1). The observed molecular weight corresponds to the glycosylated form, and was successfully blocked by incubation with the immunizing peptide. Recommended concentration: 1-3µg/ml. Primary incubation 1 hour at room temperature.

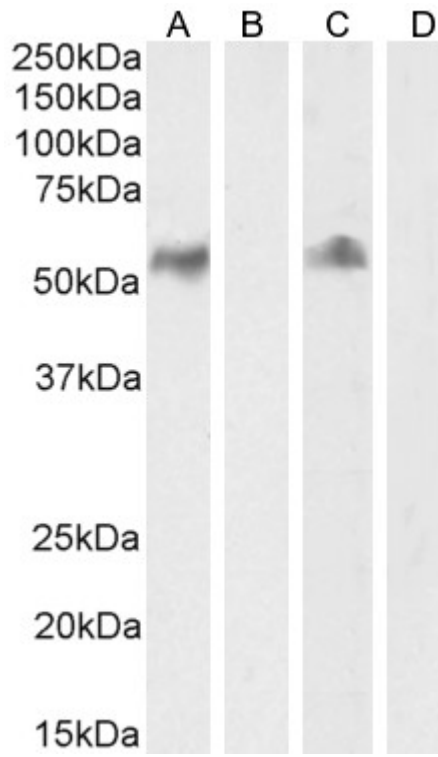
**IHC:** Paraffin embedded Human Tonsil. Recommended concentration: 6-8µg/ml. Weak positive staining of Non germinal center cells in Human Lymph Node was also observed.

**Flow Cytometry:** Flow cytometric analysis of A549 cells. Recommended concentration: 10ug/ml.

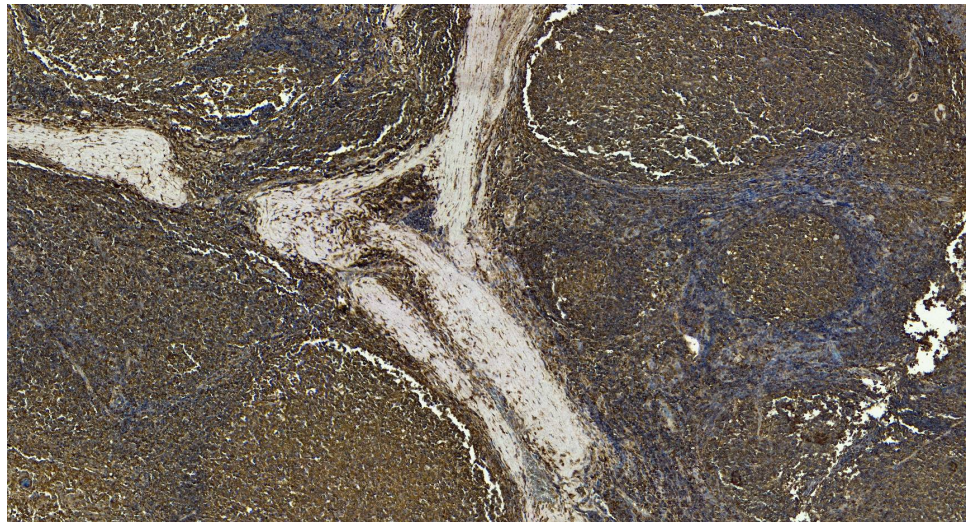
### Species Reactivity

**Tested:** Human

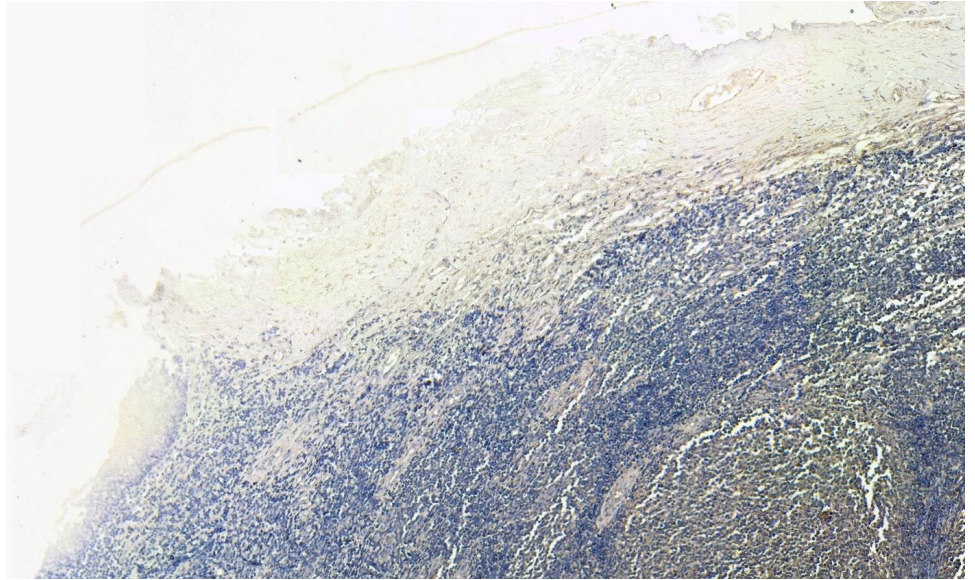
**Expected from sequence similarity:** Human



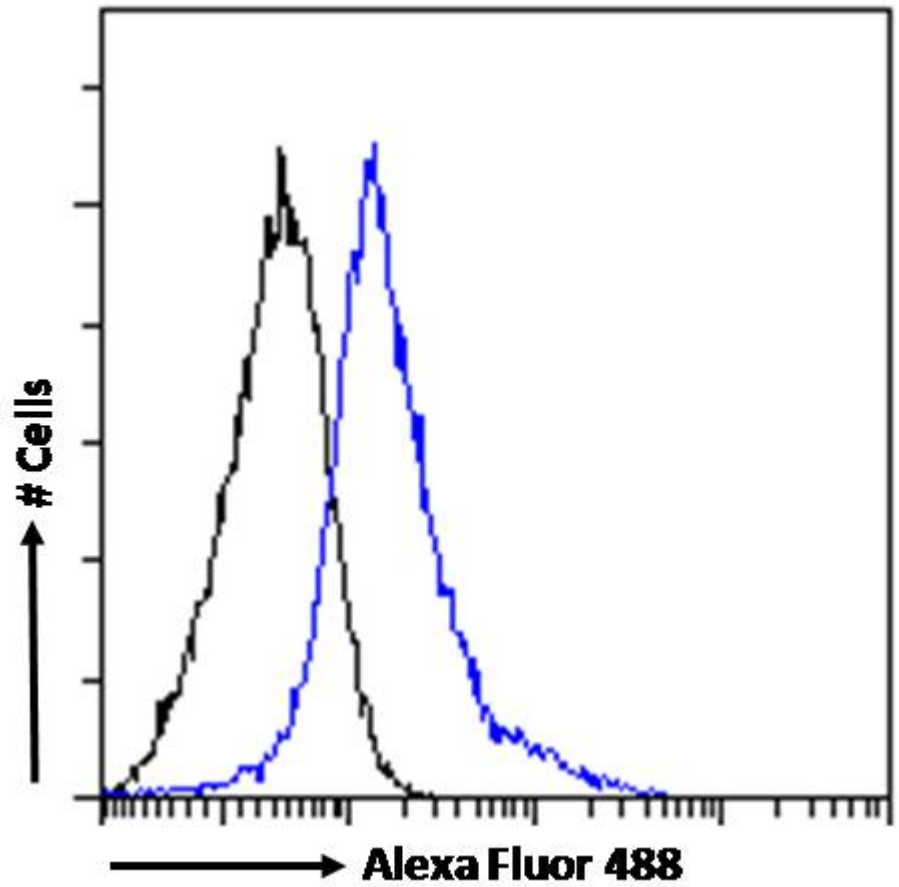
EB07103 (2 $\mu$ g/ml) staining of Human Lymph node (A) + peptide (B) and Tonsil (C) + peptide (D) lysate (35 $\mu$ g protein in RIPA buffer) Detected by chemiluminescence.



EB07103 (8 $\mu$ g/ml) staining of paraffin embedded Human Tonsil. Heat induced antigen retrieval with citrate buffer pH 6, HRP-staining.



EB07103 Negative Control showing staining of paraffin embedded Human Tonsil, with no primary antibody.



EB07103 Flow cytometric analysis of paraformaldehyde fixed A549 cells (blue line), permeabilized with 0.5% Triton. Primary incubation 1hr (10ug/ml) followed by Alexa Fluor 488 secondary antibody (1ug/ml). IgG control: Unimmunized goat IgG (black line) followed by Alexa Fluor 488 secondary antibody.