



International Office

Everest Biotech Ltd

Vector Laboratories, Inc.
6737 Mowry Ave
Newark, CA 94560
United States

Customer Service:

customerservice@vectorlabs.com

Technical Service:

technical@vectorlabs.com

Tel: +1 (800) 227-6666

www.everestbiotech.com

**Research Use Only. Not for
diagnostic or therapeutic use.**

EB12341 - Goat Anti-CD163 (aa871-882) Antibody

Size: 100µg specific antibody in 200µl



Target Protein

Principal Names: CD163, CD163 molecule, M130, MM130, hemoglobin scavenger receptor, macrophage-associated antigen, scavenger receptor cysteine-rich type 1 protein M130

Official Symbol: CD163

Accession Number(s): NP_004235.4; NP_981961.2

Human GeneID(s): [9332](#)

Important Comments: This antibody is expected to recognize both reported isoforms (NP_004235.4; NP_981961.2).

Immunogen

Peptide with sequence C-DKGKINPASLDK, from the internal region of the protein sequence according to NP_004235.4; NP_981961.2.

Please note the [peptide](#) is available for sale.

Purification and Storage

Purified from goat serum by ammonium sulphate precipitation followed by antigen affinity chromatography using the immunizing peptide.

Supplied at 0.5 mg/ml in Tris saline, 0.02% sodium azide, pH7.3 with 0.5% bovine serum albumin.

Aliquot and store at -20°C. Minimize freezing and thawing.

Applications Tested

Peptide ELISA: antibody detection limit dilution 1:128000.

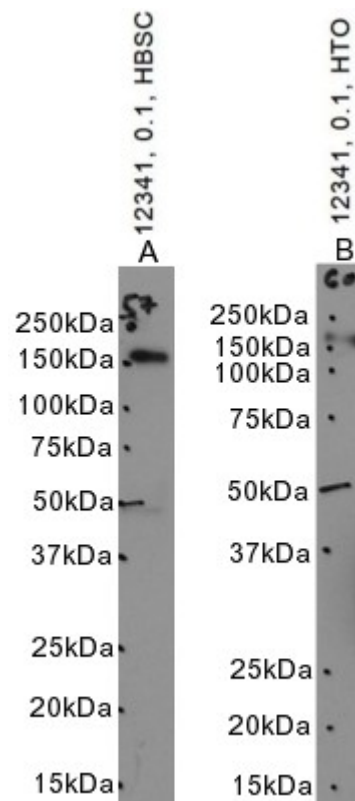
Western blot: Approx. 150kDa band observed in Human Spinal Cord and Tonsil lysates, and in preliminary testing of Human Bone Marrow lysate (calculated MW of 125kDa according to NP_004235.4). Molecular weights of 150-200kDa have been observed by other commercial sources. Recommended concentration: 0.03-0.1µg/ml. Primary incubation 1 hour at room temperature.

IHC: Paraffin embedded Human Spleen. Recommended concentration: 5µg/ml.

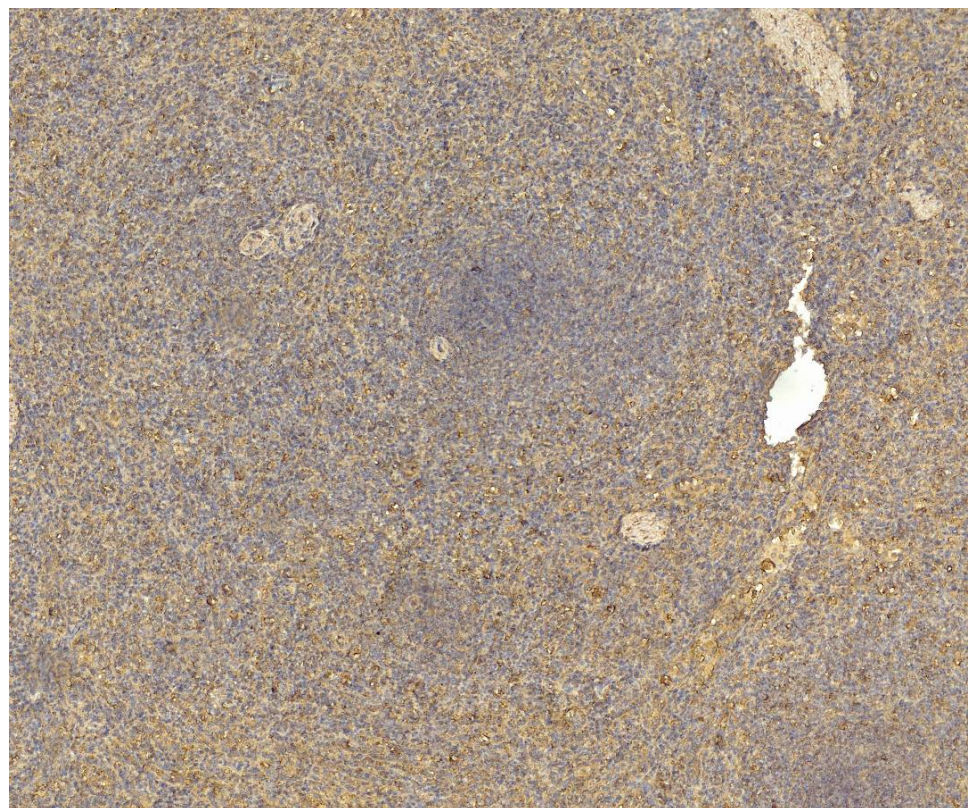
Species Reactivity

Tested: Human

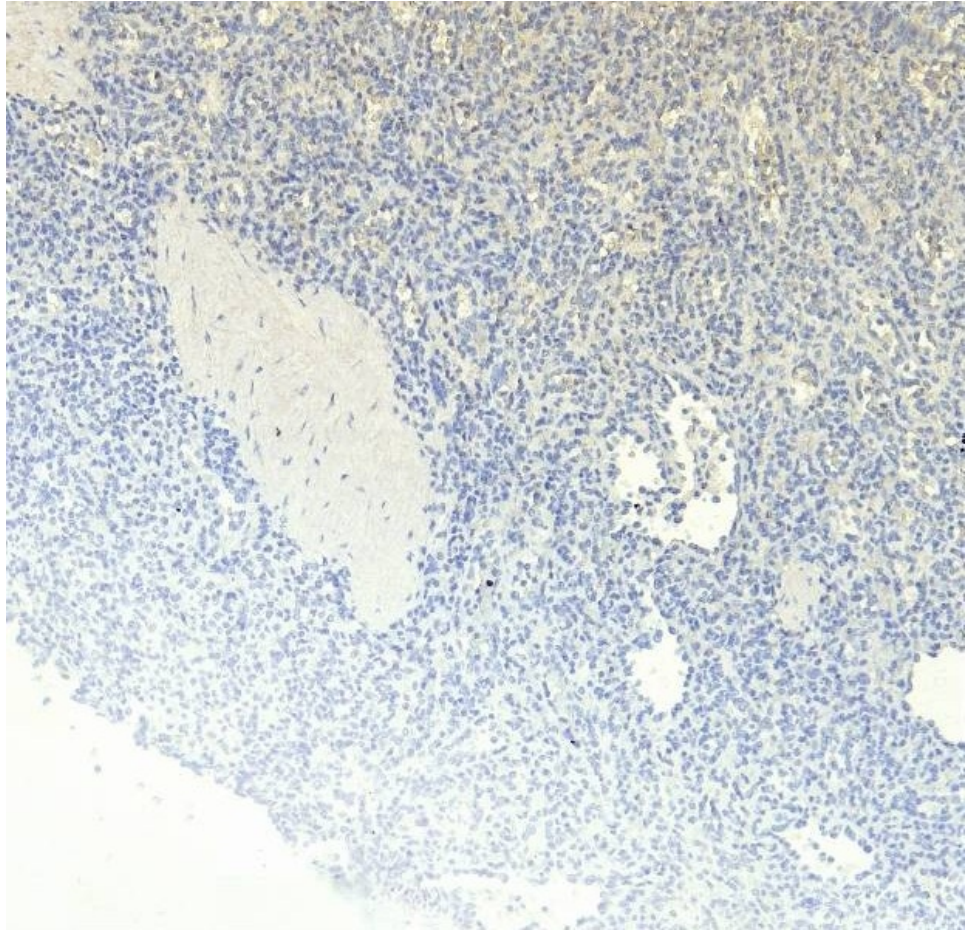
Expected from sequence similarity: Human



EB12431 optimised QC. Primary incubation 1 hour at room temperature.
 Images A, B: Human Spinal Cord, Tonsil lysate at primary Ab concentration 0.1ug/ml.
 (Loaded 35µg protein in RIPA buffer, per lane). Detected by chemiluminescence.



EB12341 (5µg/ml) staining of paraffin embedded Human Spleen. Heat induced antigen retrieval with citrate buffer pH 6, HRP-staining.



EB12341 Negative Control showing staining of paraffin embedded Human Spleen, with no primary antibody.