

UK Office

Everest Biotech Ltd

Cherwell Innovation Centre
77 Heyford Park
Upper Heyford
Oxfordshire
OX25 5HD
UK

Enquiries:

info@everestbiotech.com

Sales:

sales@everestbiotech.com

Tech support:

support@everestbiotech.com

Tel: +44 (0)1869 238326

www.everestbiotech.com

**Research Use Only. Not for
diagnostic or therapeutic use.**

EB12340 - Goat Anti-CD163 Antibody

Size: 100µg specific antibody in 200µl



Target Protein

Principal Names: CD163, CD163 molecule, M130, MM130, hemoglobin scavenger receptor, macrophage-associated antigen, scavenger receptor cysteine-rich type 1 protein M130

Official Symbol: CD163

Accession Number(s): NP_004235.4; NP_981961.2;

Human GeneID(s): [9332](#)

Important Comments: This antibody is expected to recognize both reported isoforms (NP_004235.4; NP_981961.2).

Immunogen

Peptide with sequence C-SRGENLVHGIQYRE, from the internal region (near C terminus) of the protein sequence according to NP_004235.4; NP_981961.2;.

Please note the [peptide](#) is available for sale.

Purification and Storage

Purified from goat serum by ammonium sulphate precipitation followed by antigen affinity chromatography using the immunizing peptide.

Supplied at 0.5 mg/ml in Tris saline, 0.02% sodium azide, pH7.3 with 0.5% bovine serum albumin.

Aliquot and store at -20°C. Minimize freezing and thawing.

Applications Tested

Peptide ELISA: antibody detection limit dilution 1:128000.

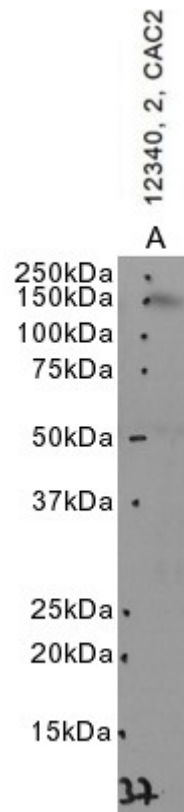
Western blot: Approx. 150kDa band observed in lysates of cell line Caco-2 (calculated MW of 125kDa according to NP_004235.4). Molecular weights of 150-200kDa have been observed by other commercial sources. Recommended concentration: 1-3µg/ml. Primary incubation 1 hour at room temperature.

IHC: Paraffin embedded Human Spleen. Recommended concentration: 5µg/ml.

Species Reactivity

Tested: Human

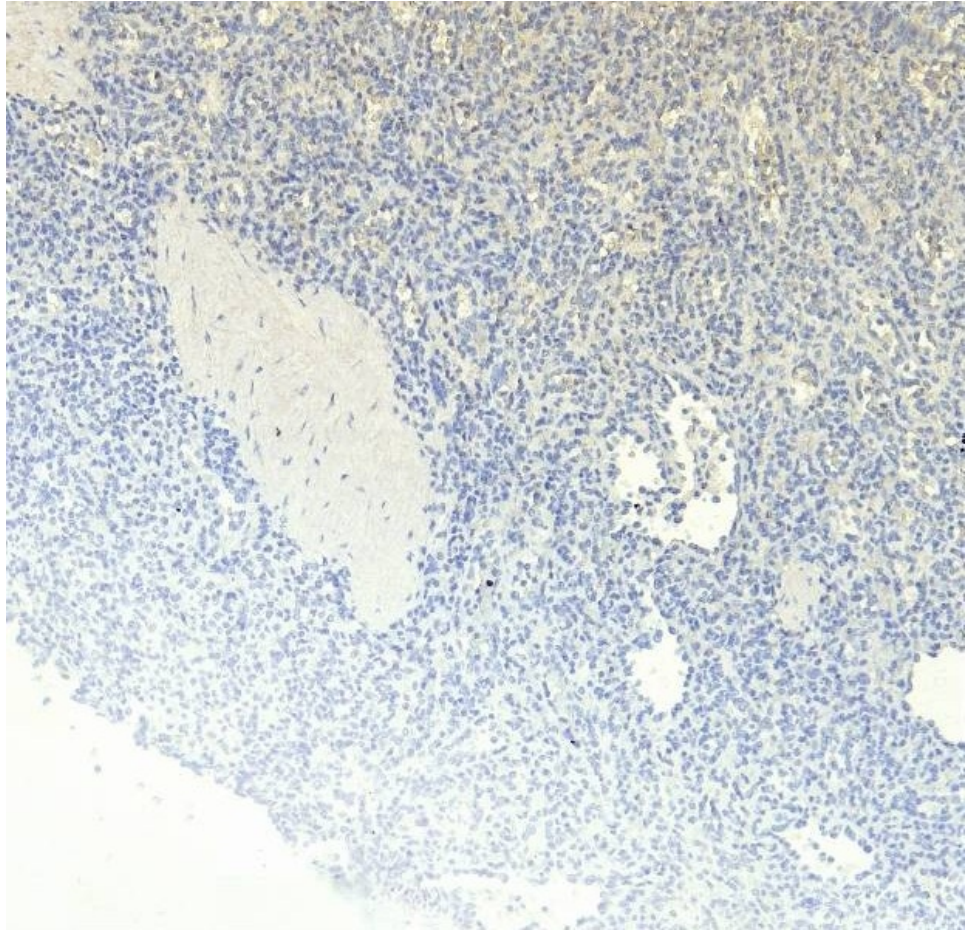
Expected from sequence similarity: Human



EB12340 optimised QC. Primary incubation 1 hour at room temperature.
 Image A: Caco-2 cell lysate at primary Ab concentration 2ug/ml. (Loaded 35µg protein in RIPA buffer, per lane). Detected by chemiluminescence.



EB12340 (5µg/ml) staining of paraffin embedded Human Spleen. Heat induced antigen retrieval with citrate buffer pH 6, HRP-staining.



EB12340 Negative Control showing staining of paraffin embedded Human Spleen, with no primary antibody.