



UK Office

Everest Biotech Ltd

Cherwell Innovation Centre
77 Heyford Park
Upper Heyford
Oxfordshire
OX25 5HD
UK

Enquiries:

info@everestbiotech.com

Sales:

sales@everestbiotech.com

Tech support:

support@everestbiotech.com

Tel: +44 (0)1869 238326

Fax: +44 (0)1869 238327

US Office

Everest Biotech c/o Abcore

405 Maple Street, Suite A106
Ramona,
CA 92065
USA

Inquiries:

info@everestbiotech.com

Sales:

usasales@everestbiotech.com

Tech support:

support@everestbiotech.com

Tel: 888-320-4628 (toll-free)

Fax: 888-841-9041

www.everestbiotech.com

**Research Use Only. Not for
diagnostic or therapeutic use.**

EB05140 - Goat Anti-CD20 / MS4A1 (C Terminus) Antibody

Size: 100µg specific antibody in 200µl



Target Protein

Principal Names: MS4A1, membrane-spanning 4-domains, subfamily A, member 1, B1, S7, BP35, CD20, LEU-16, MGC3969, CD20 antigen, CD20 receptor, B-lymphocyte cell-surface antigen B1, CVID5, leukocyte surface antigen Leu-16, MS4A2

Official Symbol: MS4A1

Accession Number(s): NP_068769.2; NP_690605.1

Human GeneID(s): [931](#)

Important Comments: Please note that both reported variants (NP_068769.2 and NP_690605.1) encode the same protein.

Immunogen

Peptide with sequence CQDQESSPIENDSSP, from the C Terminus of the protein sequence according to NP_068769.2; NP_690605.1.

Please note the [peptide](#) is available for sale.

Purification and Storage

Purified from goat serum by ammonium sulphate precipitation followed by antigen affinity chromatography using the immunizing peptide.

Supplied at 0.5 mg/ml in Tris saline, 0.02% sodium azide, pH7.3 with 0.5% bovine serum albumin.

Aliquot and store at -20°C. Minimize freezing and thawing.

Applications Tested

Peptide ELISA: antibody detection limit dilution 1:2000.

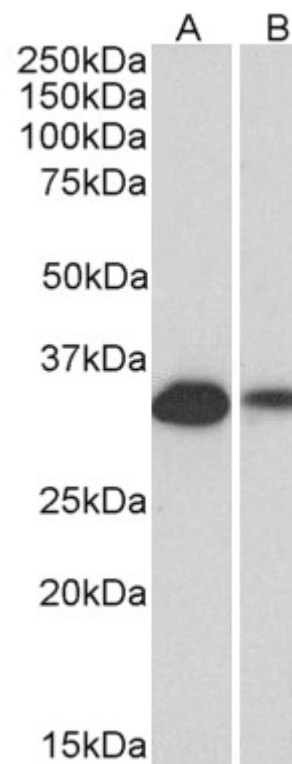
Western blot: Approx 35kDa band observed in lysates of Human Lymph Node and of cell line Daudi (calculated MW of 33.1kDa according to NP_068769.2). Recommended concentration: 0.1-0.3µg/ml. Primary incubation was 1 hour.

IHC: Paraffin embedded Human Tonsil. Recommended concentration: 6-7µg/ml.

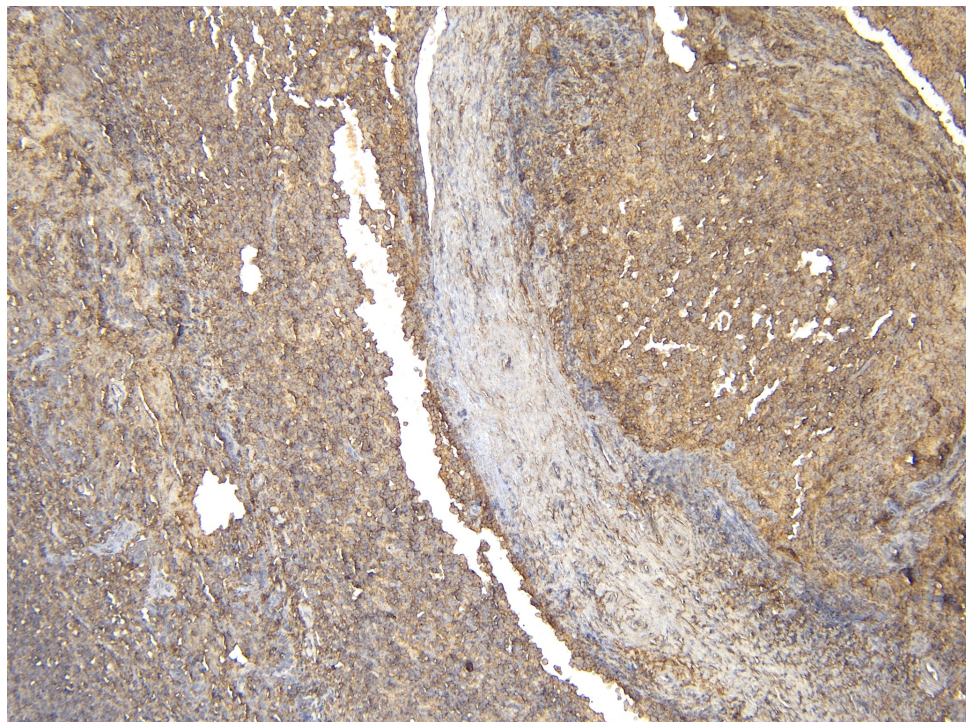
Species Reactivity

Tested: Human

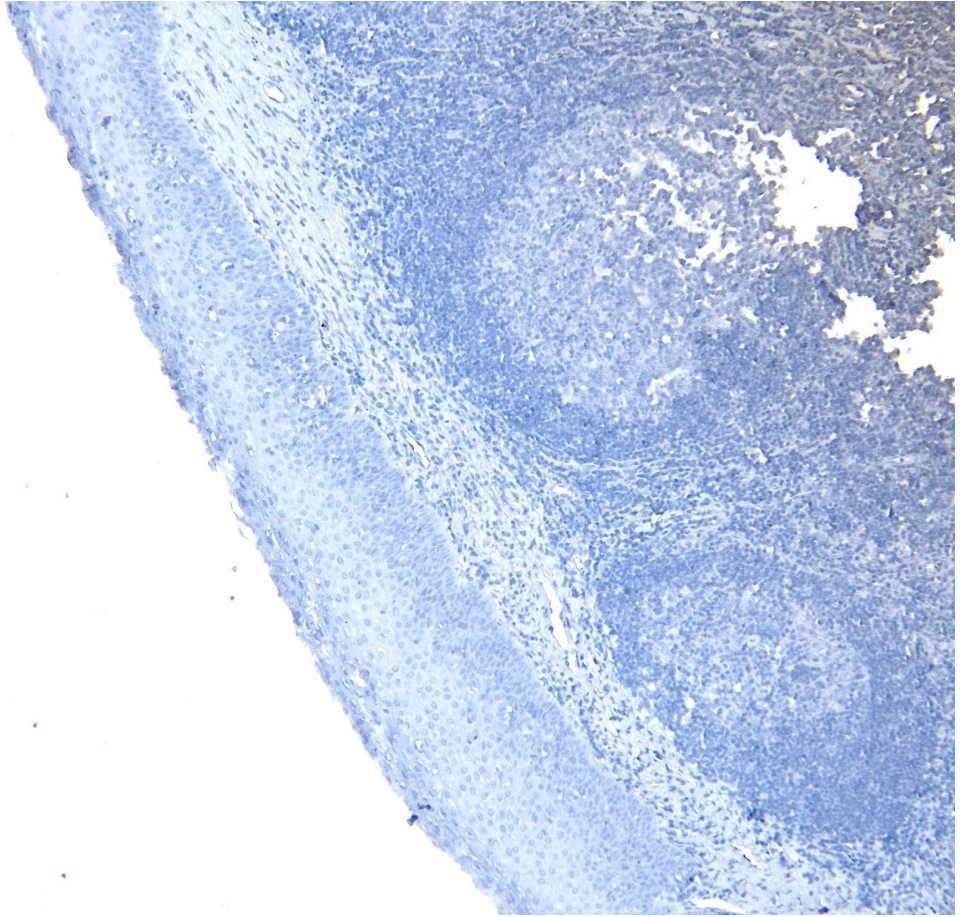
Expected from sequence similarity: Human



EB05140 (0.1µg/ml) staining of Lysate of Daudi (A) cell line and Human Lymph node (B) lysate (35µg protein in RIPA buffer). Detected by chemiluminescence.



EB05140 (6µg/ml) staining of paraffin embedded Human Tonsil. Heat induced antigen retrieval with citrate buffer pH 6, HRP-staining.



EB05140 Negative Control showing staining of paraffin embedded Human Tonsil, with no primary antibody.