



UK Office

Everest Biotech Ltd

Cherwell Innovation Centre
77 Heyford Park
Upper Heyford
Oxfordshire
OX25 5HD
UK

Enquiries:

info@everestbiotech.com

Sales:

sales@everestbiotech.com

Tech support:

support@everestbiotech.com

Tel: +44 (0)1869 238326

Fax: +44 (0)1869 238327

US Office

Everest Biotech c/o Abcore

405 Maple Street, Suite A106
Ramona,
CA 92065
USA

Inquiries:

info@everestbiotech.com

Sales:

usasales@everestbiotech.com

Tech support:

support@everestbiotech.com

Tel: 888-320-4628 (toll-free)

Fax: 888-841-9041

www.everestbiotech.com

**Research Use Only. Not for
diagnostic or therapeutic use.**

EB12536 - Goat Anti-CD27 (aa161-175) Antibody

Size: 100µg specific antibody in 200µl



Target Protein

Principal Names: CD27, CD27 molecule, S152, S152. LPFS2, T14, TNFRSF7, Tp55, CD27 antigen, CD27L receptor, T cell activation antigen S152, T-cell activation antigen CD27, tumor necrosis factor receptor superfamily, member 7

Official Symbol: CD27

Accession Number(s): NP_001233.1

Human GeneID(s): [939](#)

Immunogen

Peptide with sequence C-QLADFRQLPARTLS, from the internal region of the protein sequence according to NP_001233.1.

Please note the [peptide](#) is available for sale.

Purification and Storage

Purified from goat serum by ammonium sulphate precipitation followed by antigen affinity chromatography using the immunizing peptide.

Supplied at 0.5 mg/ml in Tris saline, 0.02% sodium azide, pH7.3 with 0.5% bovine serum albumin.

Aliquot and store at -20°C. Minimize freezing and thawing.

Applications Tested

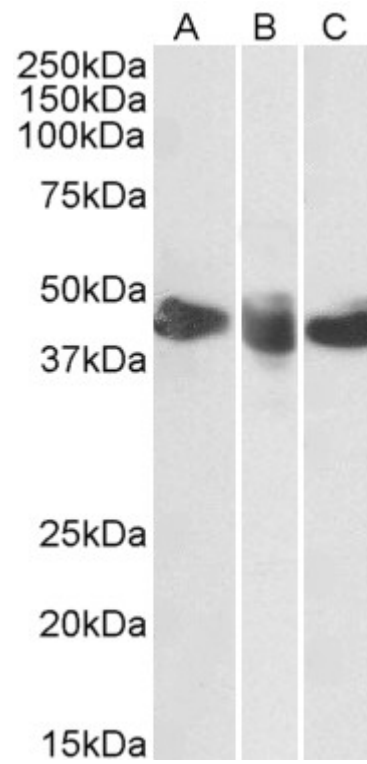
Peptide ELISA: antibody detection limit dilution 1:128000.

Western blot: Approx 45kDa band observed in Human Spleen, Tonsil and Thymus lysates (calculated MW of 29.2kDa according to NP_001233.1). The observed molecular weight corresponds to the glycosylated form. Recommended concentration: 0.3-1µg/ml.

Species Reactivity

Tested: Human

Expected from sequence similarity: Human



EB12536 (0.3 μ g/ml) staining of Human Spleen (A), Tonsil (B) and Thymus (C) lysates (35 μ g protein in RIPA buffer). Primary incubation was 1 hour. Detected by chemiluminescence.