



UK Office

Everest Biotech Ltd

Cherwell Innovation Centre
77 Heyford Park
Upper Heyford
Oxfordshire
OX25 5HD
UK

Enquiries:

info@everestbiotech.com

Sales:

sales@everestbiotech.com

Tech support:

support@everestbiotech.com

Tel: +44 (0)1869 238326

Fax: +44 (0)1869 238327

US Office

Everest Biotech c/o Abcore

405 Maple Street, Suite A106
Ramona,
CA 92065
USA

Inquiries:

info@everestbiotech.com

Sales:

usasales@everestbiotech.com

Tech support:

support@everestbiotech.com

Tel: 888-320-4628 (toll-free)

Fax: 888-841-9041

www.everestbiotech.com

**Research Use Only. Not for
diagnostic or therapeutic use.**

EB06621-B - Goat Anti-CD274 / PD-L1, Biotinylated Antibody

Size: 100µg specific antibody in 200µl



Target Protein

Principal Names: CD274, CD274 molecule, B7-H, B7H1, PD-L1, PDCD1L1, PDCD1LG1, PDL1, B7 homolog 1, CD274 antigen, PDCD1 ligand 1

Official Symbol: CD274

Accession Number(s): NP_054862.1; NP_001254635.1

Human GeneID(s): [29126](#)

Important Comments: This antibody is expected to recognize reported isoforms a and b (NP_054862.1; NP_001254635.1) only.

Immunogen

Peptide with sequence CKKQSDTHLEET., from the C Terminus of the protein sequence according to NP_054862.1; NP_001254635.1.

Please note the [peptide](#) is available for sale.

Purification and Storage

Purified from goat serum by ammonium sulphate precipitation followed by antigen affinity chromatography using the immunizing peptide.

Supplied at 0.5 mg/ml in Tris saline, 0.02% sodium azide, pH7.3 with 0.5% bovine serum albumin.

Aliquot and store at -20°C. Minimize freezing and thawing.

Applications Tested

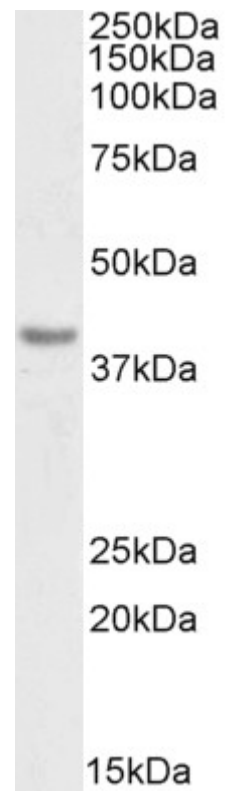
Peptide ELISA: antibody detection limit dilution 1:128000.

Western blot: Approx 40kDa band observed in Human Heart lysates (calculated MW of 33.3kDa according to NP_054862.1). See non-biotinylated parental product's datasheet for further QC data. Recommended concentration: 0.3-1µg/ml.

Species Reactivity

Tested: Human

Expected from sequence similarity: Human



Biotinylated EB06621 (0.3 μ g/ml) staining of Human Heart lysate (35 μ g protein in RIPA buffer), exactly mirroring its parental non-biotinylated product. Primary incubation was 1 hour. Detected by chemiluminescence, using streptavidin-HRP and using NAP blocker as a substitute for skimmed milk.