



## UK Office

### Everest Biotech Ltd

Cherwell Innovation Centre  
77 Heyford Park  
Upper Heyford  
Oxfordshire  
OX25 5HD  
UK

Enquiries:

[info@everestbiotech.com](mailto:info@everestbiotech.com)

Sales:

[sales@everestbiotech.com](mailto:sales@everestbiotech.com)

Tech support:

[support@everestbiotech.com](mailto:support@everestbiotech.com)

Tel: +44 (0)1869 238326

Fax: +44 (0)1869 238327

## US Office

### Everest Biotech c/o Abcore

405 Maple Street, Suite A106  
Ramona,  
CA 92065  
USA

Inquiries:

[info@everestbiotech.com](mailto:info@everestbiotech.com)

Sales:

[usasales@everestbiotech.com](mailto:usasales@everestbiotech.com)

Tech support:

[support@everestbiotech.com](mailto:support@everestbiotech.com)

Tel: 888-320-4628 (toll-free)

Fax: 888-841-9041

[www.everestbiotech.com](http://www.everestbiotech.com)

**Research Use Only. Not for  
diagnostic or therapeutic use.**

## EB10740 - Goat Anti-CD28 Antibody

Size: 100µg specific antibody in 200µl



### Target Protein

**Principal Names:** CD28, CD28 molecule, MGC138290, Tp44, CD28 antigen, CD28 antigen (Tp44), T-cell-specific surface glycoprotein

**Official Symbol:** CD28

**Accession Number(s):** NP\_006130.1

**Human GeneID(s):** [940](#)

**Important Comments:** The immunizing peptide corresponds to a part of the extracellular domain.

### Immunogen

Peptide with sequence SQQLQVYSKTGFNCD, from the internal region of the protein sequence according to NP\_006130.1.

Please note the [peptide](#) is available for sale.

### Purification and Storage

Purified from goat serum by ammonium sulphate precipitation followed by antigen affinity chromatography using the immunizing peptide.

Supplied at 0.5 mg/ml in Tris saline, 0.02% sodium azide, pH7.3 with 0.5% bovine serum albumin.

Aliquot and store at -20°C. Minimize freezing and thawing.

### Applications Tested

**Peptide ELISA:** antibody detection limit dilution 1:64000.

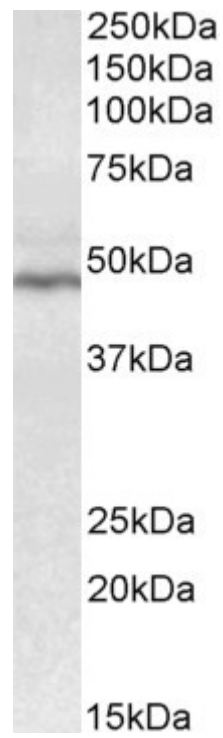
**Western blot:** Approx 48kDa band observed in Human Lymph Node and Tonsil lysates (calculated MW of 25.1kDa according to NP\_006130.1). The observed molecular weight corresponds to the glycosylated form. Recommended concentration: 0.3-1µg/ml. Primary incubation was 1 hour.

**IHC:** In paraffin embedded Human Lymph Node shows membrane staining in the paracortex. Recommended concentration: 1-2µg/ml.

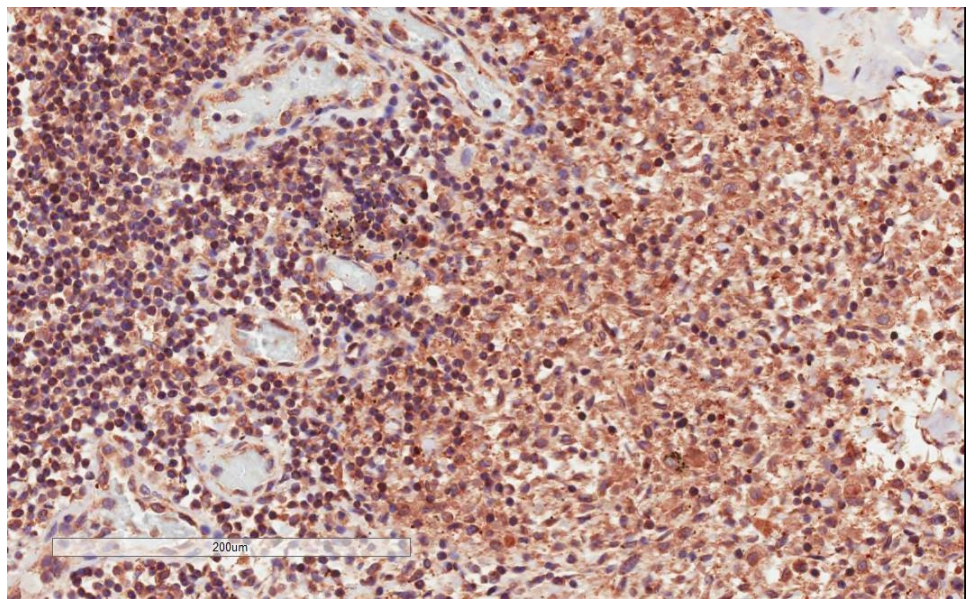
### Species Reactivity

**Tested:** Human

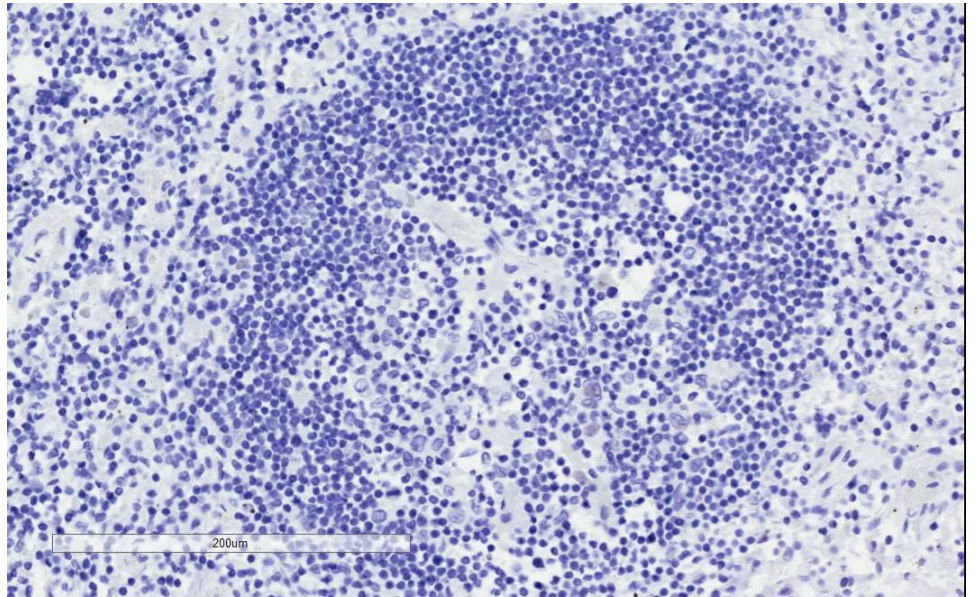
**Expected from sequence similarity:** Human



EB10740 (0.3 $\mu$ g/ml) staining of Human Tonsil lysate (35 $\mu$ g protein in RIPA buffer). Detected by chemiluminescence.



EB010740 (2 $\mu$ g/ml) staining of paraffin embedded Human Lymph Node. Microwaved antigen retrieval with citrate buffer Ph 6, HRP-staining.



EB10740 Negative Control showing staining of paraffin embedded Human Lymph Node, with no primary antibody.