



UK Office

Everest Biotech Ltd

Cherwell Innovation Centre
77 Heyford Park
Upper Heyford
Oxfordshire
OX25 5HD
UK

Enquiries:

info@everestbiotech.com

Sales:

sales@everestbiotech.com

Tech support:

support@everestbiotech.com

Tel: +44 (0)1869 238326

Fax: +44 (0)1869 238327

US Office

Everest Biotech c/o Abcore

405 Maple Street, Suite A106
Ramona,
CA 92065
USA

Inquiries:

info@everestbiotech.com

Sales:

usasales@everestbiotech.com

Tech support:

support@everestbiotech.com

Tel: 888-320-4628 (toll-free)

Fax: 888-841-9041

www.everestbiotech.com

**Research Use Only. Not for
diagnostic or therapeutic use.**

EB06414 - Goat Anti-CD2BP2 (N Terminus) Antibody

Size: 100µg specific antibody in 200µl



Target Protein

Principal Names: CD2BP2, FWP010, LIN1, Snu40, CD2 antigen (cytoplasmic tail) binding protein 2, CD2 (cytoplasmic tail) binding protein 2, CD2 antigen (cytoplasmic tail)-binding protein 2, U5-52K, CD2 binding protein 2, CD2 cytoplasmic domain binding protein 2, U5 snRNP 52K protein

Official Symbol: CD2BP2

Accession Number(s): NP_006101.1

Human GeneID(s): [10421](#)

Immunogen

Peptide with sequence PKRKVTFQG VGDE-C, from the N Terminus of the protein sequence according to NP_006101.1.

Please note the [peptide](#) is available for sale.

Purification and Storage

Purified from goat serum by ammonium sulphate precipitation followed by antigen affinity chromatography using the immunizing peptide.

Supplied at 0.5 mg/ml in Tris saline, 0.02% sodium azide, pH7.3 with 0.5% bovine serum albumin.

Aliquot and store at -20°C. Minimize freezing and thawing.

Applications Tested

Peptide ELISA: antibody detection limit dilution 1:32000.

Western blot: Approx 50kDa band observed in Human Lymph Node, Thymus and Tonsil lysates (calculated MW of 37.6kDa according to NP_006101.1). The observed molecular weight corresponds to earlier findings in literature with different antibodies (Nishizawa et al, Proc Natl Acad Sci U S A. 1998 Dec 8;95(25):14897-902). Recommended concentration: 0.3-1.0µg/ml.

IHC: In paraffin embedded Human Spleen shows nucleolar staining in select splenocytes. Recommended concentration: 5-10µg/ml.

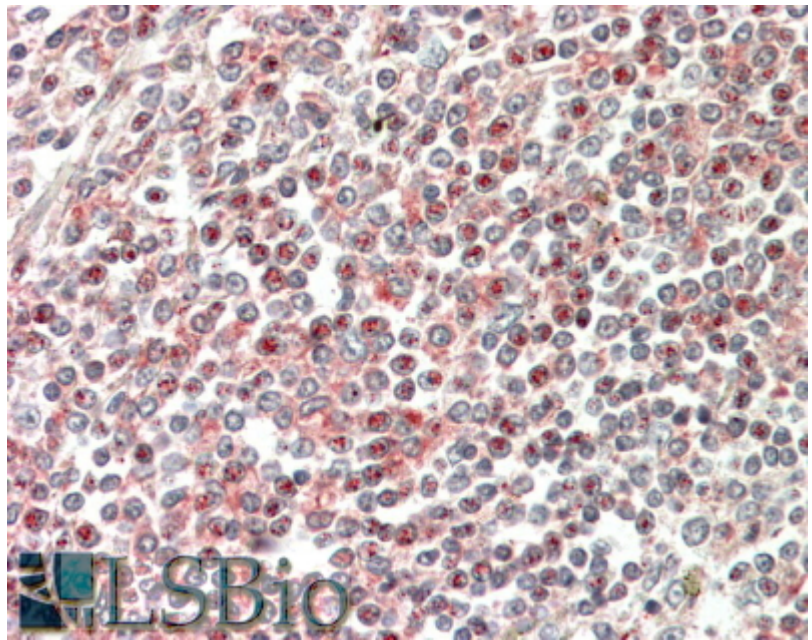
Species Reactivity

Tested: Human

Expected from sequence similarity: Human, Mouse, Rat, Dog, Cow



EB06414 (0.3µg/ml) staining of Human Thymus lysate (35µg protein in RIPA buffer). Primary incubation was 1 hour. Detected by chemiluminescence.



EB06414 (5µg/ml) staining of paraffin embedded Human Spleen. Steamed antigen retrieval with citrate buffer pH 6, AP-staining.