



UK Office

Everest Biotech Ltd

Cherwell Innovation Centre
77 Heyford Park
Upper Heyford
Oxfordshire
OX25 5HD
UK

Enquiries:

info@everestbiotech.com

Sales:

sales@everestbiotech.com

Tech support:

support@everestbiotech.com

Tel: +44 (0)1869 238326

Fax: +44 (0)1869 238327

US Office

Everest Biotech c/o Abcore

405 Maple Street, Suite A106
Ramona,
CA 92065
USA

Inquiries:

info@everestbiotech.com

Sales:

usasales@everestbiotech.com

Tech support:

support@everestbiotech.com

Tel: 888-320-4628 (toll-free)

Fax: 888-841-9041

www.everestbiotech.com

**Research Use Only. Not for
diagnostic or therapeutic use.**

EB12597 - Goat Anti-CD4 Antibody

Size: 100µg specific antibody in 200µl



Target Protein

Principal Names: CD4, CD4 molecule, CD4mut, CD4 antigen (p55), CD4 receptor, T-cell surface antigen T4/Leu-3, T-cell surface glycoprotein CD4

Official Symbol: CD4

Accession Number(s): NP_000607.1; NP_001181943.1

Human GeneID(s): [920](#)

Important Comments: This antibody is expected to recognize isoform 1 (NP_000607.1) and isoform 2 (NP_001181943.1).

Immunogen

Peptide with sequence C-KNKEVSVKRVTDQDPK, from the internal region of the protein sequence according to NP_000607.1; NP_001181943.1.

Please note the [peptide](#) is available for sale.

Purification and Storage

Purified from goat serum by ammonium sulphate precipitation followed by antigen affinity chromatography using the immunizing peptide.

Supplied at 0.5 mg/ml in Tris saline, 0.02% sodium azide, pH7.3 with 0.5% bovine serum albumin.

Aliquot and store at -20°C. Minimize freezing and thawing.

Applications Tested

Peptide ELISA: antibody detection limit dilution 1:128000.

Western blot: Approx 30kDa band observed in Human Spleen and Bone Marrow lysates (calculated MW of 31.3kDa according to NP_001181943.1). Recommended concentration: 0.3-1µg/ml. Primary incubation 1 hour at room temperature.

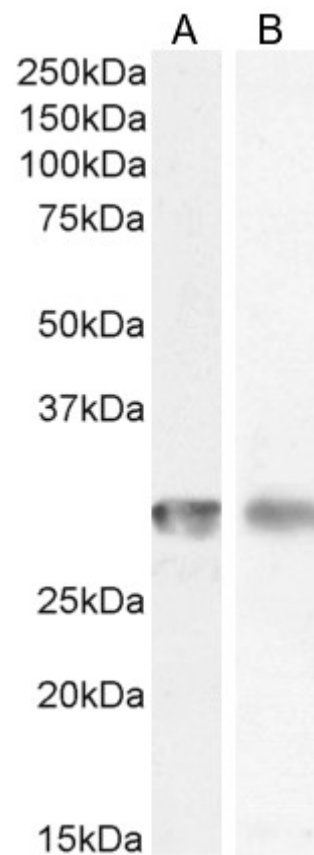
IHC: Paraffin embedded Human Tonsil. Recommended concentration: 4µg/ml.

Flow Cytometry: Flow cytometric analysis of Jurkat cells. Recommended concentration: 10ug/ml.

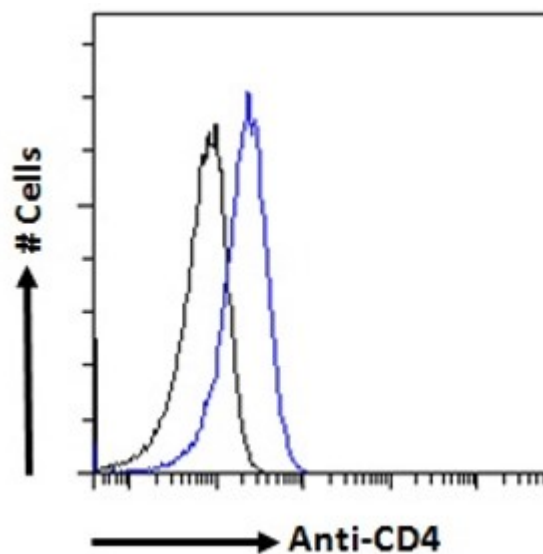
Species Reactivity

Tested: Human

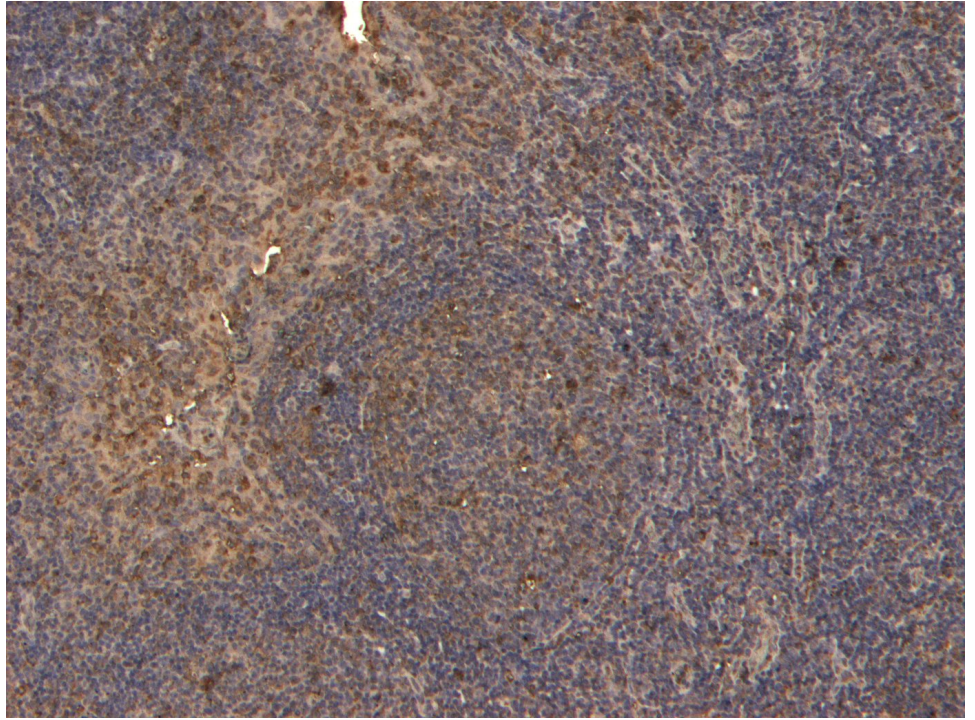
Expected from sequence similarity: Human



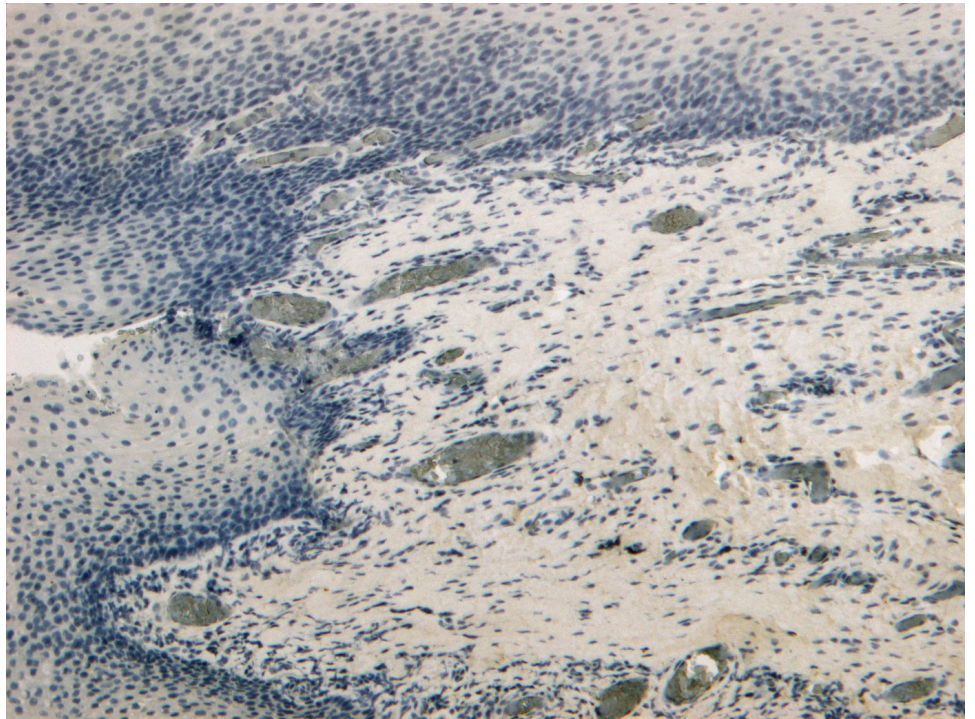
EB12597 (1 μ g/ml) staining of Human Spleen (A) and (0.5 μ g/ml) Bone Marrow (B) lysate (35 μ g protein in RIPA buffer). Detected by chemiluminescence.



EB12597 Flow cytometric analysis of paraformaldehyde fixed Jurkat cells (blue line), permeabilized with 0.5% Triton. Primary incubation 1hr (10 μ g/ml) followed by Alexa Fluor 488 secondary antibody (1 μ g/ml). IgG control: Unimmunized goat IgG (black line) followed by Alexa Fluor 488 secondary antibody.



EB12597 (4µg/ml) staining of paraffin embedded Human Tonsil. Heat induced antigen retrieval with citrate buffer pH 6, HRP-staining.



EB12597 Negative Control showing staining of paraffin embedded Human Tonsil, with no primary antibody.