



International Office

Everest Biotech Ltd

Vector Laboratories, Inc.
6737 Mowry Ave
Newark, CA 94560
United States

Customer Service:

customerservice@vectorlabs.com

Technical Service:

technical@vectorlabs.com

Tel: +1 (800) 227-6666

www.everestbiotech.com

**Research Use Only. Not for
diagnostic or therapeutic use.**

EB12502 - Goat Anti-CD47 (aa78-89) Antibody

Size: 100µg specific antibody in 200µl



Target Protein

Principal Names: CD47, CD47 molecule, IAP, MER6, OA3, CD47 antigen (Rh-related antigen, integrin-associated signal transducer), CD47 glycoprotein, Rh-related antigen, antigen identified by monoclonal antibody 1D8, antigenic surface determinant protein OA3, integrin associ

Official Symbol: CD47

Accession Number(s): NP_001768.1; NP_942088.1; NP_001369235.1

Human GeneID(s): [961](#)

Important Comments: This antibody is expected to recognize all reported isoforms NP_001768.1; NP_942088.1; NP_001369235.1

Immunogen

Peptide with sequence C-PTDFSSAKIEVS, from the internal region of the protein sequence according to NP_001768.1; NP_942088.1; NP_001369235.1.

Please note the [peptide](#) is available for sale.

Purification and Storage

Purified from goat serum by ammonium sulphate precipitation followed by antigen affinity chromatography using the immunizing peptide.

Supplied at 0.5 mg/ml in Tris saline, 0.02% sodium azide, pH7.3 with 0.5% bovine serum albumin.

Aliquot and store at -20°C. Minimize freezing and thawing.

Applications Tested

Peptide ELISA: antibody detection limit dilution 1:128000.

Western blot: Approx. 48kDa band observed in Human Tonsil lysates (calculated MW of 35.2kDa according to NP_001768.1). This molecular weight is observed by other commercial sources, and was blocked by incubation with the immunizing peptide. Recommended concentration: 0.5-2ug/ml. Primary incubation 1 hour at room temperature.

Immunofluorescence: Strong expression of the protein seen in the membranes and cytoplasm of A431 and THP-1 cells. Recommended concentration: 10µg/ml.

Flow Cytometry: Flow cytometric analysis of THP-1 cells. Recommended concentration: 10ug/ml.

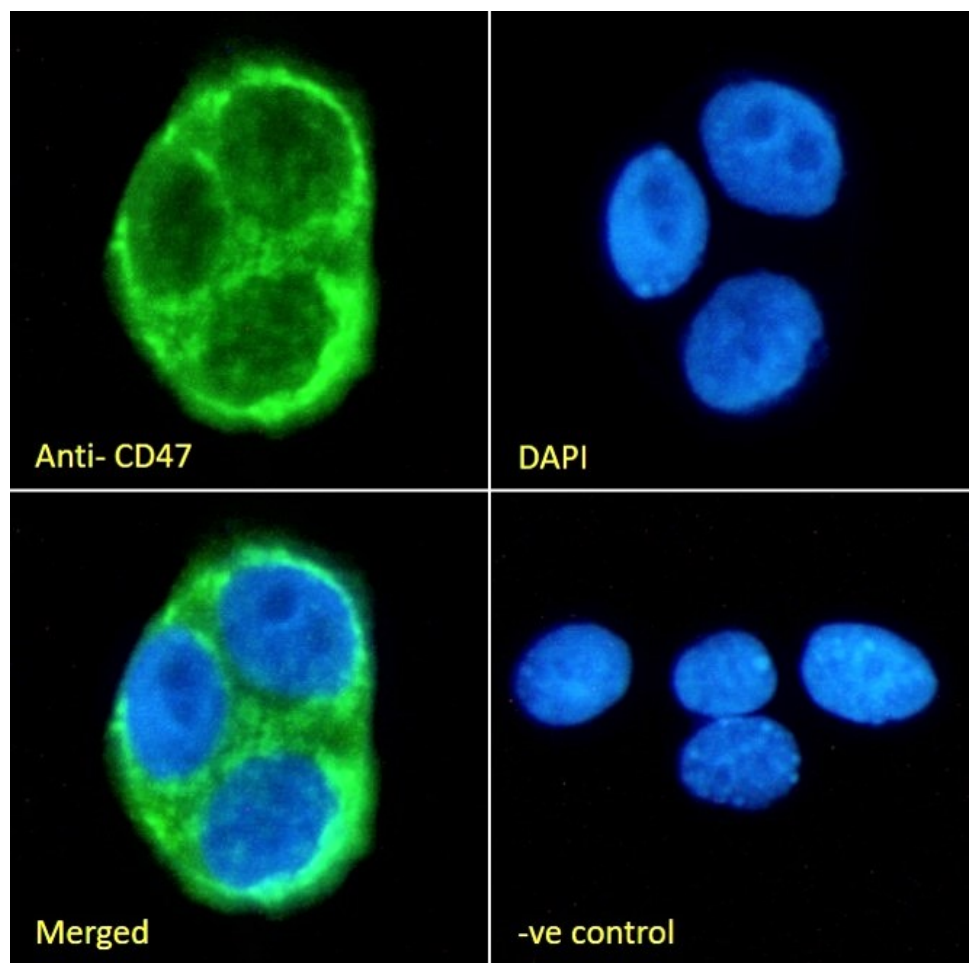
Species Reactivity

Tested: Human

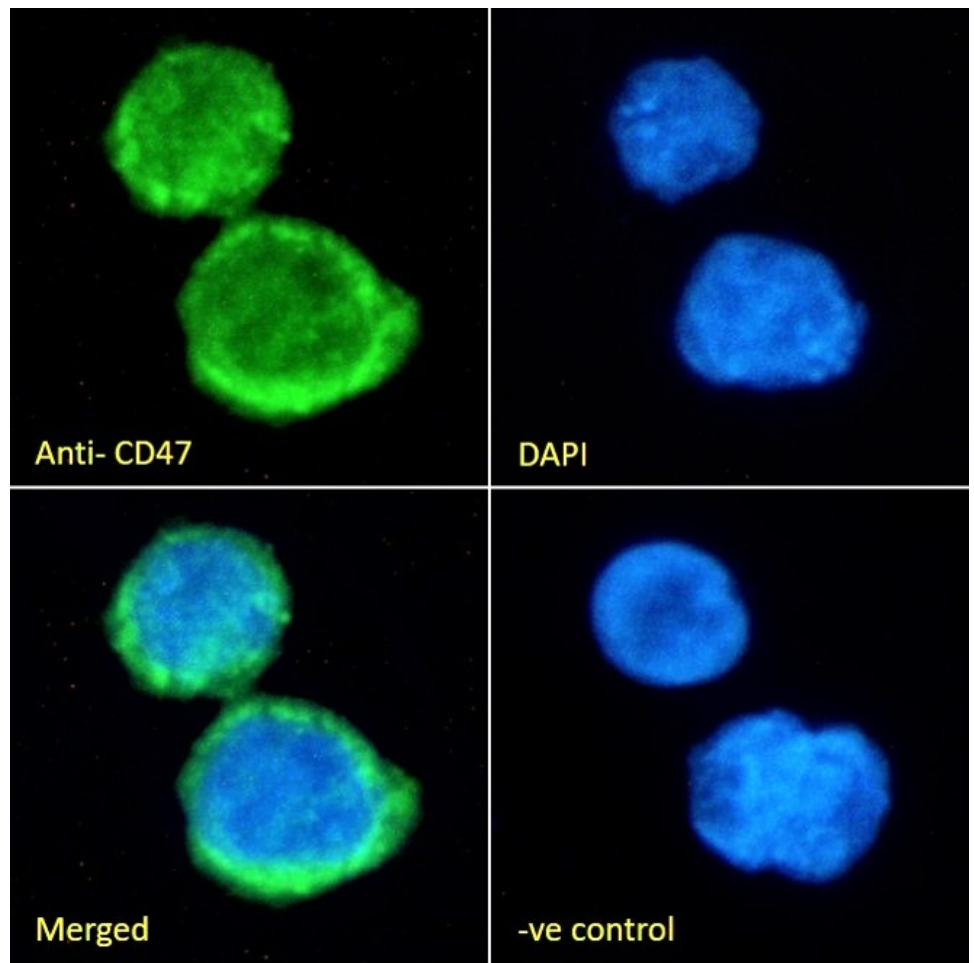
Expected from sequence similarity: Human



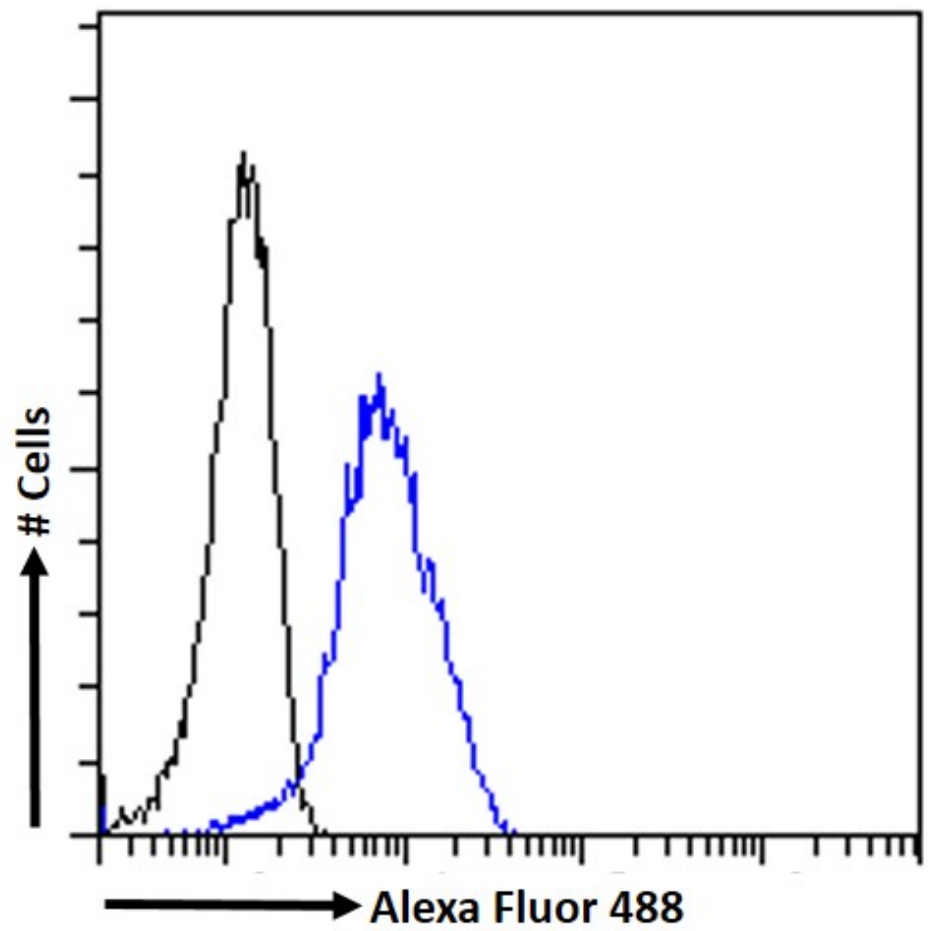
EB12502 (1 μ g/ml) staining of Human Tonsil (A) + peptide (B) lysate (RIPA buffer, (35 μ g protein in RIPA buffer).
Detected by chemiluminescence.



EB12502 Immunofluorescence analysis of paraformaldehyde fixed A431 cells, permeabilized with 0.15% Triton. Primary incubation 1hr (10ug/ml) followed by Alexa Fluor 488 secondary antibody (2ug/ml), showing membrane and cytoplasmic staining. The nuclear stain is DAPI (blue). Negative control: Unimmunized goat IgG (10ug/ml) followed by Alexa Fluor 488 secondary antibody (2ug/ml).



EB12502 Immunofluorescence analysis of paraformaldehyde fixed THP-1 cells immobilized on Shifix™ coverslip, permeabilized with 0.15% Triton. Primary incubation 1hr (10ug/ml) followed by Alexa Fluor 488 secondary antibody (2ug/ml), showing membrane and cytoplasmic staining. The nuclear stain is DAPI (blue). Negative control: Unimmunized goat IgG (10ug/ml) followed by Alexa Fluor 488 secondary antibody (2ug/ml).



EB12502 Flow cytometric analysis of paraformaldehyde fixed THP-1 cells (blue line) permeabilized with 0.5% Triton. Primary incubation 1hr (10ug/ml) followed by Alexa Fluor 488® conjugated secondary antibody (1ug/ml). IgG control: Unimmunized goat IgG (black line) followed by Alexa Fluor 488 secondary antibody.