



UK Office

Everest Biotech Ltd

Cherwell Innovation Centre
77 Heyford Park
Upper Heyford
Oxfordshire
OX25 5HD
UK

Enquiries:

info@everestbiotech.com

Sales:

sales@everestbiotech.com

Tech support:

support@everestbiotech.com

Tel: +44 (0)1869 238326

www.everestbiotech.com

**Research Use Only. Not for
diagnostic or therapeutic use.**

EB12699 - Goat Anti-CD68 Antibody

Size: 100µg specific antibody in 200µl



Target Protein

Principal Names: CD68, CD68 molecule, GP110, LAMP4, SCARD1, CD68 antigen, macrophage antigen CD68, macrosialin, scavenger receptor class D, member 1

Official Symbol: CD68

Accession Number(s): NP_001242.2; NP_001035148.1

Human GeneID(s): [968](#)

Important Comments: This antibody is expected to recognize both reported isoforms (NP_001242.2; NP_001035148.1).

Immunogen

Peptide with sequence PNKTKVQGSCEGAH, from the internal region of the protein sequence according to NP_001242.2; NP_001035148.1.

Please note the [peptide](#) is available for sale.

Purification and Storage

Purified from goat serum by ammonium sulphate precipitation followed by antigen affinity chromatography using the immunizing peptide.

Supplied at 0.5 mg/ml in Tris saline, 0.02% sodium azide, pH7.3 with 0.5% bovine serum albumin.

Aliquot and store at -20°C. Minimize freezing and thawing.

Applications Tested

Peptide ELISA: antibody detection limit dilution 1:128000.

Western blot: Approx. 100-110kDa band observed in lysates of cell line U937 and in preliminary testing of THP-1 cell lysate (calculated MW of 37.4kDa according to NP_001242.2). The observed molecular weight is routinely reported, and corresponds to the glycosylated form. Recommended concentration: 1-3µg/ml. Primary incubation 1 hour at room temperature. **Positive Control:** A batch specific positive control lysate is available for this product. Please contact Sales@everestbiotech.com for availability.

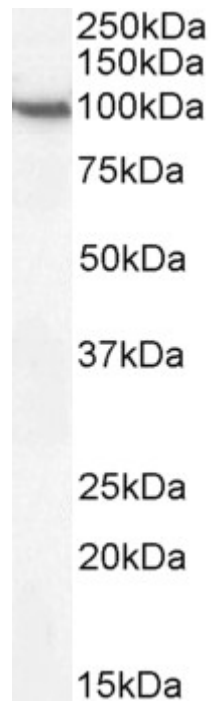
IHC: Paraffin embedded Human Spleen. Recommended concentration: 5-6µg/ml.

Flow Cytometry: Flow cytometric analysis of U937 cells. Recommended concentration: 10ug/ml.

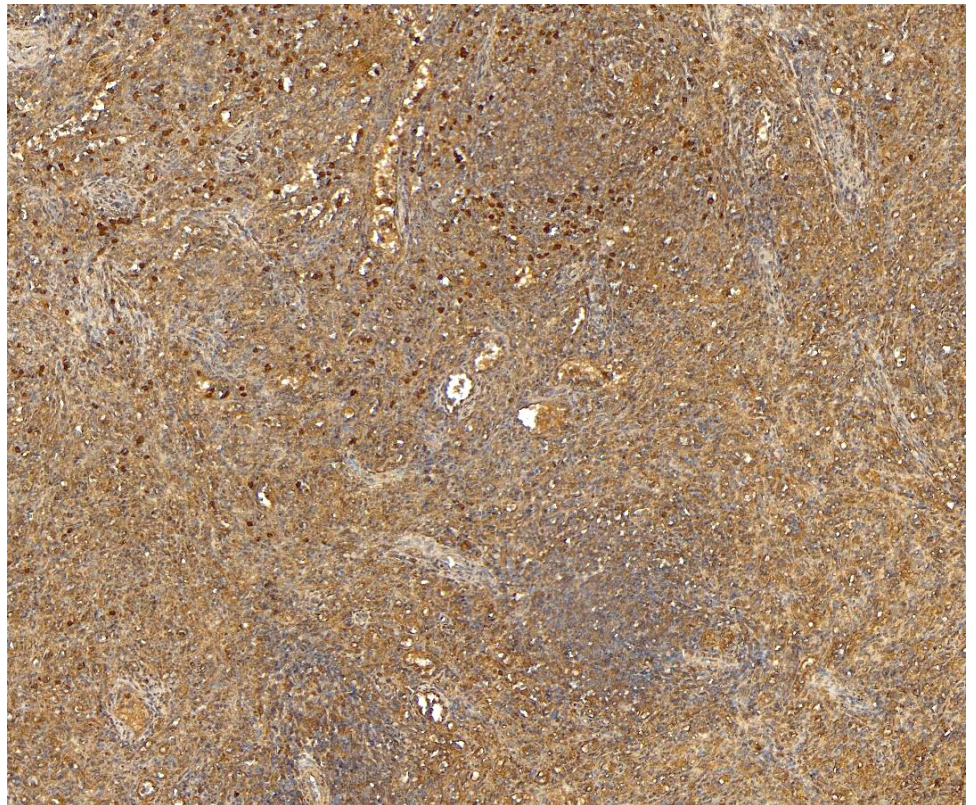
Species Reactivity

Tested: Human

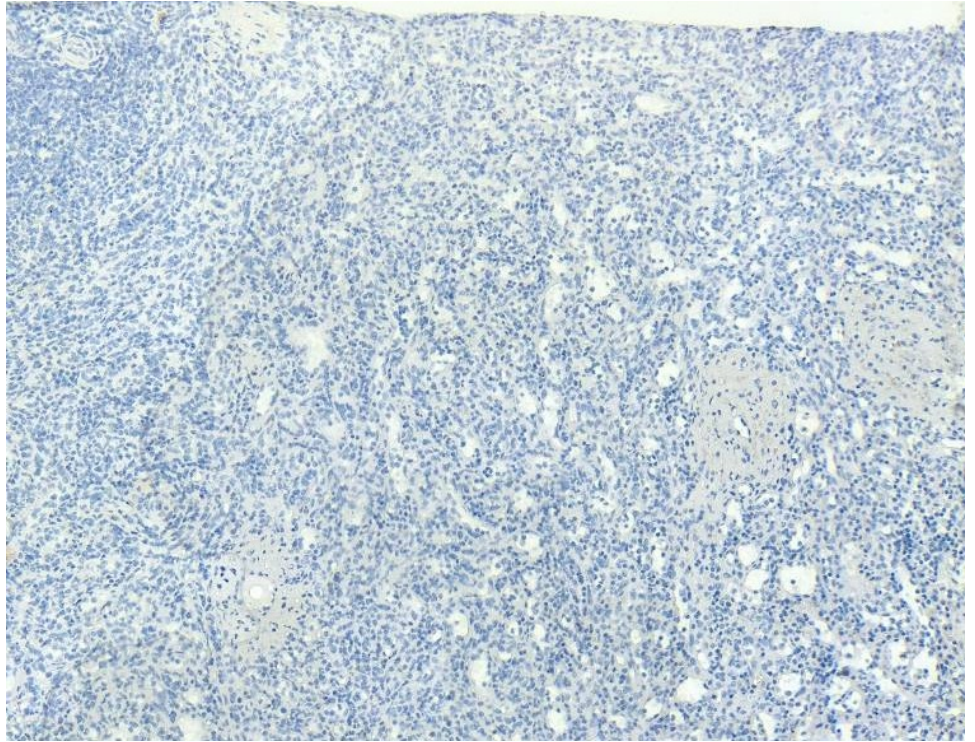
Expected from sequence similarity: Human



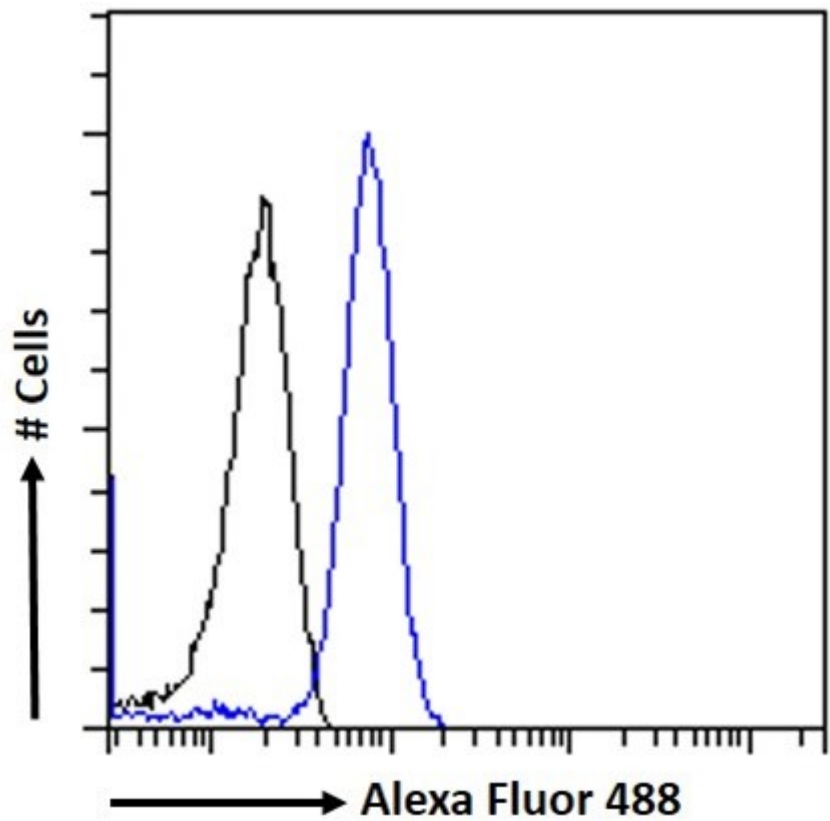
EB12699 (2 μ g/ml) staining of U937 cell lysate (35 μ g protein in RIPA buffer). Detected by chemiluminescence.



EB12699 (5 μ g/ml) staining of paraffin embedded Human Spleen. Heat induced antigen retrieval with citrate buffer pH 6, HRP-staining.



EB12699 Negative Control showing staining of paraffin embedded Human Spleen, with no primary antibody.



EB12699 Flow cytometric analysis of paraformaldehyde fixed U937 cells (blue line), permeabilized with 0.5% Triton. Primary incubation 1hr (10ug/ml) followed by Alexa Fluor 488 secondary antibody (1ug/ml). IgG control: Unimmunized goat IgG (black line) followed by Alexa Fluor 488 secondary antibody.