



UK Office

Everest Biotech Ltd

Cherwell Innovation Centre
77 Heyford Park
Upper Heyford
Oxfordshire
OX25 5HD
UK

Enquiries:

info@everestbiotech.com

Sales:

sales@everestbiotech.com

Tech support:

support@everestbiotech.com

Tel: +44 (0)1869 238326

Fax: +44 (0)1869 238327

US Office

Everest Biotech c/o Abcore

405 Maple Street, Suite A106
Ramona,
CA 92065
USA

Inquiries:

info@everestbiotech.com

Sales:

usasales@everestbiotech.com

Tech support:

support@everestbiotech.com

Tel: 888-320-4628 (toll-free)

Fax: 888-841-9041

www.everestbiotech.com

**Research Use Only. Not for
diagnostic or therapeutic use.**

EB12551 - Goat Anti-CD74 (aa159-171) Antibody

Size: 100µg specific antibody in 200µl



Target Protein

Principal Names: CD74, DHLAG, HLADG, Ia-GAMMA, CD74 molecule, major histocompatibility complex, class II invariant chain, CD74 antigen, CD74 antigen (invariant polypeptide of major histocompatibility complex, class II antigen-associated), HLA-DR-gamma, Ia-associated invariant chain, MHC HLA-DR gamma chain, gamma chain of class II antigens

Official Symbol: CD74

Accession Number(s): NP_001020330.1; NP_004346.1

Human GeneID(s): [972](#)

Important Comments: This antibody is expected to recognize isoform a (NP_001020330.1) and isoform b (NP_004346.1).

Immunogen

Peptide with sequence C-KGSFPENLRHLKN, from the internal region of the protein sequence according to NP_001020330.1; NP_004346.1.

Please note the [peptide](#) is available for sale.

Purification and Storage

Purified from goat serum by ammonium sulphate precipitation followed by antigen affinity chromatography using the immunizing peptide.

Supplied at 0.5 mg/ml in Tris saline, 0.02% sodium azide, pH7.3 with 0.5% bovine serum albumin.

Aliquot and store at -20°C. Minimize freezing and thawing.

Applications Tested

Peptide ELISA: antibody detection limit dilution 1:128000.

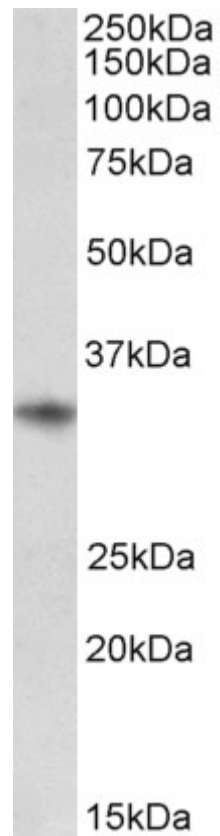
Western blot: Approx 33kDa band observed in Human Tonsil lysates (calculated MW of 33.5kDa according to NP_001020330.1). Recommended concentration: 0.01-0.03µg/ml. Primary incubation was 1 hour.

IHC: Paraffin embedded Human Spleen. Recommended concentration: 5µg/ml.

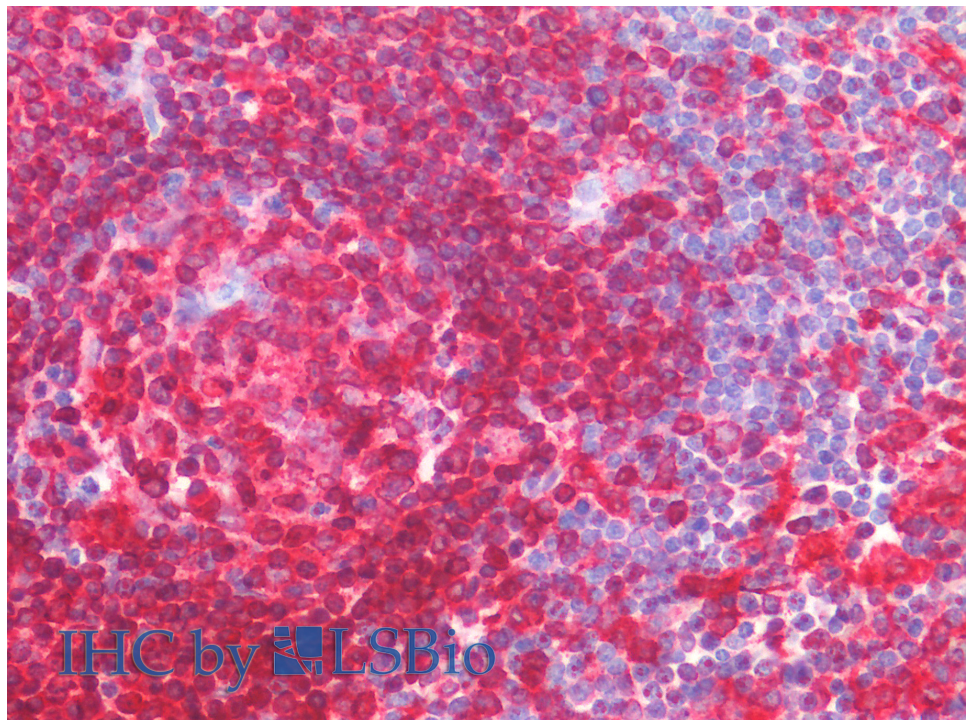
Species Reactivity

Tested: Human

Expected from sequence similarity: Human



EB12551 (0.01µg/ml) staining of Human Tonsil lysate (35µg protein in RIPA buffer). Detected by chemiluminescence.



EB12551 (5µg/ml) staining of paraffin embedded Human Spleen. Steamed antigen retrieval with citrate buffer Ph 6, AP-staining.