



International Office

Everest Biotech Ltd

Vector Laboratories, Inc.
6737 Mowry Ave
Newark, CA 94560
United States

Customer Service:

customerservice@vectorlabs.com

Technical Service:

technical@vectorlabs.com

Tel: +1 (800) 227-6666

www.everestbiotech.com

**Research Use Only. Not for
diagnostic or therapeutic use.**

EB10739 - Goat Anti-CD86 / B7-2 (aa 73-87) Antibody

Size: 100µg specific antibody in 200µl



Target Protein

Principal Names: CD86, CD86 molecule, B7-2, B70, CD28LG2, LAB72, MGC34413, B-lymphocyte activation antigen B7-2, B7-2 antigen, CD86 antigen, CD86 antigen (CD28 antigen ligand 2, B7-2 antigen), CTLA-4 counter-receptor B7.2

Official Symbol: CD86

Accession Number(s): NP_787058.5; NP_008820.4; NP_795711.2

Human GeneID(s): [942](#)

Important Comments: This antibody is expected to recognize reported isoforms (NP_787058.5 (isoform 1), NP_008820.4 (isoform 2) and NP_795711.2 (isoform 3)).

Immunogen

Peptide with sequence C-EKFDSVHSKYMGRTS, from the internal region of the protein sequence according to NP_787058.5; NP_008820.4; NP_795711.2.

Please note the [peptide](#) is available for sale.

Purification and Storage

Purified from goat serum by ammonium sulphate precipitation followed by antigen affinity chromatography using the immunizing peptide.

Supplied at 0.5 mg/ml in Tris saline, 0.02% sodium azide, pH7.3 with 0.5% bovine serum albumin.

Aliquot and store at -20°C. Minimize freezing and thawing.

Applications Tested

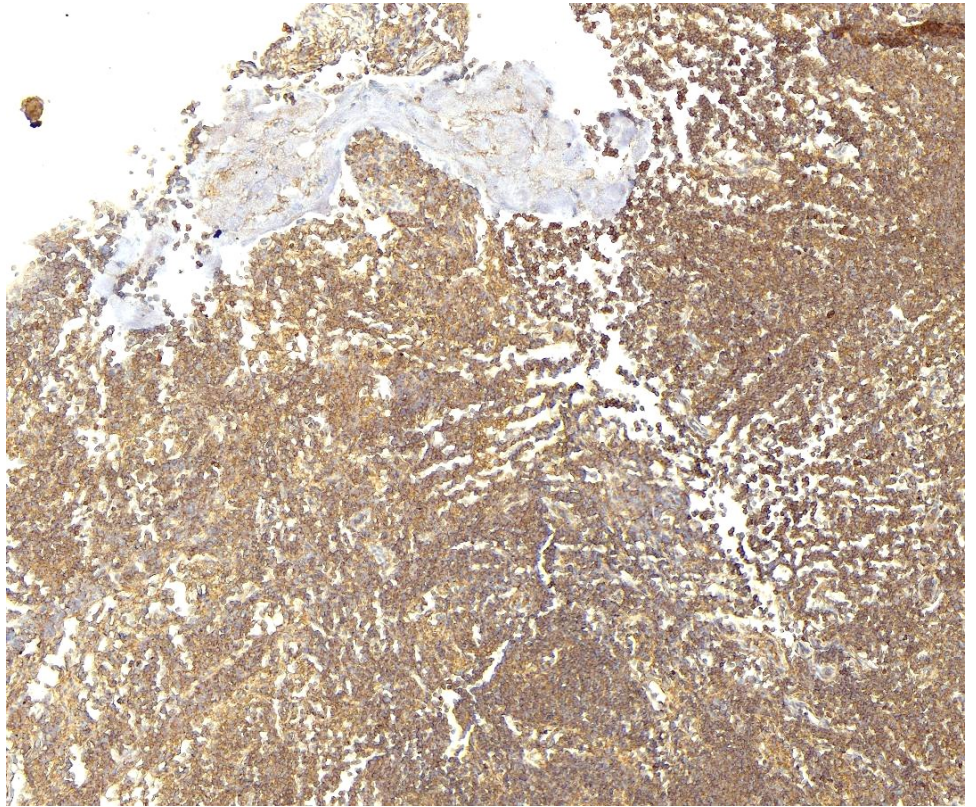
Peptide ELISA: antibody detection limit dilution 1:64000.

IHC: Paraffin embedded Human Lymph Node. Recommended concentration: 6µg/ml.

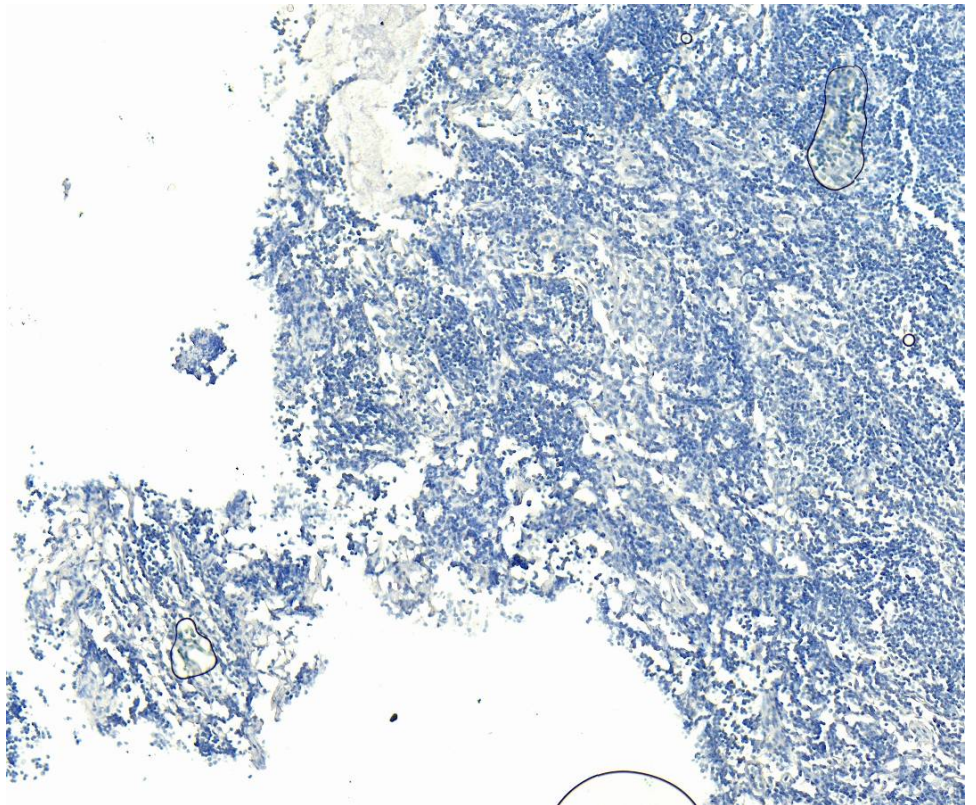
Species Reactivity

Tested: Human

Expected from sequence similarity: Human



EB10739 (6µg/ml) staining of paraffin embedded Human Lymph Node. Heat induced antigen retrieval with citrate buffer pH 6, HRP-staining.



EB10739 Negative Control showing staining of paraffin embedded Human Lymph Node, with no primary antibody.