



UK Office

Everest Biotech Ltd

Cherwell Innovation Centre
77 Heyford Park
Upper Heyford
Oxfordshire
OX25 5HD
UK

Enquiries:

info@everestbiotech.com

Sales:

sales@everestbiotech.com

Tech support:

support@everestbiotech.com

Tel: +44 (0)1869 238326

Fax: +44 (0)1869 238327

US Office

Everest Biotech c/o Abcore

405 Maple Street, Suite A106
Ramona,
CA 92065
USA

Inquiries:

info@everestbiotech.com

Sales:

usasales@everestbiotech.com

Tech support:

support@everestbiotech.com

Tel: 888-320-4628 (toll-free)

Fax: 888-841-9041

www.everestbiotech.com

**Research Use Only. Not for
diagnostic or therapeutic use.**

EB06363 - Goat Anti-Cdc42-binding kinase alpha Antibody

Size: 100µg specific antibody in 200µl



Target Protein

Principal Names: CDC42BPA, MRCK, MRCKA, PK428, FLJ23347, KIAA0451, CDC42 binding protein kinase alpha (DMPK-like), ser-thr protein kinase PK428, myotonic dystrophy kinase-related CDC42-binding protein kinase alpha, Ser-Thr protein kinase related to the myotonic dystrophy protein kinase, DKFZp686L1738, CDC42 binding protein kinase beta

Official Symbol: CDC42BPA

Accession Number(s): NP_055641.3; NP_003598.2

Human GeneID(s): [8476](#)

Non-Human GeneID(s): 226751 (mouse), 114116 (rat)

Important Comments: This antibody is expected to recognise both reported Human isoforms (NP_055641.3 and NP_003598.2).

Immunogen

Peptide with sequence SGEVRLRQLEQFI-C, from the N Terminus of the protein sequence according to NP_055641.3; NP_003598.2.

Please note the [peptide](#) is available for sale.

Purification and Storage

Purified from goat serum by ammonium sulphate precipitation followed by antigen affinity chromatography using the immunizing peptide.

Supplied at 0.5 mg/ml in Tris saline, 0.02% sodium azide, pH7.3 with 0.5% bovine serum albumin.

Aliquot and store at -20°C. Minimize freezing and thawing.

Applications Tested

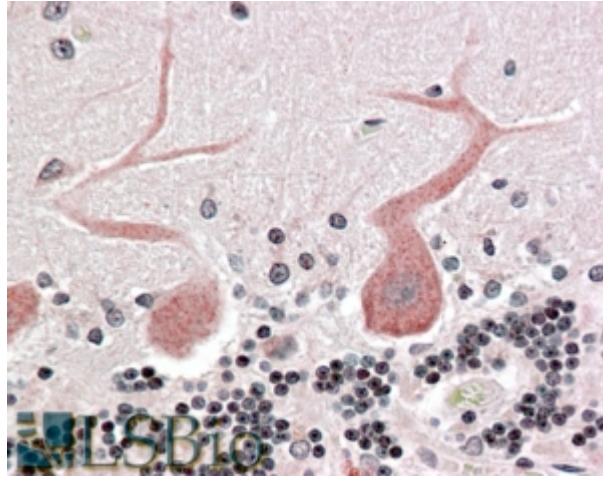
Peptide ELISA: antibody detection limit dilution 1:16000.

IHC: Paraffin embedded Human Brain (Cerebellum) and Small Intestine (submucosal plexus). Recommended concentration: 3.75µg/ml.

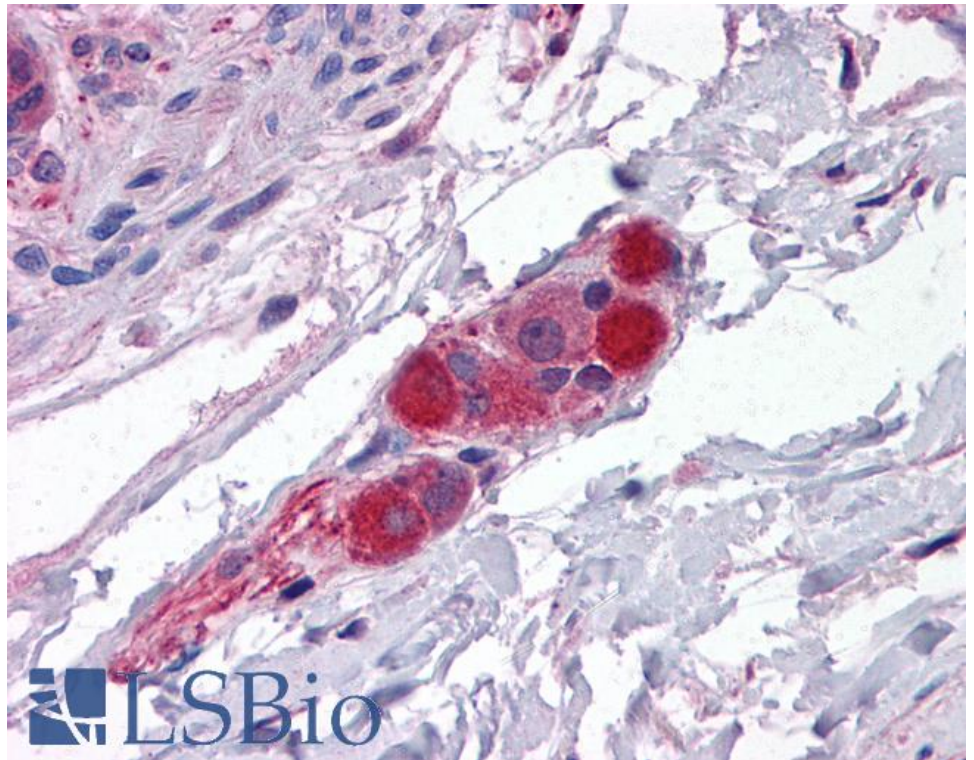
Species Reactivity

Tested: Human

Expected from sequence similarity: Human, Mouse, Rat, Dog, Cow



EB06363 (3.75µg/ml) staining of paraffin embedded Human Cerebellum. Steamed antigen retrieval with citrate buffer pH 6, AP-staining.



EB06363 (3.75µg/ml) staining of paraffin embedded Human Small Intestine. Steamed antigen retrieval with citrate buffer pH 6, AP-staining.