



## UK Office

### Everest Biotech Ltd

Cherwell Innovation Centre  
77 Heyford Park  
Upper Heyford  
Oxfordshire  
OX25 5HD  
UK

Enquiries:

[info@everestbiotech.com](mailto:info@everestbiotech.com)

Sales:

[sales@everestbiotech.com](mailto:sales@everestbiotech.com)

Tech support:

[support@everestbiotech.com](mailto:support@everestbiotech.com)

Tel: +44 (0)1869 238326

[www.everestbiotech.com](http://www.everestbiotech.com)

**Research Use Only. Not for  
diagnostic or therapeutic use.**

## EB11800 - Goat Anti-CDC48 / YDL126C Antibody

Size: 100µg specific antibody in 200µl



### Target Protein

**Principal Names:** CDC48, CDC48p, transitional endoplasmic reticulum ATPase, VCP, YDL126C, transitional endoplasmic reticulum ATPase, valosin containing protein, p97, TERA

**Official Symbol:** CDC48

**Accession Number(s):** NP\_010157.1

**Human GeneID(s):** [7415](#)

**Non-Human GeneID(s):** 269523 (mouse), 116643 (rat)

**Important Comments:** This antibody may cross react in many other species.

### Immunogen

Peptide with sequence C-HTKNMKLADDVDLE, from the internal region of the protein sequence according to NP\_010157.1.

Please note the [peptide](#) is available for sale.

### Purification and Storage

Purified from goat serum by ammonium sulphate precipitation followed by antigen affinity chromatography using the immunizing peptide.

Supplied at 0.5 mg/ml in Tris saline, 0.02% sodium azide, pH7.3 with 0.5% bovine serum albumin.

Aliquot and store at -20°C. Minimize freezing and thawing.

### Applications Tested

**Peptide ELISA:** antibody detection limit dilution 1:128000.

**Western blot:** Approx 100kDa band observed in lysates of cell line HeLa (calculated MW of 92.0kDa according to NP\_010157.1). Recommended concentration: 0.01-0.03µg/ml.

**IHC:** Paraffin embedded Human Placenta. Recommended concentration: 5µg/ml.

**Additional validation:** This antibody has been successfully used in the following paper: Sikorski et al. (2018) PMID: 30377371.

### Species Reactivity

**Tested:** Human

**Expected from sequence similarity:** Saccharomyces cerevisiae S288c; Human, Mouse, Rat, Dog, Cow

### Specific Reference

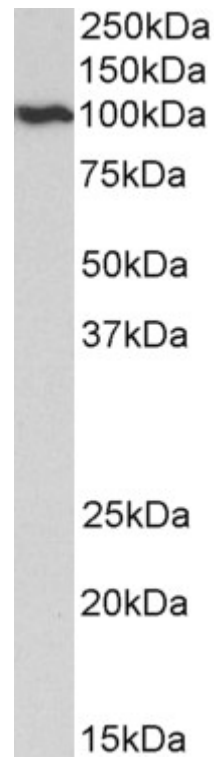
**This antibody has been successfully used in the following paper:**

Krzysztof Sikorski, Adi Mehta, Marit Inngjerdigen, Flourina Thakor, Simon Kling, Tomas Kalina, Tuula A. Nyman, Maria Ekman Stensland, Wei Zhou, Gustavo A. De Souza, Lars Holden, Jan Stuchly, Markus Templin and Fridtjof Lund-Johansen

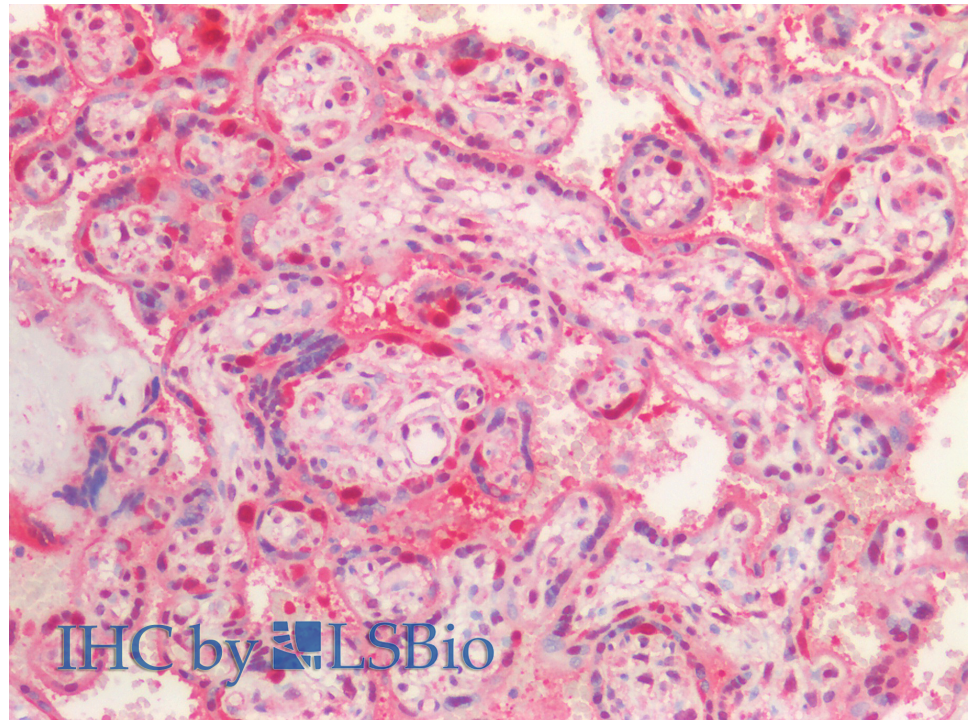
A high-throughput pipeline for validation of antibodies

Nat Methods. 2018 Nov;15(11):909-912

PMID: 30377371



EB11800 (0.01 $\mu$ g/ml) staining of HeLa lysate (35 $\mu$ g protein in RIPA buffer). Primary incubation was 1 hour. Detected by chemiluminescence.



EB11800 (5 $\mu$ g/ml) staining of paraffin embedded Human Placenta. Steamed antigen retrieval with citrate buffer pH 6, AP-staining.