



## UK Office

### Everest Biotech Ltd

Cherwell Innovation Centre  
77 Heyford Park  
Upper Heyford  
Oxfordshire  
OX25 5HD  
UK

Enquiries:

[info@everestbiotech.com](mailto:info@everestbiotech.com)

Sales:

[sales@everestbiotech.com](mailto:sales@everestbiotech.com)

Tech support:

[support@everestbiotech.com](mailto:support@everestbiotech.com)

Tel: +44 (0)1869 238326

[www.everestbiotech.com](http://www.everestbiotech.com)

**Research Use Only. Not for  
diagnostic or therapeutic use.**

## EB11799 - Goat Anti-CDC48/ VCP / YDL126C (baker's yeast, aa128-142) Antibody

Size: 100µg specific antibody in 200µl



### Target Protein

**Principal Names:** CDC48, CDC48p, YDL126C, VCP, transitional endoplasmic reticulum ATPase, valosin containing protein, p97, TERA

**Official Symbol:** CDC48

**Accession Number(s):** NP\_010157.1

**Important Comments:** This antibody may cross react in many other species.

### Immunogen

Peptide with sequence C-PIADTIEGITGNLFD, from the internal region of the protein sequence according to NP\_010157.1.

Please note the [peptide](#) is available for sale.

### Purification and Storage

Purified from goat serum by ammonium sulphate precipitation followed by antigen affinity chromatography using the immunizing peptide.

Supplied at 0.5 mg/ml in Tris saline, 0.02% sodium azide, pH7.3 with 0.5% bovine serum albumin.

Aliquot and store at -20°C. Minimize freezing and thawing.

### Applications Tested

**Peptide ELISA:** antibody detection limit dilution 1:128000.

**Western blot:** Approx 100kDa band observed in lysates of cell line HeLa (calculated MW of 92.0kDa according to NP\_010157.1). Recommended concentration: 0.3-1µg/ml.

**IHC:** Paraffin embedded Human Prostate. Recommended concentration: 5µg/ml.

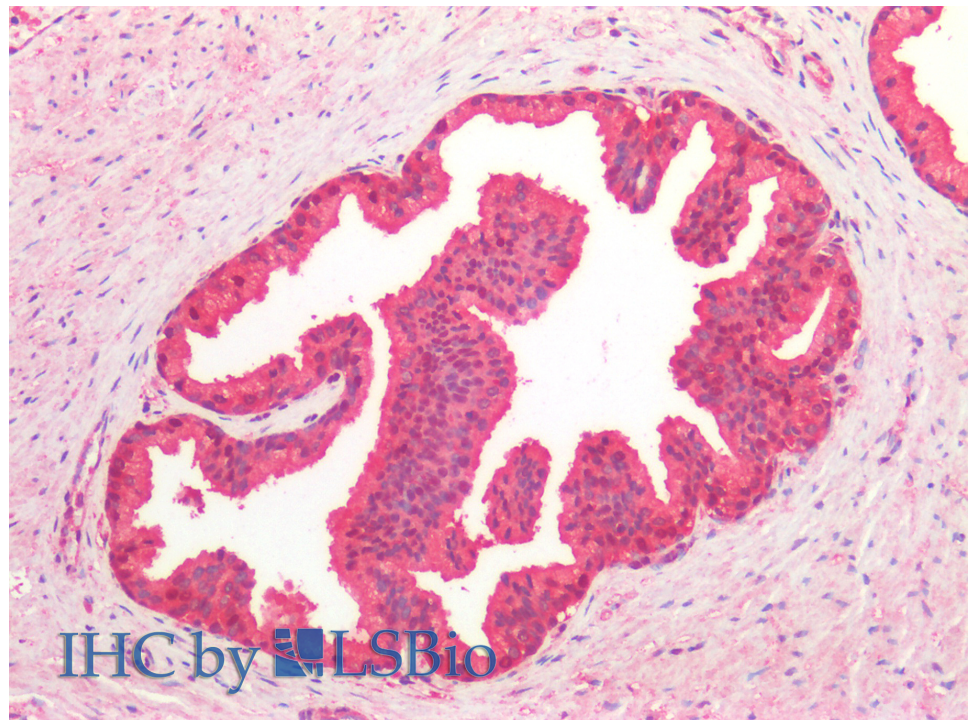
### Species Reactivity

**Tested:** Human

**Expected from sequence similarity:** Saccharomyces cerevisiae S288c, Human, Mouse, Rat, Dog, Cow



EB11799 (0.3 $\mu$ g/ml) staining of HeLa lysate (35 $\mu$ g protein in RIPA buffer). Primary incubation was 1 hour.  
Detected by chemiluminescence.



EB11799 (5 $\mu$ g/ml) staining of paraffin embedded Human Prostate. Steamed antigen retrieval with citrate buffer Ph 6, AP-staining.