



## UK Office

### Everest Biotech Ltd

Cherwell Innovation Centre  
77 Heyford Park  
Upper Heyford  
Oxfordshire  
OX25 5HD  
UK

Enquiries:

[info@everestbiotech.com](mailto:info@everestbiotech.com)

Sales:

[sales@everestbiotech.com](mailto:sales@everestbiotech.com)

Tech support:

[support@everestbiotech.com](mailto:support@everestbiotech.com)

Tel: +44 (0)1869 238326

Fax: +44 (0)1869 238327

## US Office

### Everest Biotech c/o Abcore

405 Maple Street, Suite A106  
Ramona,  
CA 92065  
USA

Inquiries:

[info@everestbiotech.com](mailto:info@everestbiotech.com)

Sales:

[usasales@everestbiotech.com](mailto:usasales@everestbiotech.com)

Tech support:

[support@everestbiotech.com](mailto:support@everestbiotech.com)

Tel: 888-320-4628 (toll-free)

Fax: 888-841-9041

[www.everestbiotech.com](http://www.everestbiotech.com)

**Research Use Only. Not for  
diagnostic or therapeutic use.**

## EB05267 - Goat Anti-CDCP1 (isoform 1: C term) Antibody

Size: 100µg specific antibody in 200µl



### Target Protein

**Principal Names:** CDCP1, CUB domain containing protein 1, HGNC:24357, CD318, SIMA135, TRASK, CUB domain-containing protein 1, transmembrane and associated with src kinases

**Official Symbol:** CDCP1

**Accession Number(s):** NP\_073753.3

**Human GeneID(s):** [64866](#)

**Important Comments:** This antibody is expected to recognize isoform 1 (NP\_073753.3) only.

### Immunogen

Peptide with sequence C-PLLNTQEPMEPAE, from the C Terminus of the protein sequence according to NP\_073753.3.

Please note the [peptide](#) is available for sale.

### Purification and Storage

Purified from goat serum by ammonium sulphate precipitation followed by antigen affinity chromatography using the immunizing peptide.

Supplied at 0.5 mg/ml in Tris saline, 0.02% sodium azide, pH7.3 with 0.5% bovine serum albumin.

Aliquot and store at -20°C. Minimize freezing and thawing.

### Applications Tested

**Peptide ELISA:** antibody detection limit dilution 1:32000.

**Western blot:** Approx 90kDa band observed in Human Colon lysates (calculated MW of 92.3kDa according to NP\_073753.3). Recommended concentration: 1-3µg/ml. An additional band of unknown identity was also consistently observed at 200kDa. This band was successfully blocked by incubation with the immunising peptide. Primary incubation was 1 hour.

**IHC:** Paraffin embedded Human Prostate. Recommended concentration: 5µg/ml.

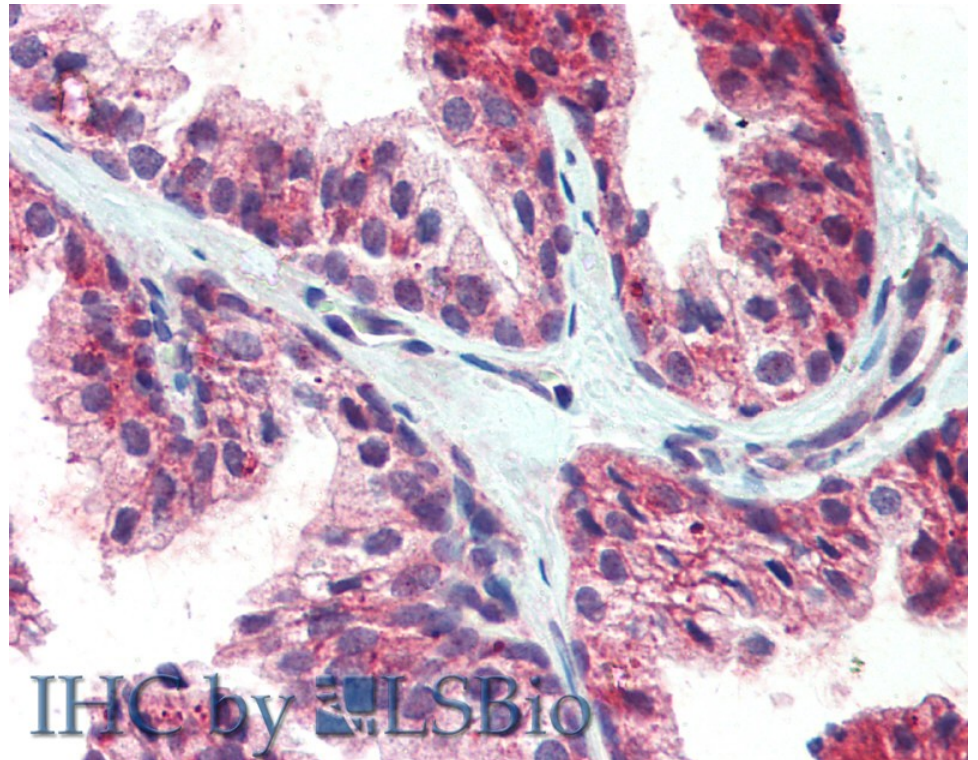
### Species Reactivity

**Tested:** Human

**Expected from sequence similarity:** Human



EB05267 (1µg/ml) staining of Human Colon lysate (35µg protein in RIPA buffer). Detected by chemiluminescence.



EB05267 (5µg/ml) staining of paraffin embedded Human Prostate. Steamed antigen retrieval with citrate buffer pH 6, AP-staining.