



## International Office

### Everest Biotech Ltd

Vector Laboratories, Inc.  
6737 Mowry Ave  
Newark, CA 94560  
United States

Customer Service:

[customerservice@vectorlabs.com](mailto:customerservice@vectorlabs.com)

Technical Service:

[technical@vectorlabs.com](mailto:technical@vectorlabs.com)

Tel: +1 (800) 227-6666

[www.everestbiotech.com](http://www.everestbiotech.com)

**Research Use Only. Not for  
diagnostic or therapeutic use.**

## EB12229 - Goat Anti-CDH13 / H cadherin (aa285-297) Antibody

Size: 100µg specific antibody in 200µl



### Target Protein

**Principal Names:** CDH13, cadherin 13, H-cadherin (heart), CDHH, P105, H-cadherin, T-cad, T-cadherin, cadherin-13, heart cadherin

**Official Symbol:** CDH13

**Accession Number(s):** NP\_001248.1; NP\_001207417.1; NP\_001207418.1, NP\_001207419.1

**Human GeneID(s):** [1012](#)

**Non-Human GeneID(s):** 12554 (mouse), 192248 (rat)

**Important Comments:** This antibody is expected to recognize isoform 1, 2, 3 and 4 (NP\_001248.1; NP\_001207417.1; NP\_001207418.1; NP\_001207419.1).

### Immunogen

Peptide with sequence C-NIRQQTPDKPSPN, from the internal region of the protein sequence according to NP\_001248.1; NP\_001207417.1; NP\_001207418.1, NP\_001207419.1.

Please note the [peptide](#) is available for sale.

### Purification and Storage

Purified from goat serum by ammonium sulphate precipitation followed by antigen affinity chromatography using the immunizing peptide.

Supplied at 0.5 mg/ml in Tris saline, 0.02% sodium azide, pH7.3 with 0.5% bovine serum albumin.

Aliquot and store at -20°C. Minimize freezing and thawing.

### Applications Tested

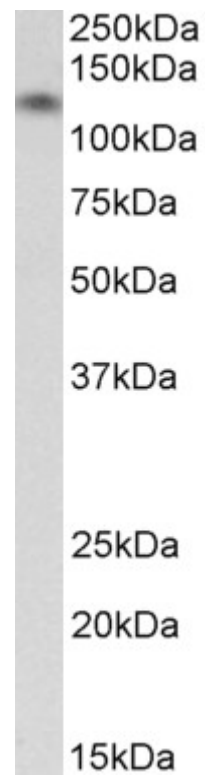
**Peptide ELISA:** antibody detection limit dilution 1:128000.

**Western blot:** Approx 125kDa band observed in Human Heart lysates (calculated MW of 83.4kDa according to NP\_001207417.1). The observed molecular weight corresponds to earlier findings in literature with different antibodies (Zhong et al, Clin Cancer Res. 2001 Jun;7(6):1683-7. PMID: 11410507). Recommended concentration: 0.03-0.1µg/ml.

### Species Reactivity

**Tested:** Human

**Expected from sequence similarity:** Human, Mouse, Rat, Dog, Cow



EB12229 (0.03µg/ml) staining of Human Heart lysate (35µg protein in RIPA buffer). Primary incubation was 1 hour. Detected by chemiluminescence.