

## UK Office

### Everest Biotech Ltd

Cherwell Innovation Centre  
77 Heyford Park  
Upper Heyford  
Oxfordshire  
OX25 5HD  
UK

Enquiries:

[info@everestbiotech.com](mailto:info@everestbiotech.com)

Sales:

[sales@everestbiotech.com](mailto:sales@everestbiotech.com)

Tech support:

[support@everestbiotech.com](mailto:support@everestbiotech.com)

Tel: +44 (0)1869 238326

[www.everestbiotech.com](http://www.everestbiotech.com)

**Research Use Only. Not for  
diagnostic or therapeutic use.**

## EB12228 - Goat Anti-CDH13 / H-cadherin Antibody

Size: 100µg specific antibody in 200µl



### Target Protein

**Principal Names:** CDH13, cadherin 13, H-cadherin (heart), CDHH, P105, H-cadherin, T-cad, T-cadherin, cadherin-13, heart cadherin

**Official Symbol:** CDH13

**Accession Number(s):** NP\_001248.1; NP\_001207417.1; NP\_001207418.1

**Human GeneID(s):** [1012](#)

**Important Comments:** The immunizing peptide represents the N terminus of the mature protein. This antibody is expected to recognize isoform 1, 2 and 3 (NP\_001248.1; NP\_001207417.1; NP\_001207418.1).

### Immunogen

Peptide with sequence C-DSDRPERSKFRLTGK, from the internal region of the protein sequence according to NP\_001248.1; NP\_001207417.1; NP\_001207418.1.

Please note the [peptide](#) is available for sale.

### Purification and Storage

Purified from goat serum by ammonium sulphate precipitation followed by antigen affinity chromatography using the immunizing peptide.

Supplied at 0.5 mg/ml in Tris saline, 0.02% sodium azide, pH7.3 with 0.5% bovine serum albumin.

Aliquot and store at -20°C. Minimize freezing and thawing.

### Applications Tested

**Peptide ELISA:** antibody detection limit dilution 1:4000.

**Western blot:** Approx 110kDa band observed in Human Heart lysates and 85kDa in Human Brain (Amygdala and Hippocampus) lysates (calculated MW of 78.3kDa according to NP\_001248.1). The observed molecular weights correspond to the glycosylated forms.

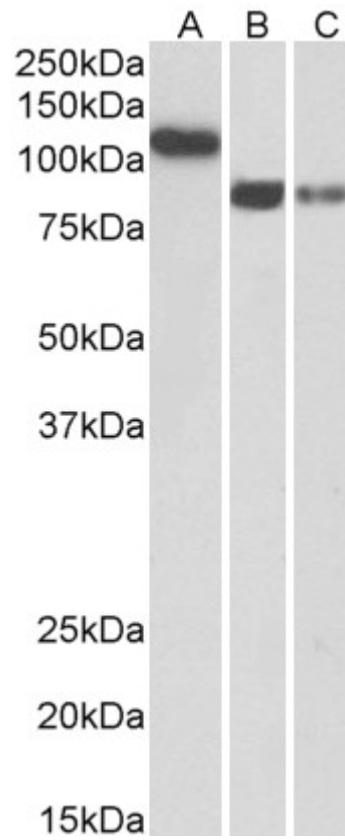
Recommended concentration: 0.3-1µg/ml.

**IHC:** Paraffin embedded Human Heart. Recommended concentration: 5µg/ml.

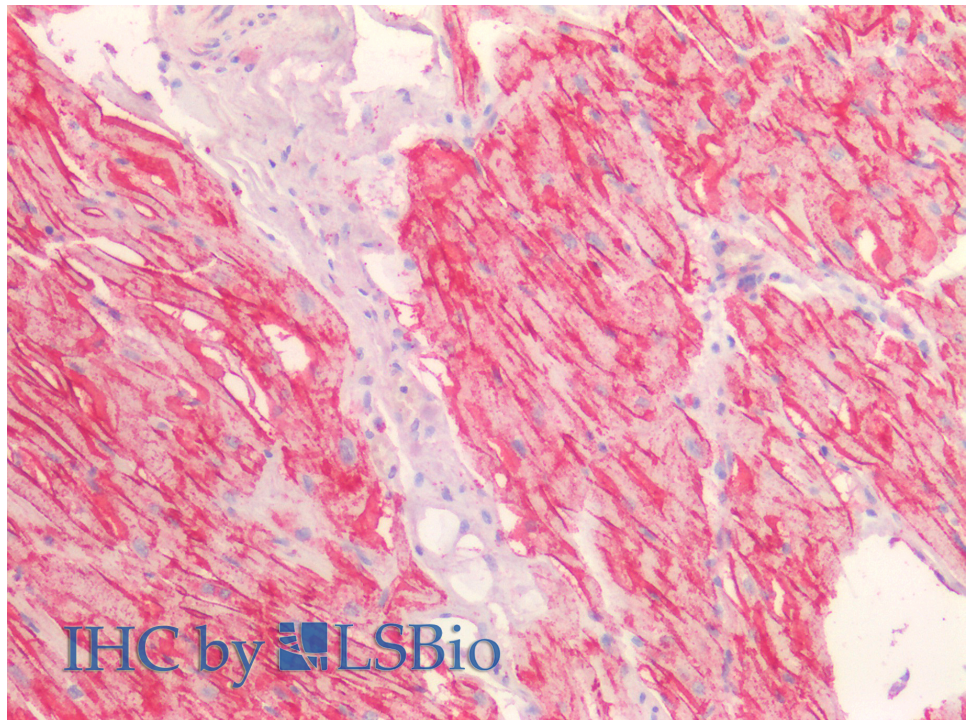
### Species Reactivity

**Tested:** Human

**Expected from sequence similarity:** Human



EB12228 (0.3 $\mu$ g/ml) staining of Human Heart (A), Amygdala (B) and Hippocampus (C) lysates (35 $\mu$ g protein in RIPA buffer). Primary incubation was 1 hour. Detected by chemiluminescence.



EB12228 (5 $\mu$ g/ml) staining of paraffin embedded Human Heart. Steamed antigen retrieval with citrate buffer pH 6, AP-staining.