



UK Office

Everest Biotech Ltd

Cherwell Innovation Centre
77 Heyford Park
Upper Heyford
Oxfordshire
OX25 5HD
UK

Enquiries:

info@everestbiotech.com

Sales:

sales@everestbiotech.com

Tech support:

support@everestbiotech.com

Tel: +44 (0)1869 238326

www.everestbiotech.com

**Research Use Only. Not for
diagnostic or therapeutic use.**

EB09252 - Goat Anti-CDK10 / PISSLRE Antibody

Size: 100µg specific antibody in 200µl



Target Protein

Principal Names: CDK10, cyclin-dependent kinase 10, PISSLRE, CDC2-related protein kinase, cell division protein kinase 10, cyclin-dependent kinase (CDC2-like) 10, cyclin-dependent kinase related protein, serine/threonine protein kinase PISSLRE

Official Symbol: CDK10

Accession Number(s): NP_443714.3

Human GeneID(s): [8558](#)

Important Comments: This antibody is expected to recognize reported isoform a (NP_443714.3).

Immunogen

Peptide with sequence AEPDLECEQIRLK , from the N Terminus of the protein sequence according to NP_443714.3.

Please note the [peptide](#) is available for sale.

Purification and Storage

Purified from goat serum by ammonium sulphate precipitation followed by antigen affinity chromatography using the immunizing peptide.

Supplied at 0.5 mg/ml in Tris saline, 0.02% sodium azide, pH7.3 with 0.5% bovine serum albumin.

Aliquot and store at -20°C. Minimize freezing and thawing.

Applications Tested

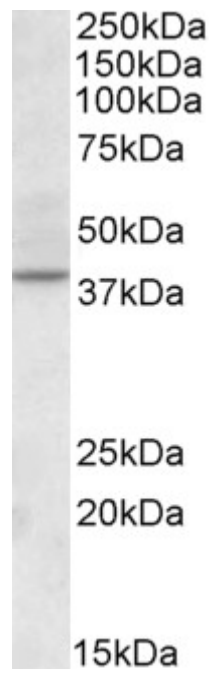
Peptide ELISA: antibody detection limit dilution 1:64000.

Western blot: Approx 38kDa band observed in Human Kidney lysates (calculated MW of 41.0 kDa according to NP_443714.3. Recommended concentration: 2-3µg/ml.

Species Reactivity

Tested: Human

Expected from sequence similarity: Human



EB09252 (2 μ g/ml) staining of Human Kidney lysate (35 μ g protein in RIPA buffer). Primary incubation was 1 hour.
Detected by chemiluminescence.