



UK Office

Everest Biotech Ltd

Cherwell Innovation Centre
77 Heyford Park
Upper Heyford
Oxfordshire
OX25 5HD
UK

Enquiries:

info@everestbiotech.com

Sales:

sales@everestbiotech.com

Tech support:

support@everestbiotech.com

Tel: +44 (0)1869 238326

Fax: +44 (0)1869 238327

US Office

Everest Biotech c/o Abcore

405 Maple Street, Suite A106
Ramona,
CA 92065
USA

Inquiries:

info@everestbiotech.com

Sales:

usasales@everestbiotech.com

Tech support:

support@everestbiotech.com

Tel: 888-320-4628 (toll-free)

Fax: 888-841-9041

www.everestbiotech.com

**Research Use Only. Not for
diagnostic or therapeutic use.**

EB07094-T - Goat Anti-CDKN2A (isoform 1) / p16INK4a Antibody - Trial

Size: 20µg specific antibody in 40µl



Target Protein

Principal Names: CDKN2A, p16INK4a, cyclin-dependent kinase inhibitor 2A (melanoma, p16, inhibits CDK4), HGNC:1787, ARF, CDK4I, CDKN2, CMM2, INK4, INK4a, MLM, MTS1, TP16, p14, p14ARF, p16, p16INK4, p19, CDK4 inhibitor p16-INK4, cell cycle negative regulator beta, cyclin-

Official Symbol: CDKN2A

Accession Number(s): NP_000068.1; NP_001182061.1

Human GeneID(s): [1029](#)

Important Comments: This antibody is expected to recognise isoform p16INK4a (NP_000068.1) and isoform p16gamma (NP_001182061.1).

Immunogen

Peptide with sequence C-HARIDAAEGPSDIPD, from the C Terminus of the protein sequence according to NP_000068.1; NP_001182061.1.

Please note the [peptide](#) is available for sale.

Purification and Storage

Purified from goat serum by ammonium sulphate precipitation followed by antigen affinity chromatography using the immunizing peptide.

Supplied at 0.5 mg/ml in Tris saline, 0.02% sodium azide, pH7.3 with 0.5% bovine serum albumin.

Aliquot and store at -20°C. Minimize freezing and thawing.

Applications Tested

Peptide ELISA: antibody detection limit dilution 1:32000.

Western blot: Approx. 16-18kDa band observed in lysates of the cell lines A431 and HeLa (calculated MW of 16.5kDa according to NP_000068.1). Recommended concentration: 0.1-1µg/ml.

IHC: Paraffin embedded Human Liver. Recommended concentration: 5µg/ml.

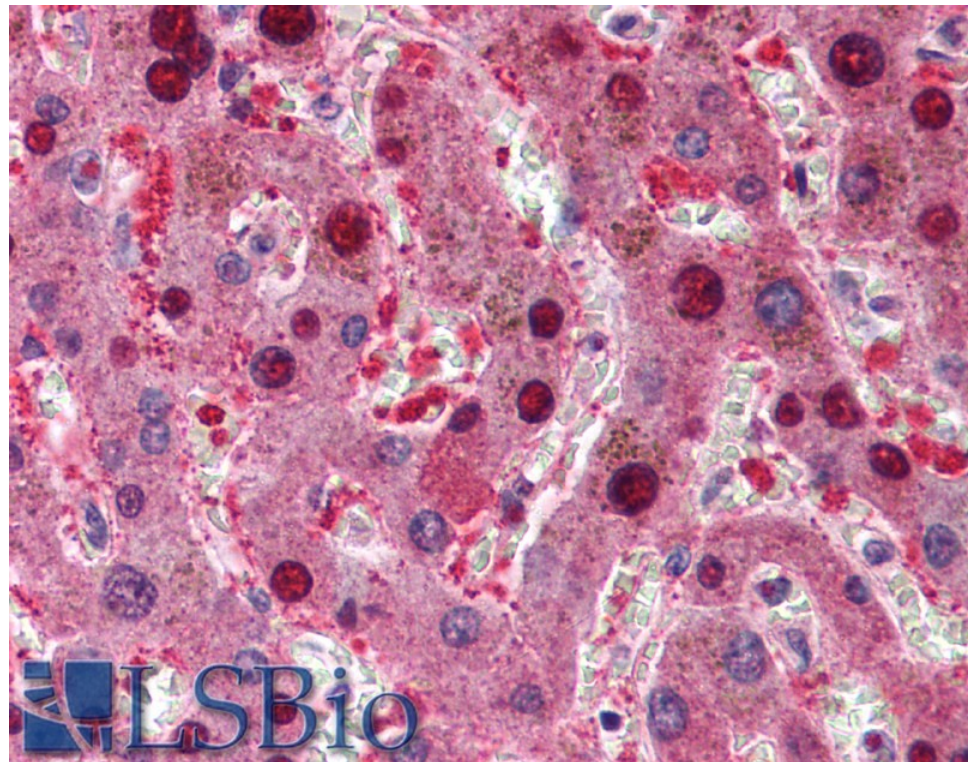
Species Reactivity

Tested: Human

Expected from sequence similarity: Human



EB07094 (1 µg/ml) staining of HeLa Lysate (35 µg protein in RIPA buffer). Primary incubation was 1 hour.
Detected by chemiluminescence.



EB07094 (5 µg/ml) staining of paraffin embedded Human Liver. Steamed antigen retrieval with citrate buffer pH 6, AP-staining.