



UK Office

Everest Biotech Ltd

Cherwell Innovation Centre
77 Heyford Park
Upper Heyford
Oxfordshire
OX25 5HD
UK

Enquiries:

info@everestbiotech.com

Sales:

sales@everestbiotech.com

Tech support:

support@everestbiotech.com

Tel: +44 (0)1869 238326

www.everestbiotech.com

**Research Use Only. Not for
diagnostic or therapeutic use.**

EB07092 - Goat Anti-CDKN2A (isoform 3) Antibody

Size: 100µg specific antibody in 200µl



Target Protein

Principal Names: CDKN2A, cyclin-dependent kinase inhibitor 2A (melanoma, p16, inhibits CDK4), HGNC:1787, ARF, CDK4I, CDKN2, CMM2, INK4, INK4a, MLM, MTS1, TP16, p14, p14ARF, p16, p16INK4, p16INK4a, p19, CDK4 inhibitor p16-INK4, cell cycle negative regulator beta, cyclin-dependent kinase inhibitor 2A, cyclin-dependent kinase inhibitor 2A, p14ARF, cyclin-dependent kinase inhibitor p12, p16INK4a alternatively spliced form, cyclin-dependent kinase inhibitor p16, multiple tumor suppressor 1

Official Symbol: CDKN2A

Accession Number(s): NP_478104.1

Human GeneID(s): [1029](#)

Important Comments: This antibody is expected to recognize the pancreas isoform (NP_478104.1) only.

Immunogen

Peptide with sequence C-ILRKKGRLPGEFSE, from the internal region of the protein sequence according to NP_478104.1.

Please note the [peptide](#) is available for sale.

Purification and Storage

Purified from goat serum by ammonium sulphate precipitation followed by antigen affinity chromatography using the immunizing peptide.

Supplied at 0.5 mg/ml in Tris saline, 0.02% sodium azide, pH7.3 with 0.5% bovine serum albumin.

Aliquot and store at -20°C. Minimize freezing and thawing.

Applications Tested

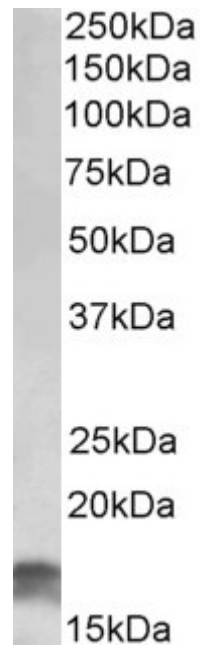
Peptide ELISA: antibody detection limit dilution 1:128000.

Western blot: Approx 17kDa band observed in lysates of cell line HeLa (calculated MW of 12.1kDa according to NP_478104.1). Recommended concentration: 1-3µg/ml.

Species Reactivity

Tested: Human

Expected from sequence similarity: Human



EB07091 (1 μ g/ml) staining of HeLa lysate (35 μ g protein in RIPA buffer). Primary incubation was 1 hour.
Detected by chemiluminescence.