



UK Office

Everest Biotech Ltd

Cherwell Innovation Centre
77 Heyford Park
Upper Heyford
Oxfordshire
OX25 5HD
UK

Enquiries:

info@everestbiotech.com

Sales:

sales@everestbiotech.com

Tech support:

support@everestbiotech.com

Tel: +44 (0)1869 238326

www.everestbiotech.com

**Research Use Only. Not for
diagnostic or therapeutic use.**

EB08423 - Goat Anti-CEBPG Antibody

Size: 100µg specific antibody in 200µl



Target Protein

Principal Names: CEBPG, CCAAT/enhancer binding protein (C/EBP), gamma, GPE1BP, IG/EBP-1, CCAAT/enhancer binding protein gamma

Official Symbol: CEBPG

Accession Number(s): NP_001797.1

Human GeneID(s): [1054](#)

Immunogen

Peptide with sequence C-ENTTADGDNAGQ, from the C Terminus of the protein sequence according to NP_001797.1.

Please note the [peptide](#) is available for sale.

Purification and Storage

Purified from goat serum by ammonium sulphate precipitation followed by antigen affinity chromatography using the immunizing peptide.

Supplied at 0.5 mg/ml in Tris saline, 0.02% sodium azide, pH7.3 with 0.5% bovine serum albumin.

Aliquot and store at -20°C. Minimize freezing and thawing.

Applications Tested

Peptide ELISA: antibody detection limit dilution 1:2000.

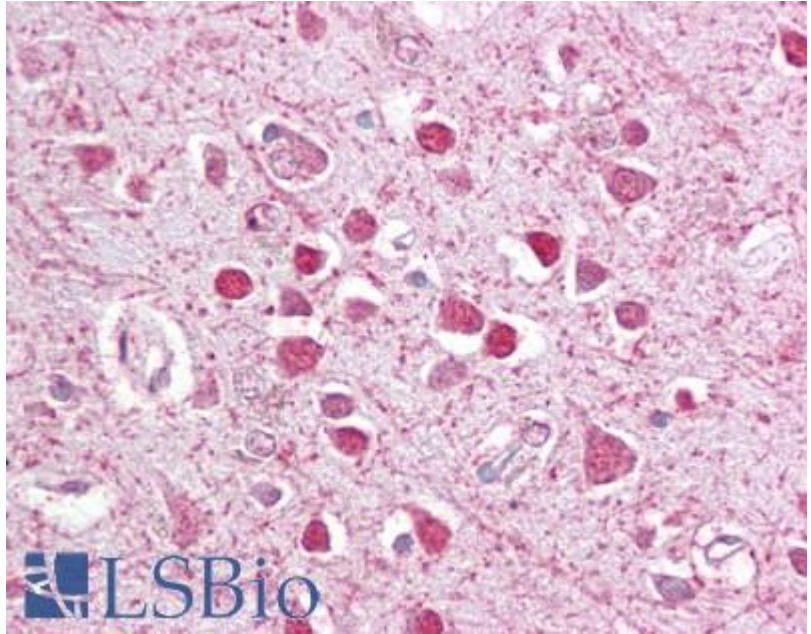
Western blot: Preliminary experiments gave an approx. 26kDa band in Human Lung lysates and in lysates of cell lines A549 after 1µg/ml antibody staining. Please note that currently we cannot find an explanation in the literature for the band we observe given the calculated size of 16.4kDa according to NP_001797.1. The 26kDa band was successfully blocked by incubation with the immunizing peptide.

IHC: Paraffin embedded Human Brain (Cortex). Recommended concentration: 2.5µg/ml.

Species Reactivity

Tested: Human

Expected from sequence similarity: Human



EB08423 (2.5µg/ml) staining of paraffin embedded Human Cortex. Steamed antigen retrieval with citrate buffer pH 6, AP-staining.