



UK Office

Everest Biotech Ltd

Cherwell Innovation Centre
77 Heyford Park
Upper Heyford
Oxfordshire
OX25 5HD
UK

Enquiries:

info@everestbiotech.com

Sales:

sales@everestbiotech.com

Tech support:

support@everestbiotech.com

Tel: +44 (0)1869 238326

Fax: +44 (0)1869 238327

US Office

Everest Biotech c/o Abcore

405 Maple Street, Suite A106
Ramona,
CA 92065
USA

Inquiries:

info@everestbiotech.com

Sales:

usasales@everestbiotech.com

Tech support:

support@everestbiotech.com

Tel: 888-320-4628 (toll-free)

Fax: 888-841-9041

www.everestbiotech.com

**Research Use Only. Not for
diagnostic or therapeutic use.**

EB06120 - Goat Anti-CENTA1 Antibody

Size: 100µg specific antibody in 200µl



Target Protein

Principal Names: ADAP1, CENTA1, centaurin, alpha 1, GCS1L, p42IP4, centaurin-alpha, ArfGAP with dual PH domains 1

Official Symbol: ADAP1

Accession Number(s): NP_006860.1

Human GeneID(s): [11033](#)

Non-Human GeneID(s): 231821 (mouse), 171097 (rat)

Immunogen

Peptide with sequence C-QEYAVEAHFKHKP, from the C Terminus of the protein sequence according to NP_006860.1.

Please note the [peptide](#) is available for sale.

Purification and Storage

Purified from goat serum by ammonium sulphate precipitation followed by antigen affinity chromatography using the immunizing peptide.

Supplied at 0.5 mg/ml in Tris saline, 0.02% sodium azide, pH7.3 with 0.5% bovine serum albumin.

Aliquot and store at -20°C. Minimize freezing and thawing.

Applications Tested

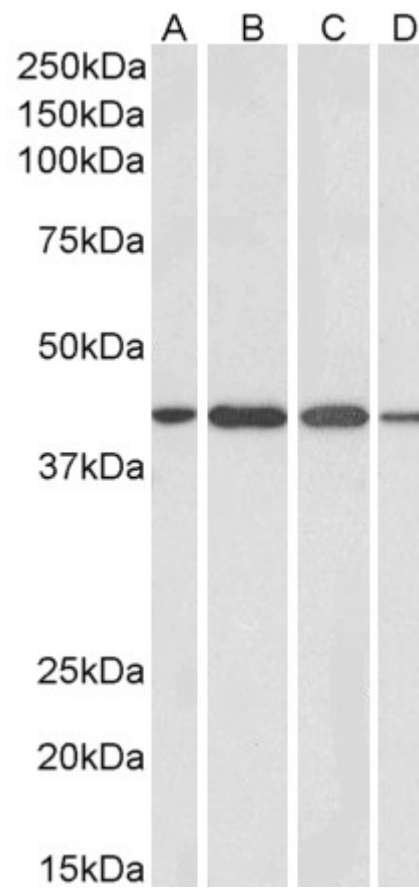
Peptide ELISA: antibody detection limit dilution 1:32000.

Western blot: Approx 45kDa band observed in Human Brain (Cerebellum), Mouse, Rat and Pig Brain lysates (calculated MW of 43.4kDa according to Human NP_006860.1, Mouse NP_766311.2, Rat NP_598251.1 and Pig NP_999391.1). Recommended concentration: 1-3µg/ml.

Species Reactivity

Tested: Human, Mouse, Rat, Pig

Expected from sequence similarity: Human, Mouse, Rat, Pig, Dog



EB06120 (1 μ g/ml) staining of Human Cerebellum (A), Mouse (B), Rat (C) and Pig (D) Brain lysates (35 μ g protein in RIPA buffer). Primary incubation was 1 hour. Detected by chemiluminescence.