



## International Office

### Everest Biotech Ltd

Vector Laboratories, Inc.  
6737 Mowry Ave  
Newark, CA 94560  
United States

Customer Service:

[customerservice@vectorlabs.com](mailto:customerservice@vectorlabs.com)

Technical Service:

[technical@vectorlabs.com](mailto:technical@vectorlabs.com)

Tel: +1 (800) 227-6666

[www.everestbiotech.com](http://www.everestbiotech.com)

**Research Use Only. Not for  
diagnostic or therapeutic use.**

## EB06121 - Goat Anti-CENTA2 Antibody

Size: 100µg specific antibody in 200µl



### Target Protein

**Principal Names:** ADAP2, CENTA2, centaurin, alpha 2, HSA272195, centaurin-alpha 2 protein, ArfGAP with dual PH domains 2, cent-b, centaurin beta

**Official Symbol:** ADAP2

**Accession Number(s):** NP\_060874.1

**Human GeneID(s):** [55803](#)

### Immunogen

Peptide with sequence C-RLTASTESGRSSR, from the C Terminus of the protein sequence according to NP\_060874.1.

Please note the [peptide](#) is available for sale.

### Purification and Storage

Purified from goat serum by ammonium sulphate precipitation followed by antigen affinity chromatography using the immunizing peptide.

Supplied at 0.5 mg/ml in Tris saline, 0.02% sodium azide, pH7.3 with 0.5% bovine serum albumin.

Aliquot and store at -20°C. Minimize freezing and thawing.

### Applications Tested

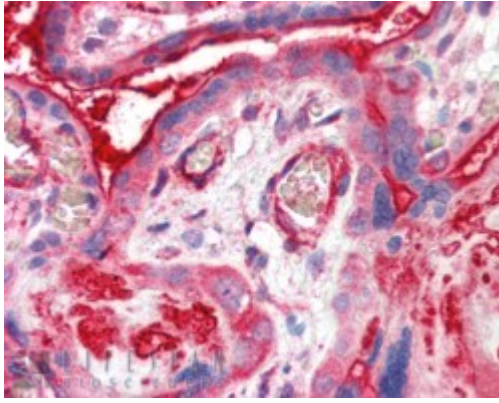
**Peptide ELISA:** antibody detection limit dilution 1:32000.

**IHC:** In paraffin embedded Human Placenta shows strong staining of cytoplasm in syncytiotrophoblasts. Recommended concentration, 5-10µg/ml.

### Species Reactivity

**Tested:** Human

**Expected from sequence similarity:** Human



EB06121 (5µg/ml) staining of paraffin embedded Human Placenta. Steamed antigen retrieval with citrate buffer pH 6, AP-staining.