



UK Office

Everest Biotech Ltd

Cherwell Innovation Centre
77 Heyford Park
Upper Heyford
Oxfordshire
OX25 5HD
UK

Enquiries:

info@everestbiotech.com

Sales:

sales@everestbiotech.com

Tech support:

support@everestbiotech.com

Tel: +44 (0)1869 238326

www.everestbiotech.com

**Research Use Only. Not for
diagnostic or therapeutic use.**

EB06126 - Goat Anti-CENTD2 / ARAP1 Antibody

Size: 100µg specific antibody in 200µl



Target Protein

Principal Names: ARAP1, CENTD2, centaurin, delta 2, KIAA0782, ARF-GAP, RHO-GAP, ankyrin repeat, and pleckstrin homology domains-containing protein 1, ArfGAP with RhoGAP domain, ankyrin repeat and PH domain 1, OTTHUMP00000211462

Official Symbol: ARAP1

Accession Number(s): NP_056057.2; NP_001035207.1; NP_001128662.1

Human GeneID(s): [116985](#)

Non-Human GeneID(s): 69710 (mouse)

Important Comments: This antibody is expected to recognise isoform a (NP_056057.2), isoform c (NP_001035207.1) and isoform d (NP_001128662.1).

Immunogen

Peptide with sequence C-AFTADPLSLLRNV, from the C Terminus of the protein sequence according to NP_056057.2; NP_001035207.1; NP_001128662.1.

Please note the [peptide](#) is available for sale.

Purification and Storage

Purified from goat serum by ammonium sulphate precipitation followed by antigen affinity chromatography using the immunizing peptide.

Supplied at 0.5 mg/ml in Tris saline, 0.02% sodium azide, pH7.3 with 0.5% bovine serum albumin.

Aliquot and store at -20°C. Minimize freezing and thawing.

Applications Tested

Peptide ELISA: antibody detection limit dilution 1:32000.

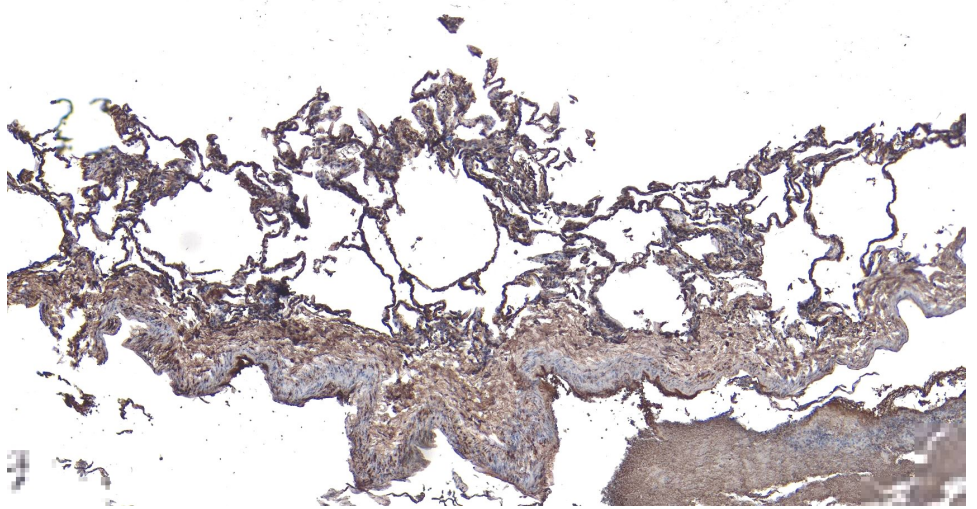
Western blot: This antibody showed a 150KDa in NIH3T3 lysates.

IHC: Paraffin embedded Human Lung. Recommended concentration: 6-8µg/ml.

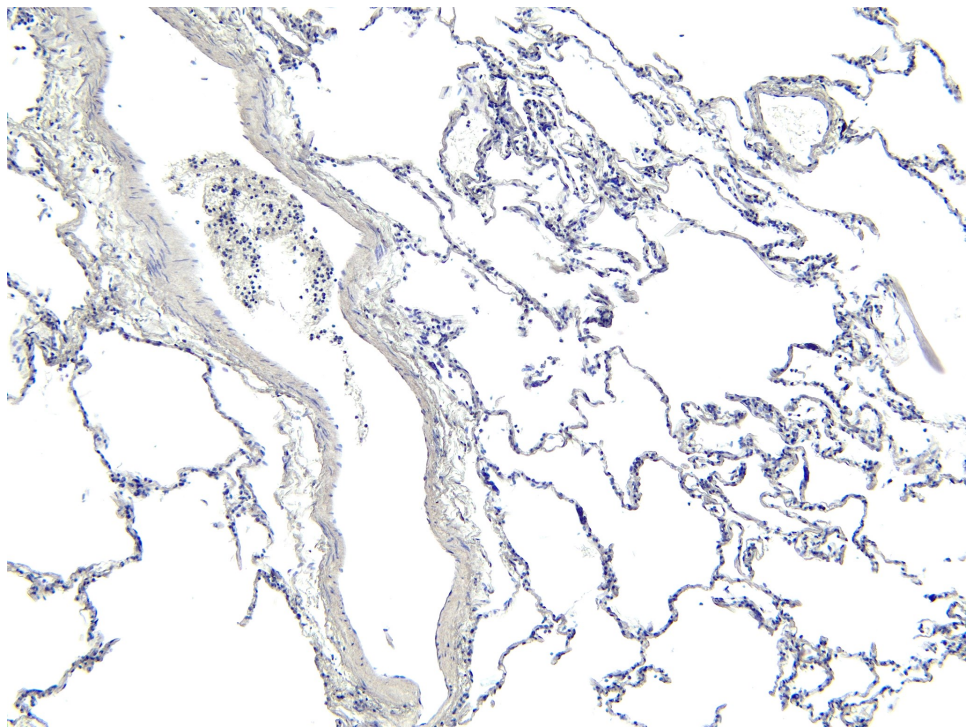
Species Reactivity

Tested: Human, Mouse

Expected from sequence similarity: Human, Mouse, Rat, Dog, Pig, Cow



EB06126 (6 μ g/ml) staining of paraffin embedded Human Lung. Heat induced antigen retrieval with citrate buffer pH 6, HRP-staining.



EB06126 Negative Control showing staining of paraffin embedded Human Lung, with no primary antibody.