



UK Office

Everest Biotech Ltd

Cherwell Innovation Centre
77 Heyford Park
Upper Heyford
Oxfordshire
OX25 5HD
UK

Enquiries:

info@everestbiotech.com

Sales:

sales@everestbiotech.com

Tech support:

support@everestbiotech.com

Tel: +44 (0)1869 238326

Fax: +44 (0)1869 238327

US Office

Everest Biotech c/o Abcore

405 Maple Street, Suite A106
Ramona,
CA 92065
USA

Inquiries:

info@everestbiotech.com

Sales:

usasales@everestbiotech.com

Tech support:

support@everestbiotech.com

Tel: 888-320-4628 (toll-free)

Fax: 888-841-9041

www.everestbiotech.com

**Research Use Only. Not for
diagnostic or therapeutic use.**

EB09314 - Goat Anti-CENTG1 / PIKE Antibody

Size: 100µg specific antibody in 200µl



Target Protein

Principal Names: CENTG1, centaurin, gamma 1, AGAP2, FLJ16430, GGAP2, KIAA0167, PIKE, Arf GAP with GTP-binding protein-like, ANK repeat and PH domains 2, GTP-binding and GTPase activating protein 2, centaurin gamma1, phosphoinositide 3-kinase enhancer

Official Symbol: AGAP2

Accession Number(s): NP_055585.1

Human GeneID(s): [116986](#)

Important Comments: This antibody is expected to recognize isoform PIKE-S (NP_055585.1).

Immunogen

Peptide with sequence C-QASLDSIREAVINSQ, from the internal region of the protein sequence according to NP_055585.1.

Please note the [peptide](#) is available for sale.

Purification and Storage

Purified from goat serum by ammonium sulphate precipitation followed by antigen affinity chromatography using the immunizing peptide.

Supplied at 0.5 mg/ml in Tris saline, 0.02% sodium azide, pH7.3 with 0.5% bovine serum albumin.

Aliquot and store at -20°C. Minimize freezing and thawing.

Applications Tested

Peptide ELISA: antibody detection limit dilution 1:8000.

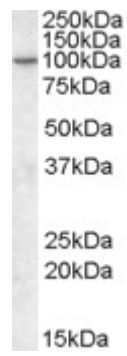
Western blot: Approx 100kDa band observed in Human Brain (Amygdala and Cerebral Cortex) lysates (calculated MW of 90.5kDa according to NP_055585.1). Recommended concentration: 0.3-1µg/ml. Primary incubation was 1 hour.

IHC: Paraffin embedded Human Thyroid and Kidney. Recommended concentration: 3.75µg/ml.

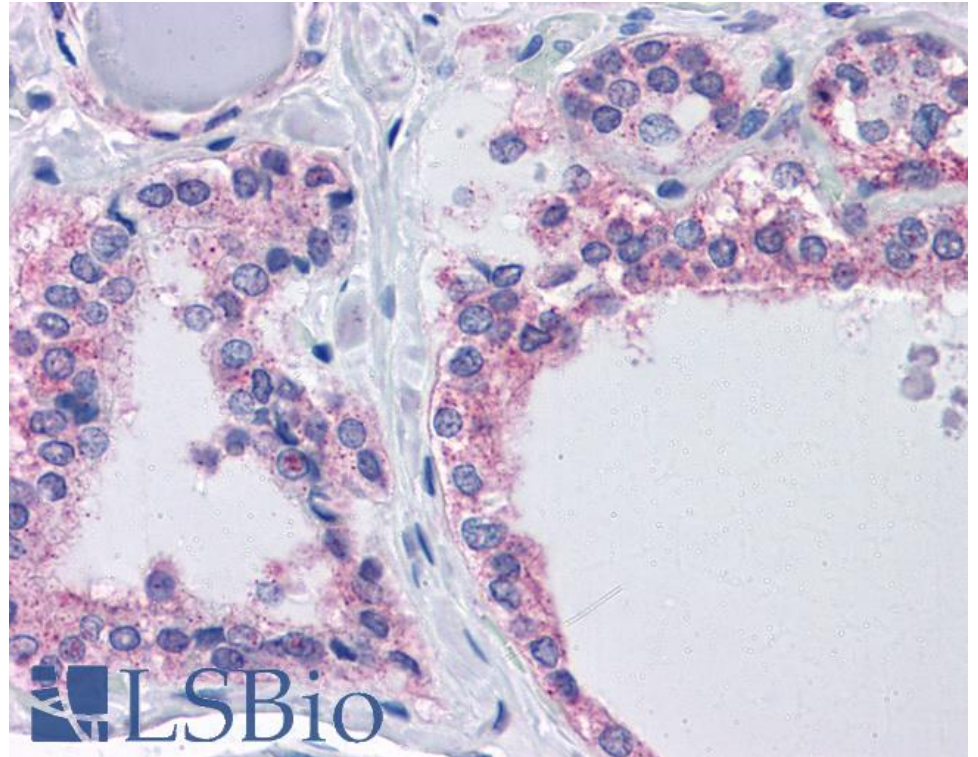
Species Reactivity

Tested: Human

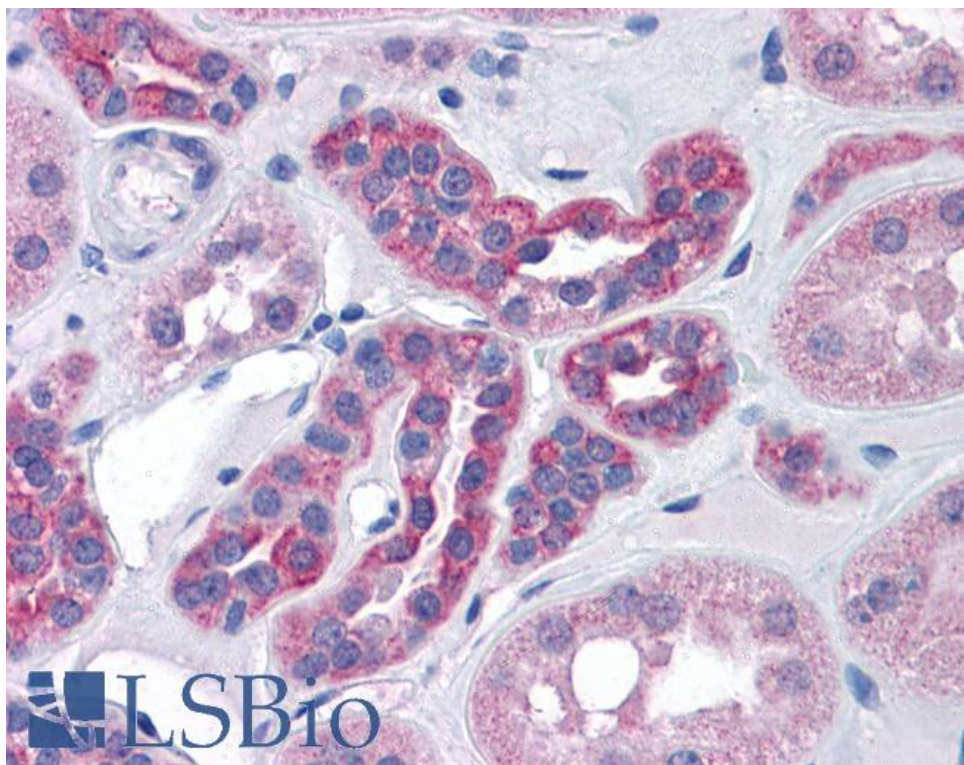
Expected from sequence similarity: Human



EB09314 (0.3µg/ml) staining of Human Amygdala lysate (35µg protein in RIPA buffer). Detected by chemiluminescence.



EB09314 (3.75µg/ml) staining of paraffin embedded Human Thyroid. Steamed antigen retrieval with citrate buffer pH 6, AP-staining.



EB09314 (3.75µg/ml) staining of paraffin embedded Human Kidney. Steamed antigen retrieval with citrate buffer pH 6, AP-staining.