



## UK Office

### Everest Biotech Ltd

Cherwell Innovation Centre  
77 Heyford Park  
Upper Heyford  
Oxfordshire  
OX25 5HD  
UK

Enquiries:

[info@everestbiotech.com](mailto:info@everestbiotech.com)

Sales:

[sales@everestbiotech.com](mailto:sales@everestbiotech.com)

Tech support:

[support@everestbiotech.com](mailto:support@everestbiotech.com)

Tel: +44 (0)1869 238326

Fax: +44 (0)1869 238327

## US Office

### Everest Biotech c/o Abcore

405 Maple Street, Suite A106  
Ramona,  
CA 92065  
USA

Inquiries:

[info@everestbiotech.com](mailto:info@everestbiotech.com)

Sales:

[usasales@everestbiotech.com](mailto:usasales@everestbiotech.com)

Tech support:

[support@everestbiotech.com](mailto:support@everestbiotech.com)

Tel: 888-320-4628 (toll-free)

Fax: 888-841-9041

[www.everestbiotech.com](http://www.everestbiotech.com)

**Research Use Only. Not for  
diagnostic or therapeutic use.**

## EB05622 - Goat Anti-Centromere protein F / mitosin Antibody

Size: 100µg specific antibody in 200µl



### Target Protein

**Principal Names:** CENPF, centromere protein F (350/400kD, mitosin), CENF, PRO1779, mitosin, AH antigen, CENP-F kinetochore protein, centromere protein F (400kD), cell-cycle-dependent 350K nuclear protein, centromere protein F, 350/400ka (mitosin), RP11-262H5.1, hcp-1, centromere protein F, mitosin

**Official Symbol:** CENPF

**Accession Number(s):** AAA82889.1; AAA82935.1; AAA86889.1

**Human GeneID(s):** [1063](#)

**Important Comments:** The immunizing peptide shows one mismatch with the corresponding sequence of the NCBI-curated isoform NP\_057427.3.

### Immunogen

Peptide with sequence GLESKGSENCKVQ, from the C Terminus of the protein sequence according to AAA82889.1; AAA82935.1; AAA86889.1.

Please note the [peptide](#) is available for sale.

### Purification and Storage

Purified from goat serum by ammonium sulphate precipitation followed by antigen affinity chromatography using the immunizing peptide.

Supplied at 0.5 mg/ml in Tris saline, 0.02% sodium azide, pH7.3 with 0.5% bovine serum albumin.

Aliquot and store at -20°C. Minimize freezing and thawing.

### Applications Tested

**Peptide ELISA:** antibody detection limit dilution 1:64000.

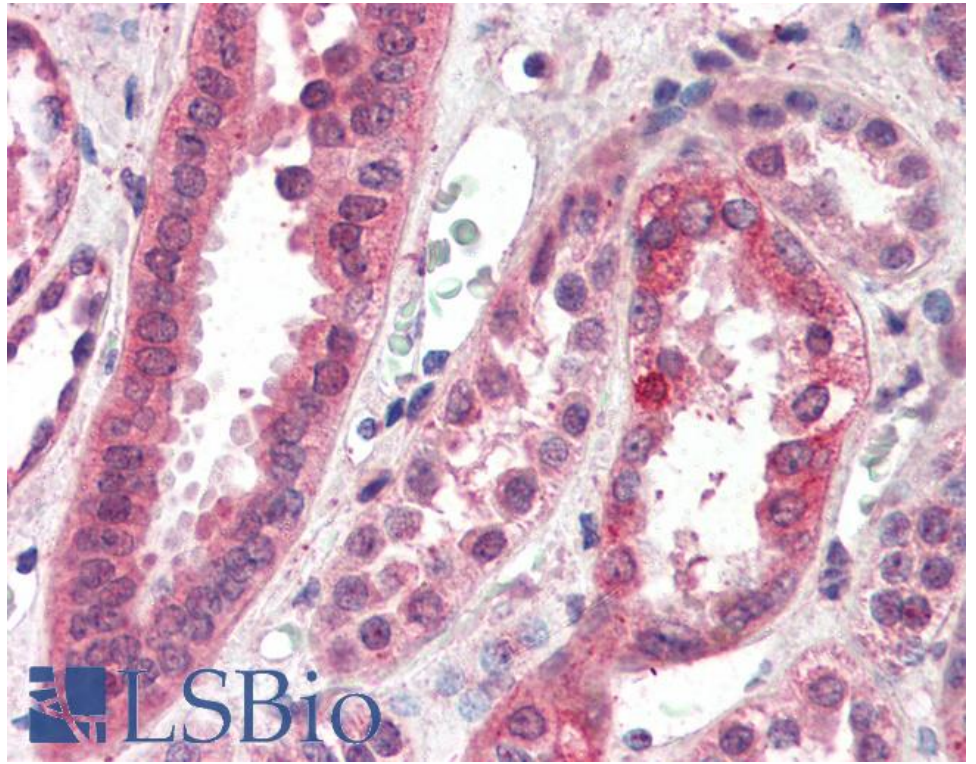
**Western blot:** Not yet tested - our routinely used western blotting protocol does not allow detection of proteins as large as the predicted size of approx. 358kDa according to NP\_057427. Therefore we cannot recommend an optimal concentration.

**IHC:** Paraffin embedded Human Kidney. Recommended concentration: 3.75µg/ml.

### Species Reactivity

**Tested:** Human

**Expected from sequence similarity:** Human, Cow



EB05622 (3.75µg/ml) staining of paraffin embedded Human Kidney. Steamed antigen retrieval with citrate buffer pH 6, AP-staining.