



International Office

Everest Biotech Ltd

Vector Laboratories, Inc.
6737 Mowry Ave
Newark, CA 94560
United States

Customer Service:

customerservice@vectorlabs.com

Technical Service:

technical@vectorlabs.com

Tel: +1 (800) 227-6666

www.everestbiotech.com

**Research Use Only. Not for
diagnostic or therapeutic use.**

EB09122 - Goat Anti-CEP290 Antibody

Size: 100µg specific antibody in 200µl



Target Protein

Principal Names: CEP290, centrosomal protein 290kDa, 3H11Ag, BBS14, FLJ13615, FLJ21979, JBTS5, JBTS6, KIAA0373, LCA10, MKS4, NPHP6, SLSN6, rd16, CTCL tumor antigen se2-2, monoclonal antibody 3H11 antigen, nephrocytin-6, prostate cancer antigen T21

Official Symbol: CEP290

Accession Number(s): NP_079390.3

Human GeneID(s): [80184](#)

Non-Human GeneID(s): 216274 (mouse)

Important Comments: Despite similarity of the immunizing peptide with the mouse protein, this antibody was demonstrated to weak for mouse Cep290.

Immunogen

Peptide with sequence C-RNSKHLKQQQYRAEN, from the internal region of the protein sequence according to NP_079390.3.

Please note the [peptide](#) is available for sale.

Purification and Storage

Purified from goat serum by ammonium sulphate precipitation followed by antigen affinity chromatography using the immunizing peptide.

Supplied at 0.5 mg/ml in Tris saline, 0.02% sodium azide, pH7.3 with 0.5% bovine serum albumin.

Aliquot and store at -20°C. Minimize freezing and thawing.

Applications Tested

Peptide ELISA: antibody detection limit dilution 1:128000.

IHC: Paraffin embedded Human Prostate. Recommended concentration: 5-7µg/ml.

Immunocytochemistry: Formaldehyde-fixed cell lines derived from Prostate Cancer and from Breast Cancer show typical centrosomal staining. Recommended concentration: 2-3ug/ml.

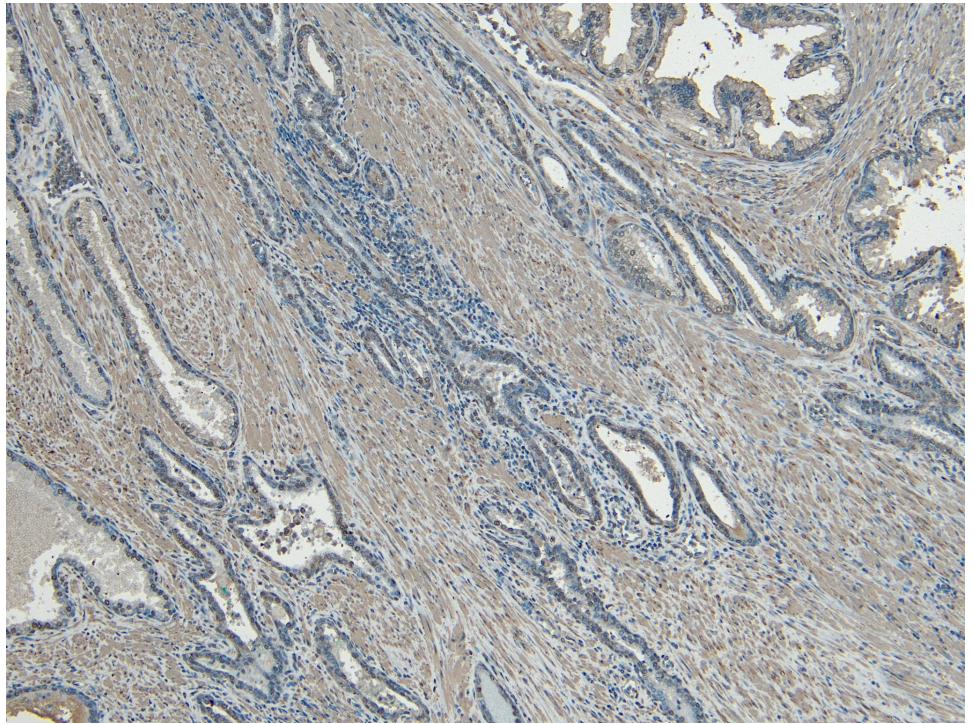
Species Reactivity

Tested: Human

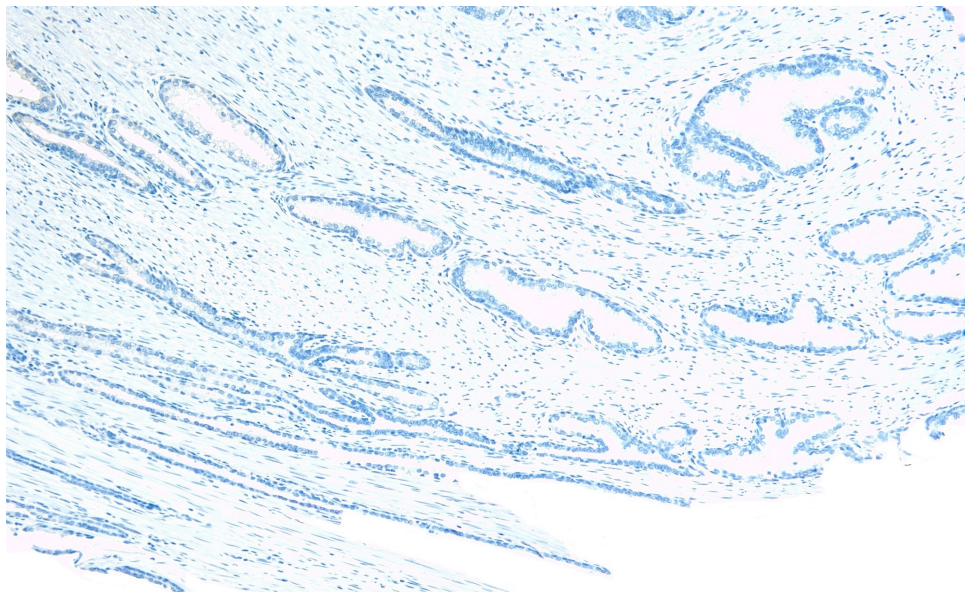
Expected from sequence similarity: Human

Specific Reference

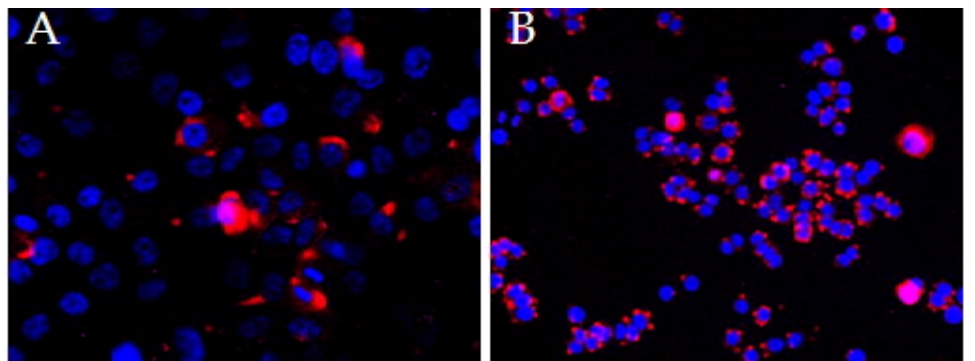
PMID: 0



EB09122 (5µg/ml) staining of paraffin embedded Human Prostate. Heat induced antigen retrieval with citrate buffer pH 6, HRP-staining.



EB09122 Negative Control showing staining of paraffin embedded Human Prostate, with no primary antibody.



EB09122 (2.5ug/ml overnight staining of cell lines OPCT-1 (A) and MDA468 (fB) with Alexa Fluor 568 (red) and nuclear counter staining with DAPI (blue). Data kindly provided by Dr S, McArdle, and obtained by Sumanjeet Malhi , John van Geest Research Centre, Nottingham, UK