



UK Office

Everest Biotech Ltd

Cherwell Innovation Centre
77 Heyford Park
Upper Heyford
Oxfordshire
OX25 5HD
UK

Enquiries:

info@everestbiotech.com

Sales:

sales@everestbiotech.com

Tech support:

support@everestbiotech.com

Tel: +44 (0)1869 238326

www.everestbiotech.com

**Research Use Only. Not for
diagnostic or therapeutic use.**

EB06894 - Goat Anti-CFC1 / Cripto-1 Antibody

Size: 100µg specific antibody in 200µl



Target Protein

Principal Names: CFC1, HTX2, CRYPTIC, cripto, FRL-1, cryptic family 1, cripto-1, cryptic, cryptic gene, MGC133213, CR-1, FLJ77897

Official Symbol: CFC1

Accession Number(s): NP_115934.1

Human GeneID(s): [55997](#)

Immunogen

Peptide with sequence HFTGRYCEHDQRRSEC, from the internal region of the protein sequence according to NP_115934.1.

Please note the [peptide](#) is available for sale.

Purification and Storage

Purified from goat serum by ammonium sulphate precipitation followed by antigen affinity chromatography using the immunizing peptide.

Supplied at 0.5 mg/ml in Tris saline, 0.02% sodium azide, pH7.3 with 0.5% bovine serum albumin.

Aliquot and store at -20°C. Minimize freezing and thawing.

Applications Tested

Peptide ELISA: antibody detection limit dilution 1:32000.

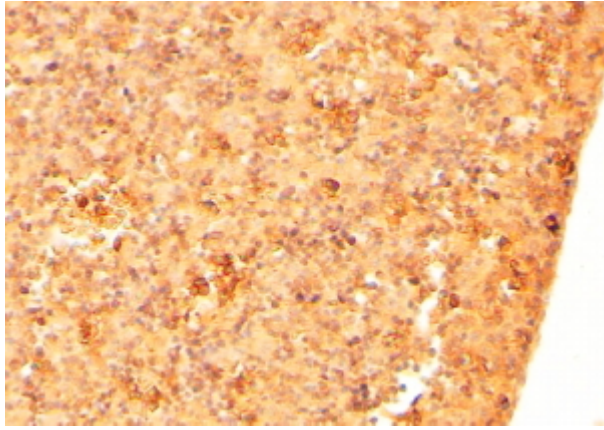
Western blot: Preliminary experiments gave an approx 55kDa band in Human Breast, Placenta and Testis lysates after 0.1µg/ml antibody staining. Please note that currently we cannot find an explanation in the literature for the band we observe given the calculated size of 24.6kDa according to NP_115934.1. The 55kDa band was successfully blocked by incubation with the immunizing peptide.

IHC: In paraffin embedded Mouse Embryonic Liver shows staining of the hepatocyte cell membranes. Recommended concentration: 1-2µg/ml.

Species Reactivity

Tested: Mouse

Expected from sequence similarity: Human, Mouse, Rat



EB06894 (2 μ g/ml) staining of paraffin embedded Mouse Embryo Liver. Steamed antigen retrieval with citrate buffer pH 6, HRP-staining.