



International Office

Everest Biotech Ltd

Vector Laboratories, Inc.
6737 Mowry Ave
Newark, CA 94560
United States

Customer Service:

customerservice@vectorlabs.com

Technical Service:

technical@vectorlabs.com

Tel: +1 (800) 227-6666

www.everestbiotech.com

**Research Use Only. Not for
diagnostic or therapeutic use.**

EB06694 - Goat Anti-CFTR Antibody

Size: 100µg specific antibody in 200µl



Target Protein

Principal Names: CFTR, CF, MRP7, ABC35, ABCC7, TNF-CFTR, dJ760C5.1, cystic fibrosis transmembrane conductance regulator, ATP-binding cassette (sub-family C, member 7), CFTR/MRP, ATP-binding cassette, sub-family C member 7

Official Symbol: CFTR

Accession Number(s): NP_000483.3

Human GeneID(s): [1080](#)

Non-Human GeneID(s): 12638 (mouse), 24255 (rat)

Immunogen

Peptide with sequence QRSPLKASVVSK-C, from the N Terminus of the protein sequence according to NP_000483.3.

Please note the [peptide](#) is available for sale.

Purification and Storage

Purified from goat serum by ammonium sulphate precipitation followed by antigen affinity chromatography using the immunizing peptide.

Supplied at 0.5 mg/ml in Tris saline, 0.02% sodium azide, pH7.3 with 0.5% bovine serum albumin.

Aliquot and store at -20°C. Minimize freezing and thawing.

Applications Tested

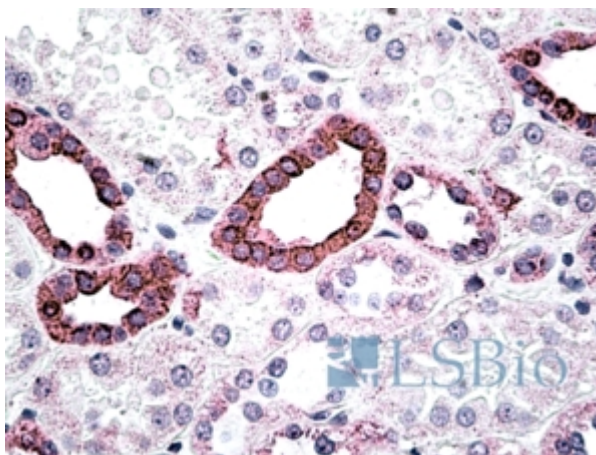
Peptide ELISA: antibody detection limit dilution 1:32000.

IHC: In paraffin embedded Human Kidney shows membranous staining in DCT cells. Paraffin embedded Human Prostate. Recommended concentration: 2.5µg/ml.

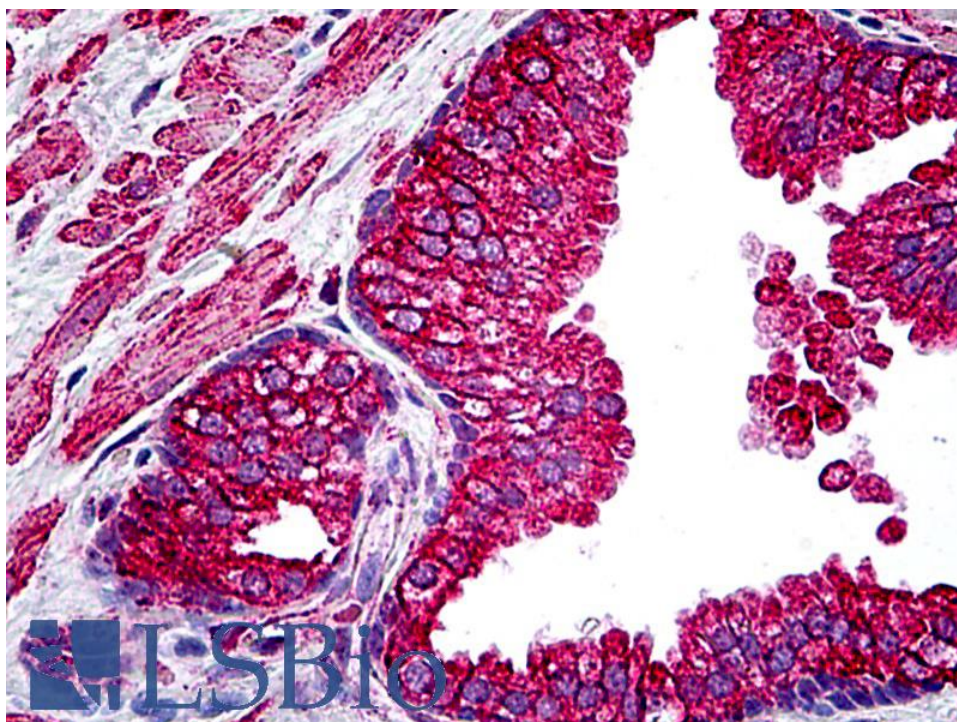
Species Reactivity

Tested: Human

Expected from sequence similarity: Human, Mouse, Rat, Dog, Cow



EB06694 (2.5µg/ml) staining of paraffin embedded Human Kidney. Steamed antigen retrieval with citrate buffer pH 6, AP-staining.



EB06694 (2.5µg/ml) staining of paraffin embedded Human Prostate. Steamed antigen retrieval with citrate buffer pH 6, AP-staining.