



## UK Office

### Everest Biotech Ltd

Cherwell Innovation Centre  
77 Heyford Park  
Upper Heyford  
Oxfordshire  
OX25 5HD  
UK

Enquiries:

[info@everestbiotech.com](mailto:info@everestbiotech.com)

Sales:

[sales@everestbiotech.com](mailto:sales@everestbiotech.com)

Tech support:

[support@everestbiotech.com](mailto:support@everestbiotech.com)

Tel: +44 (0)1869 238326

Fax: +44 (0)1869 238327

## US Office

### Everest Biotech c/o Abcore

405 Maple Street, Suite A106  
Ramona,  
CA 92065  
USA

Inquiries:

[info@everestbiotech.com](mailto:info@everestbiotech.com)

Sales:

[usasales@everestbiotech.com](mailto:usasales@everestbiotech.com)

Tech support:

[support@everestbiotech.com](mailto:support@everestbiotech.com)

Tel: 888-320-4628 (toll-free)

Fax: 888-841-9041

[www.everestbiotech.com](http://www.everestbiotech.com)

**Research Use Only. Not for  
diagnostic or therapeutic use.**

## EB07657 - Goat Anti-CGI58 / ABHD5 Antibody

Size: 100µg specific antibody in 200µl



### Target Protein

**Principal Names:** ABHD5, CGI58 protein, aCGI58, bhydrolase domain containing 5, CDS, IECN2, MGC8731, NCIE2

**Official Symbol:** ABHD5

**Accession Number(s):** NP\_057090.2

**Human GeneID(s):** [51099](#)

**Non-Human GeneID(s):** 67469 (mouse), 316122 (rat)

**Important Comments:** This antibody is not expected to cross-react with ABHD4.

### Immunogen

Peptide with sequence C-FPERPDLADQDR, from the internal region of the protein sequence according to NP\_057090.2.

Please note the [peptide](#) is available for sale.

### Purification and Storage

Purified from goat serum by ammonium sulphate precipitation followed by antigen affinity chromatography using the immunizing peptide.

Supplied at 0.5 mg/ml in Tris saline, 0.02% sodium azide, pH7.3 with 0.5% bovine serum albumin.

Aliquot and store at -20°C. Minimize freezing and thawing.

### Applications Tested

**Peptide ELISA:** antibody detection limit dilution 1:16000.

**Western blot:** Approx 40kDa band observed in lysates of cell lines NIH3T3/3TL (calculated MW of 39.1kDa according to NP\_057090.2). Additional faint bands of 26kDa and 18kDa were also observed, and were successfully blocked by incubation with the immunizing peptide. Recommended concentration: 0.2-0.6µg/ml Primary incubation 1 hour at room temperature.

**IHC:** Paraffin embedded Human Pancreas and Kidney. Recommended concentration: 3.75µg/ml.

**Immunofluorescence:** Strong expression of the protein seen in the nuclei and cytoplasm/vesicles of U2OS cells. Recommended concentration: 10µg/ml.

### Species Reactivity

**Tested:** Human, Mouse

**Expected from sequence similarity:** Human, Mouse, Rat, Dog

### Specific Reference

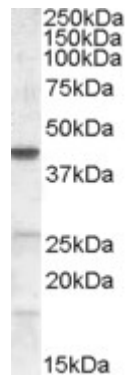
**This antibody has been successfully used in Western blot on Cow:**

Koltes DA, Spurlock DM.

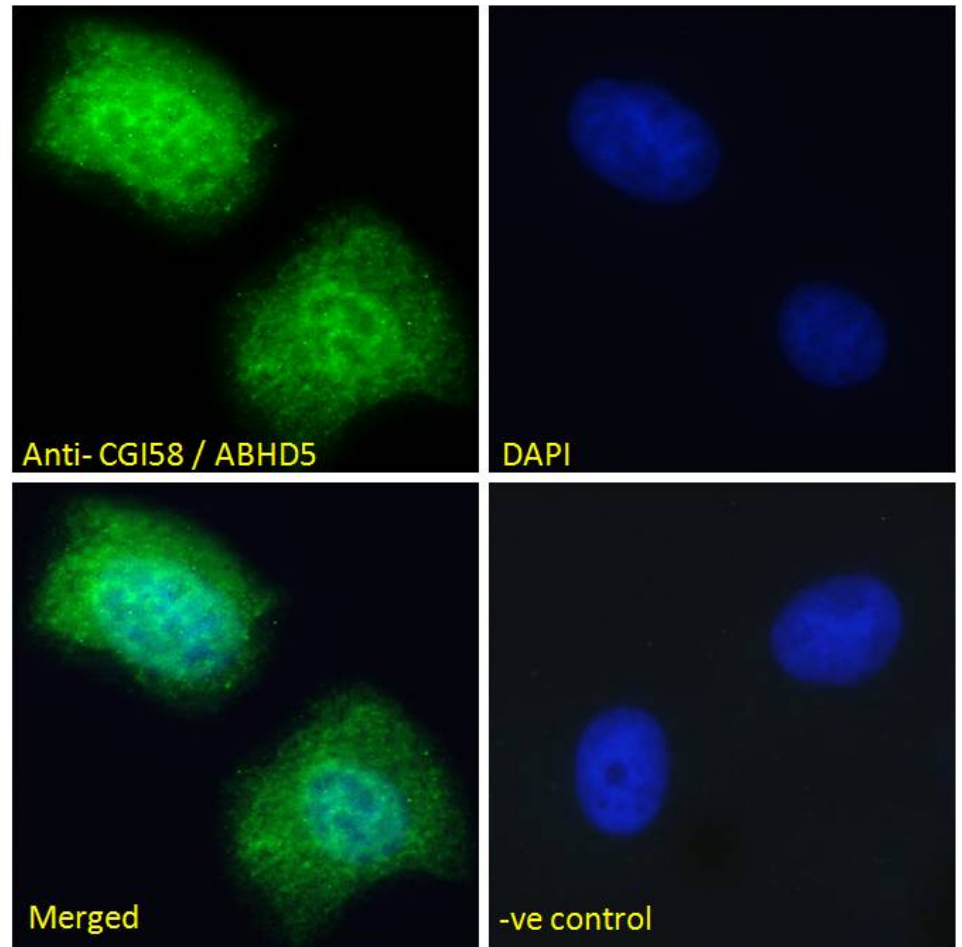
Coordination of lipid droplet-associated proteins during the transition period of Holstein dairy cows.

J Dairy Sci. 2011 Apr;94(4):1839-48.

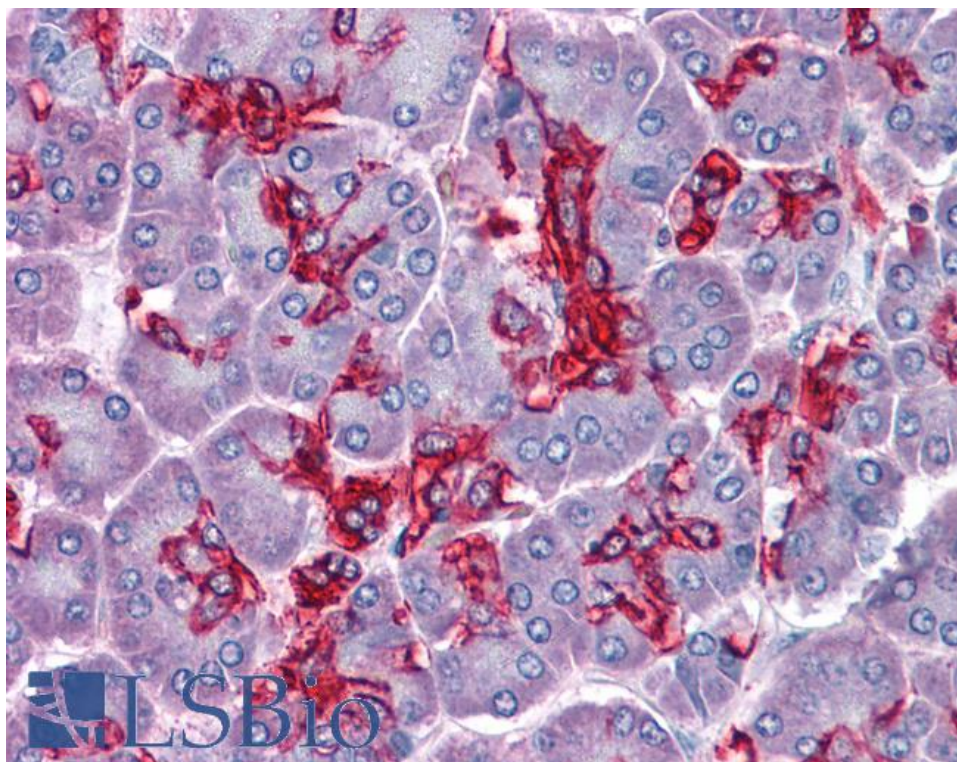
PMID: 21426973



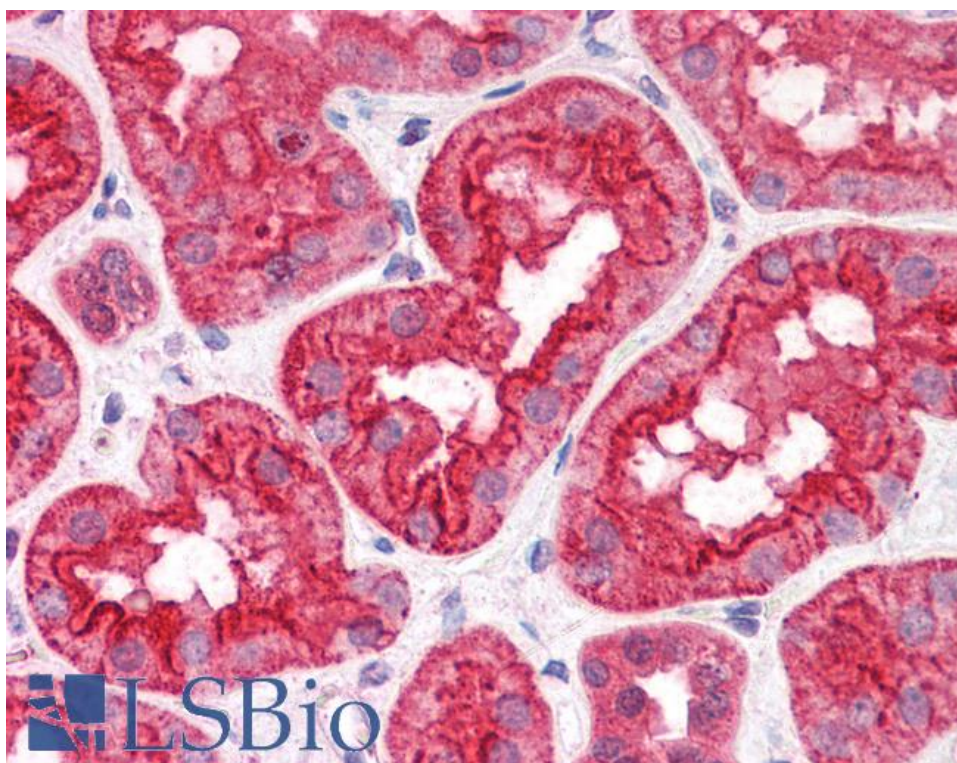
EB07657 (0.2 $\mu$ g/ml) staining of NIH3T3 lysate (35 $\mu$ g protein in RIPA buffer). Detected by chemiluminescence.



EB07657 Immunofluorescence analysis of paraformaldehyde fixed U2OS cells, permeabilized with 0.15% Triton. Primary incubation 1hr (10 $\mu$ g/ml) followed by Alexa Fluor 488 secondary antibody (2 $\mu$ g/ml), showing nuclear and vesicle/ cytoplasmic staining. The nuclear stain is DAPI (blue). Negative control: Unimmunized goat IgG (10 $\mu$ g/ml) followed by Alexa Fluor 488 secondary antibody (2 $\mu$ g/ml).



EB07657 (3.75µg/ml) staining of paraffin embedded Human Pancreas. Steamed antigen retrieval with citrate buffer pH 6, AP-staining.



EB07657 (3.75µg/ml) staining of paraffin embedded Human Kidney. Steamed antigen retrieval with citrate buffer pH 6, AP-staining.