

UK Office

Everest Biotech Ltd

Cherwell Innovation Centre
77 Heyford Park
Upper Heyford
Oxfordshire
OX25 5HD
UK

Enquiries:

info@everestbiotech.com

Sales:

sales@everestbiotech.com

Tech support:

support@everestbiotech.com

Tel: +44 (0)1869 238326

www.everestbiotech.com

**Research Use Only. Not for
diagnostic or therapeutic use.**

EB07447 - Goat Anti-CHA / TCFL5 Antibody

Size: 100µg specific antibody in 200µl



Target Protein

Principal Names: TCFL5, CHA, transcription factor-like 5 (basic helix-loop-helix), E2BP-1, Figlb, MGC46135, HPV-16 E2 binding protein 1, transcription factor-like 5 protein, Cha transcription factor

Official Symbol: TCFL5

Accession Number(s): NP_006593.2

Human GeneID(s): [10732](#)

Non-Human GeneID(s): 277353 (mouse)

Immunogen

Peptide with sequence C-KYIQERHGDSLKKE, from the internal region of the protein sequence according to NP_006593.2.

Please note the [peptide](#) is available for sale.

Purification and Storage

Purified from goat serum by ammonium sulphate precipitation followed by antigen affinity chromatography using the immunizing peptide.

Supplied at 0.5 mg/ml in Tris saline, 0.02% sodium azide, pH7.3 with 0.5% bovine serum albumin.

Aliquot and store at -20°C. Minimize freezing and thawing.

Applications Tested

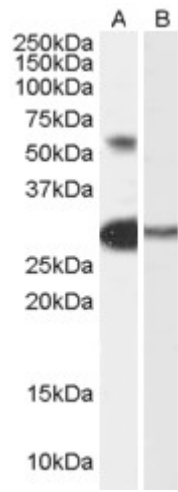
Peptide ELISA: antibody detection limit dilution 1:64000.

Western blot: Approx 55kDa band observed in Human Testis lysates (calculated MW of 52.7kDa according to NP_006593.2). Recommended concentration: 0.3-1µg/ml. An additional band of unknown identity was also consistently observed at 28kDa. This band was greatly reduced by incubation with the immunising peptide.

Species Reactivity

Tested: Human

Expected from sequence similarity: Human, Mouse, Rat, Dog



EB07447 (0.3 μ g/ml) staining of Human Testis lysate (35 μ g protein in RIPA buffer) with (B) and without (A) blocking with the immunising peptide. Primary incubation was 1 hour. Detected by chemiluminescence.