



## International Office

### Everest Biotech Ltd

Vector Laboratories, Inc.  
6737 Mowry Ave  
Newark, CA 94560  
United States

Customer Service:

[customerservice@vectorlabs.com](mailto:customerservice@vectorlabs.com)

Technical Service:

[technical@vectorlabs.com](mailto:technical@vectorlabs.com)

Tel: +1 (800) 227-6666

[www.everestbiotech.com](http://www.everestbiotech.com)

**Research Use Only. Not for  
diagnostic or therapeutic use.**

## EB07255-T - Goat Anti-Chat (mouse) Antibody - Trial

Size: 20µg specific antibody in 40µl



### Target Protein

**Principal Names:** Chat, choline acetyltransferase, B230380D24Rik

**Official Symbol:** Chat

**Accession Number(s):** NP\_034021.1

**Non-Human GeneID(s):** 12647 (mouse), 432359 (rat)

**Important Comments:** This antibody is NOT expected to cross-react to Human CHAT.

### Immunogen

Peptide with sequence C-KERARGPTKPSNLD, from the C Terminus of the protein sequence according to NP\_034021.1.

Please note the [peptide](#) is available for sale.

### Purification and Storage

Purified from goat serum by ammonium sulphate precipitation followed by antigen affinity chromatography using the immunizing peptide.

Supplied at 0.5 mg/ml in Tris saline, 0.02% sodium azide, pH7.3 with 0.5% bovine serum albumin.

Aliquot and store at -20°C. Minimize freezing and thawing.

### Applications Tested

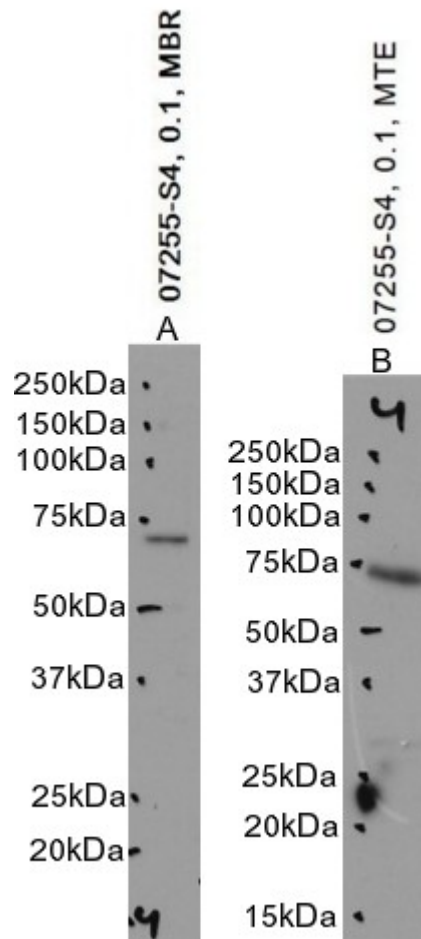
**Peptide ELISA:** antibody detection limit dilution 1:128000.

**Western blot:** Approx 75kDa band observed in Mouse Brain and Testis lysates, and approx. 70kDa in preliminary testing of Rat Testes and Mouse small intestine lysate (calculated MW of 72.3kDa according to Mouse NP\_034021.1). Recommended concentration: 0.1-0.3µg/ml. Primary incubation 1 hour at room temperature.

### Species Reactivity

**Tested:** Mouse

**Expected from sequence similarity:** Mouse, Rat



EB07255 optimised QC. Primary incubation 1 hour at room temperature.  
 Images A and B: Mouse Brain and Testes lysate at primary Ab concentration 0.1ug/ml.  
 (Loaded 35µg protein in RIPA buffer, per lane). Detected by chemiluminescence.