



International Office

Everest Biotech Ltd

Vector Laboratories, Inc.
6737 Mowry Ave
Newark, CA 94560
United States

Customer Service:

customerservice@vectorlabs.com

Technical Service:

technical@vectorlabs.com

Tel: +1 (800) 227-6666

www.everestbiotech.com

**Research Use Only. Not for
diagnostic or therapeutic use.**

EB09840 - Goat Anti-CHCHD3 (aa151-164) Antibody

Size: 100µg specific antibody in 200µl



Target Protein

Principal Names: coiled-coil-helix-coiled-coil-helix domain containing 3, FLJ20420, CHCHD3

Official Symbol: CHCHD3

Accession Number(s): NP_060282.1

Human GeneID(s): [54927](#)

Non-Human GeneID(s): 66075 (mouse), 296966 (rat)

Immunogen

Peptide with sequence C-RSSEFYRVTTTEQYQ, from the internal region of the protein sequence according to NP_060282.1.

Please note the [peptide](#) is available for sale.

Purification and Storage

Purified from goat serum by ammonium sulphate precipitation followed by antigen affinity chromatography using the immunizing peptide.

Supplied at 0.5 mg/ml in Tris saline, 0.02% sodium azide, pH7.3 with 0.5% bovine serum albumin.

Aliquot and store at -20°C. Minimize freezing and thawing.

Applications Tested

Peptide ELISA: antibody detection limit dilution 1:32000.

Western blot: Approx 26.2kDa band observed in Human Placenta lysates (calculated MW of 26kDa according to NP_060282.1). Recommended concentration: 0.3-1µg/ml. A customer reported ~30kDa in THP1 and in human primary monocyte derived dendritic cells.

IHC: Paraffin embedded Human Kidney. Recommended concentration: 5µg/ml.

Additional validation: This antibody has been successfully used in the following paper: Sikorski et al. (2018) PMID: 30377371.

Species Reactivity

Tested: Human

Expected from sequence similarity: Human, Mouse, Rat, Dog, Cow, Sheep

Specific Reference

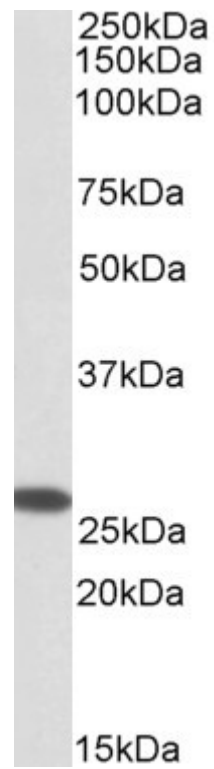
This antibody has been successfully used in the following paper:

Krzysztof Sikorski, Adi Mehta, Marit Inngjerdengen, Flourina Thakor, Simon Kling, Tomas Kalina, Tuula A. Nyman, Maria Ekman Stensland, Wei Zhou, Gustavo A. De Souza, Lars Holden, Jan Stuchly, Markus Templin and Fridtjof Lund-Johansen

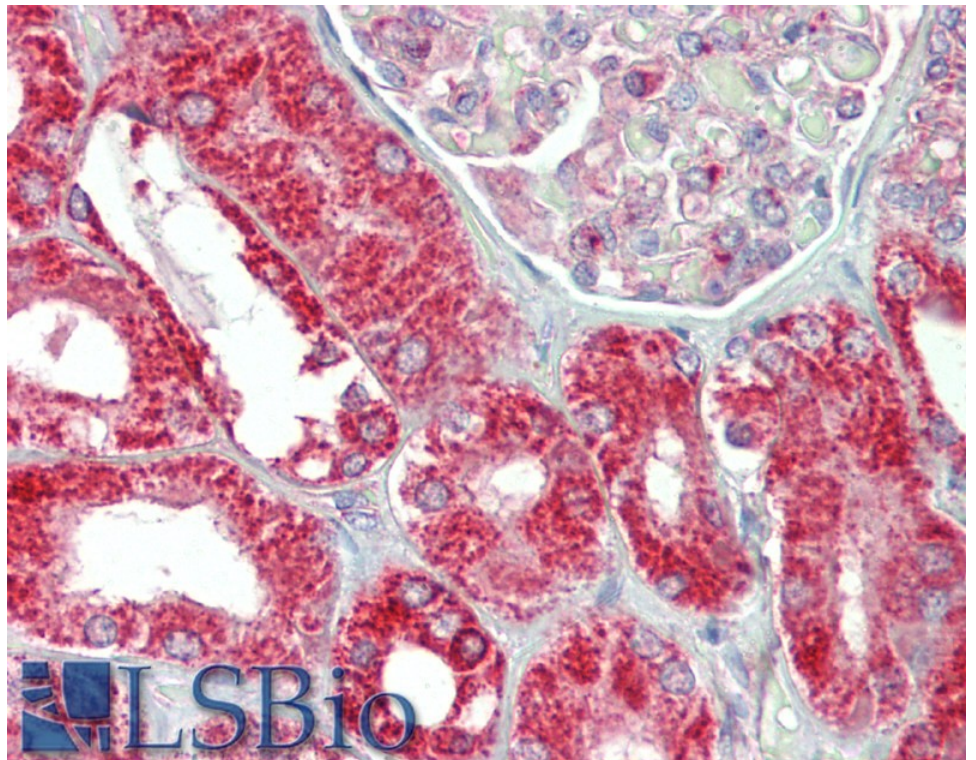
A high-throughput pipeline for validation of antibodies

Nat Methods. 2018 Nov;15(11):909-912

PMID: 30377371



EB09840 (0.3 μ g/ml) staining of Human Placenta lysate (35 μ g protein in RIPA buffer). Primary incubation was 1 hour. Detected by chemiluminescence.



EB09840 (5 μ g/ml) staining of paraffin embedded Human Kidney. Steamed antigen retrieval with citrate buffer pH 6, AP-staining.