



UK Office

Everest Biotech Ltd

Cherwell Innovation Centre
77 Heyford Park
Upper Heyford
Oxfordshire
OX25 5HD
UK

Enquiries:

info@everestbiotech.com

Sales:

sales@everestbiotech.com

Tech support:

support@everestbiotech.com

Tel: +44 (0)1869 238326

www.everestbiotech.com

**Research Use Only. Not for
diagnostic or therapeutic use.**

EB08452 - Goat Anti-CHEK1 Antibody

Size: 100µg specific antibody in 200µl



Target Protein

Principal Names: CHEK1, CHK1 checkpoint homolog (S. pombe), CHK1, CHK1 checkpoint homolog, Checkpoint, S. pombe, homolog of, 1

Official Symbol: CHEK1

Accession Number(s): NP_001265.1

Human GeneID(s): [1111](#)

Immunogen

Peptide with sequence DQPSDSCQEYSD, from the internal region of the protein sequence according to NP_001265.1.

Please note the [peptide](#) is available for sale.

Purification and Storage

Purified from goat serum by ammonium sulphate precipitation followed by antigen affinity chromatography using the immunizing peptide.

Supplied at 0.5 mg/ml in Tris saline, 0.02% sodium azide, pH7.3 with 0.5% bovine serum albumin.

Aliquot and store at -20°C. Minimize freezing and thawing.

Applications Tested

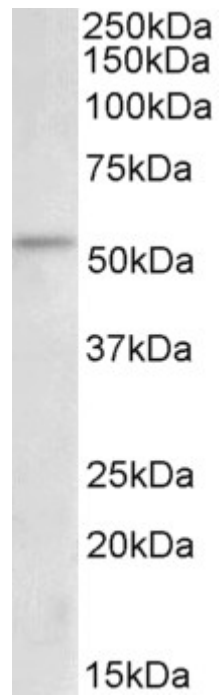
Peptide ELISA: antibody detection limit dilution 1:32000.

Western blot: Approx 50kDa band observed in Rat Thymus lysates (calculated MW of 54.4kDa according to Rat NP_536325.1). Recommended concentration: 1-3µg/ml.

Species Reactivity

Tested: Rat

Expected from sequence similarity: Human, Mouse, Rat, Cow



EB08452 (2 μ g/ml) staining of Rat Thymus lysate (35 μ g protein in RIPA buffer). Primary incubation was 1 hour.
Detected by chemiluminescence.