



UK Office

Everest Biotech Ltd

Cherwell Innovation Centre
77 Heyford Park
Upper Heyford
Oxfordshire
OX25 5HD
UK

Enquiries:

info@everestbiotech.com

Sales:

sales@everestbiotech.com

Tech support:

support@everestbiotech.com

Tel: +44 (0)1869 238326

Fax: +44 (0)1869 238327

US Office

Everest Biotech c/o Abcore

405 Maple Street, Suite A106
Ramona,
CA 92065
USA

Inquiries:

info@everestbiotech.com

Sales:

usasales@everestbiotech.com

Tech support:

support@everestbiotech.com

Tel: 888-320-4628 (toll-free)

Fax: 888-841-9041

www.everestbiotech.com

**Research Use Only. Not for
diagnostic or therapeutic use.**

EB05819 - Goat Anti-CHFR Antibody

Size: 100µg specific antibody in 200µl



Target Protein

Principal Names: CHFR, checkpoint with forkhead and ring finger domains, FLJ10796, FLJ33629, RNF116, RNF196, E3 ubiquitin-protein ligase CHFR, RING finger protein 196

Official Symbol: CHFR

Accession Number(s): NP_001154816.1; NP_001154817.1; NP_001154818.1; NP_060693.2; NP_001154819.1

Human GeneID(s): [55743](#)

Non-Human GeneID(s): 231600 (mouse), 288734 (rat)

Important Comments: This antibody is expected to recognise all reported isoforms.

Immunogen

Peptide with sequence KFNHICEQTRFKN, from the C Terminus of the protein sequence according to NP_001154816.1; NP_001154817.1; NP_001154818.1; NP_060693.2; NP_001154819.1.

Please note the [peptide](#) is available for sale.

Purification and Storage

Purified from goat serum by ammonium sulphate precipitation followed by antigen affinity chromatography using the immunizing peptide.

Supplied at 0.5 mg/ml in Tris saline, 0.02% sodium azide, pH7.3 with 0.5% bovine serum albumin.

Aliquot and store at -20°C. Minimize freezing and thawing.

Applications Tested

Peptide ELISA: antibody detection limit dilution 1:64000.

Western blot: Preliminary experiments gave an approx 80kDa band in human brain lysates at 0.5µg/ml, this band was successfully blocked by incubation with the immunising peptide. Please note that currently we cannot find an explanation in the literature for the band we observe given the predicted size of approx. 72kDa according to NP_060693.

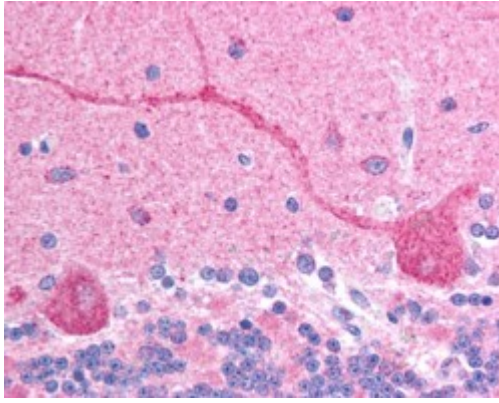
IHC: In paraffin embedded Human Brain (Cerebellum) shows stained Purkinje cells.

Recommended concentration: 2.5µg/ml.

Species Reactivity

Tested: Human

Expected from sequence similarity: Human, Mouse, Rat, Pig Cow



EB05819 (2.5µg/ml) staining of paraffin embedded human brain (cerebellum). Steamed antigen retrieval with citrate buffer pH 6, AP-staining.