



## International Office

### Everest Biotech Ltd

Vector Laboratories, Inc.  
6737 Mowry Ave  
Newark, CA 94560  
United States

Customer Service:

[customerservice@vectorlabs.com](mailto:customerservice@vectorlabs.com)

Technical Service:

[technical@vectorlabs.com](mailto:technical@vectorlabs.com)

Tel: +1 (800) 227-6666

[www.everestbiotech.com](http://www.everestbiotech.com)

**Research Use Only. Not for  
diagnostic or therapeutic use.**

## EB11644 - Goat Anti-CHRM2 (aa352-364) Antibody

Size: 100µg specific antibody in 200µl



### Target Protein

**Principal Names:** 7TM receptor, cholinergic receptor, muscarinic 2, CHRM2, FLJ43243, HM2, MGC120006, MGC120007, muscarinic acetylcholine receptor M2, muscarinic M2 receptor, OTTHUMP00000208393, OTTHUMP00000208394, OTTHUMP00000208395, OTTHUMP00000208396

**Official Symbol:** CHRM2

**Accession Number(s):** NP\_000730.1

**Human GeneID(s):** [1129](#)

**Non-Human GeneID(s):** 243764 (mouse)

**Important Comments:** Reported variants represent identical protein: NP\_001006628.1, NP\_001006633.1, NP\_001006627.1, NP\_000730.1, NP\_001006629.1, NP\_001006630.1, NP\_001006631.1, NP\_001006632.1.

### Immunogen

Peptide with sequence C-QNGDEKQNVARK, from the internal region of the protein sequence according to NP\_000730.1.

Please note the [peptide](#) is available for sale.

### Purification and Storage

Purified from goat serum by ammonium sulphate precipitation followed by antigen affinity chromatography using the immunizing peptide.

Supplied at 0.5 mg/ml in Tris saline, 0.02% sodium azide, pH7.3 with 0.5% bovine serum albumin.

Aliquot and store at -20°C. Minimize freezing and thawing.

### Applications Tested

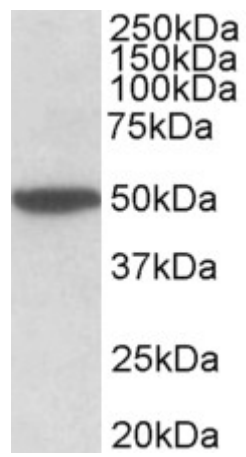
**Peptide ELISA:** antibody detection limit dilution 1:128000.

**Western blot:** Approx 50kDa band observed in Mouse Brain lysates (calculated MW of 51.5kDa according to Mouse NP\_987076.2). Recommended concentration: 0.5-2µg/ml.

### Species Reactivity

**Tested:** Mouse

**Expected from sequence similarity:** Human, Mouse, Dog, Pig, Cow



EB11644 (2 $\mu$ g/ml) staining of Mouse Brain lysate (35 $\mu$ g protein in RIPA buffer). Primary incubation was 1 hour.  
Detected by chemiluminescence.