

UK Office

Everest Biotech Ltd
Cherwell Innovation Centre
77 Heyford Park
Upper Heyford
Oxfordshire
OX25 5HD
UK

Enquiries:

info@everestbiotech.com

Sales:

sales@everestbiotech.com

Tech support:

support@everestbiotech.com

Tel: +44 (0)1869 238326

Fax: +44 (0)1869 238327

US Office

Everest Biotech c/o Abcore
405 Maple Street, Suite A106
Ramona,
CA 92065
USA

Inquiries:

info@everestbiotech.com

Sales:

usasales@everestbiotech.com

Tech support:

support@everestbiotech.com

Tel: 888-320-4628 (toll-free)

Fax: 888-841-9041

www.everestbiotech.com

**Research Use Only. Not for
diagnostic or therapeutic use.**

EB08852 - Goat Anti-CHRNA4 (aa29-43) Antibody

Size: 100µg specific antibody in 200µl



Target Protein

Principal Names: CHRNA4, cholinergic receptor, nicotinic, alpha 4, BFNC, EBN, EBN1, NACRA4, cholinergic receptor, nicotinic, alpha 4 subunit, cholinergic receptor, nicotinic, alpha polypeptide 4, neuronal acetylcholine receptor alpha 4 subunit, neuronal nicotinic acetylcholine receptor alpha-4 subunit

Official Symbol: CHRNA4

Accession Number(s): NP_000735.1

Human GeneID(s): [1137](#)

Non-Human GeneID(s): 11438 (mouse), 25590 (rat)

Important Comments: This antibody is expected NOT to cross-react with the similar alpha 2 subunit.

Immunogen

Peptide with sequence C-HVETRAHAEERLLKK, from the internal region of the protein sequence according to NP_000735.1.

Please note the [peptide](#) is available for sale.

Purification and Storage

Purified from goat serum by ammonium sulphate precipitation followed by antigen affinity chromatography using the immunizing peptide.

Supplied at 0.5 mg/ml in Tris saline, 0.02% sodium azide, pH7.3 with 0.5% bovine serum albumin.

Aliquot and store at -20°C. Minimize freezing and thawing.

Applications Tested

Peptide ELISA: antibody detection limit dilution 1:64000.

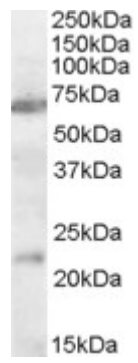
Western blot: Approx 70kDa band observed in Rat Brain lysates (calculated MW of 70.0kDa according to Human NP_000735.1 and of 70.2kDa according to Rat NP_077330.1). Recommended concentration: 1-3µg/ml. An additional band of unknown identity was also consistently observed at 22kDa. This band was successfully blocked by incubation with the immunising peptide. We would appreciate any feedback from people in the field - have any such results been reported with other antibodies/lysates? Have any further splice variants/modified forms been reported? ~75kDa confirmed in both human and rat tissues as the glycoprotein by an anonymous customer.

This antibody was shown unfit for immune precipitation.

Species Reactivity

Tested: Human, Rat

Expected from sequence similarity: Human, Mouse, Rat, Dog, Cow



EB08852 (0.3 μ g/ml) staining of Rat Brain lysate (35 μ g protein in RIPA buffer). Primary incubation was 1 hour.
Detected by chemiluminescence.