



UK Office

Everest Biotech Ltd

Cherwell Innovation Centre
77 Heyford Park
Upper Heyford
Oxfordshire
OX25 5HD
UK

Enquiries:

info@everestbiotech.com

Sales:

sales@everestbiotech.com

Tech support:

support@everestbiotech.com

Tel: +44 (0)1869 238326

Fax: +44 (0)1869 238327

US Office

Everest Biotech c/o Abcore

405 Maple Street, Suite A106
Ramona,
CA 92065
USA

Inquiries:

info@everestbiotech.com

Sales:

usasales@everestbiotech.com

Tech support:

support@everestbiotech.com

Tel: 888-320-4628 (toll-free)

Fax: 888-841-9041

www.everestbiotech.com

**Research Use Only. Not for
diagnostic or therapeutic use.**

EB08853 - Goat Anti-CHRNA7 Antibody

Size: 100µg specific antibody in 200µl



Target Protein

Principal Names: CHRNA7, cholinergic receptor, nicotinic, alpha 7, NACHRA7, a7 nicotinic acetylcholine receptor, alpha 7 neuronal nicotinic acetylcholine receptor, alpha-7 nicotinic cholinergic receptor subunit, alpha7 nicotinic receptor subunit, cholinergic receptor, nicotinic, alpha polypeptide 7, neuronal acetylcholine receptor protein, alpha-7 chain, neuronal nicotinic acetylcholine receptor alpha-7 subunit, nicotinic acetylcholine alpha-7 subunit, nicotinic acetylcholine receptor alpha7 subunit, nicotinic cholinergic receptor alpha 7

Official Symbol: CHRNA7

Accession Number(s): NP_000737.1

Human GeneID(s): [1139](#)

Non-Human GeneID(s): 11441 (mouse), 25302 (rat)

Important Comments: This antibody also reacts with CHRNA7-FAM7A fusion isoform 1 (NP_647536.1) and isoform 2 (NP_683709.1).

Immunogen

Peptide with sequence KRPGEDKVRPACQHKQ, from the internal region of the protein sequence according to NP_000737.1.

Please note the [peptide](#) is available for sale.

Purification and Storage

Purified from goat serum by ammonium sulphate precipitation followed by antigen affinity chromatography using the immunizing peptide.

Supplied at 0.5 mg/ml in Tris saline, 0.02% sodium azide, pH7.3 with 0.5% bovine serum albumin.

Aliquot and store at -20°C. Minimize freezing and thawing.

Applications Tested

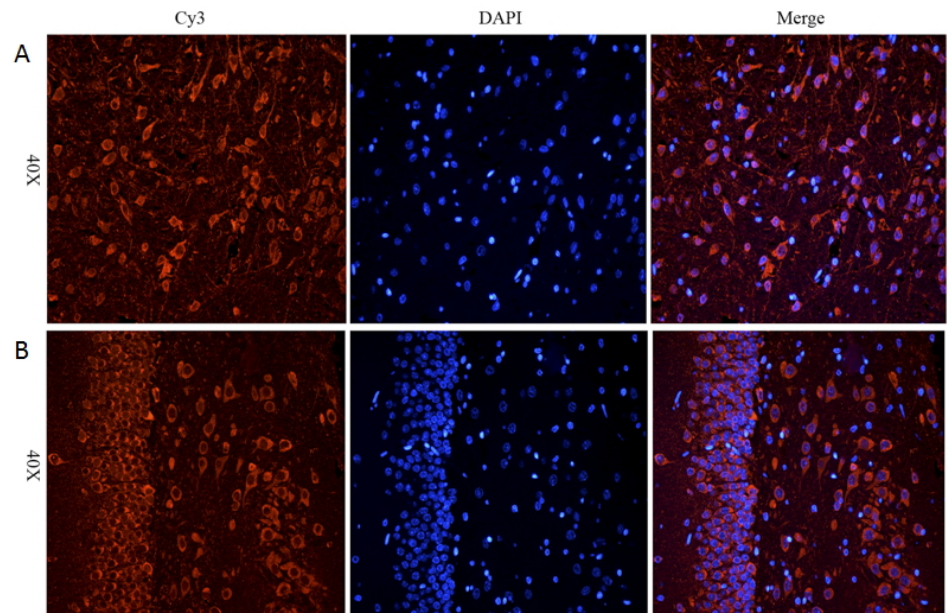
Peptide ELISA: antibody detection limit dilution 1:128000.

IHC: In paraffin embedded Rat Cerebral Cortex and Rat Hippocampus shows membranous staining in neural cells. Recommended concentration: 5-10µg/ml. Paraffin embedded Human Brain (Cortex). Recommended concentration: 3-6µg/ml.

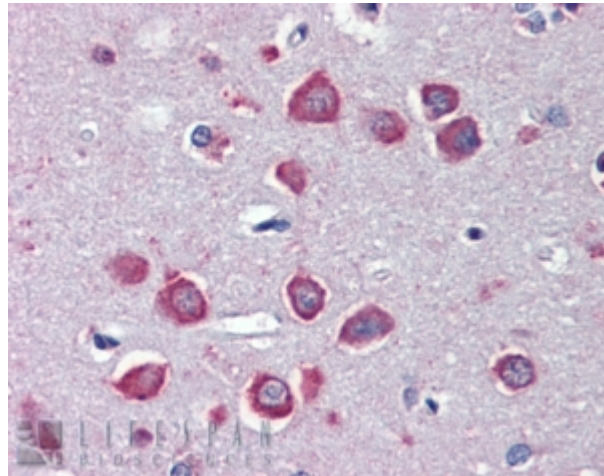
Species Reactivity

Tested: Human, Rat

Expected from sequence similarity: Human, Mouse, Rat, Dog, Cow



EB08853 (5ug/ml) staining of paraffin embedded Rat Cerebral Cortex (A) and Rat Hippocampus (B), CRY-staining with DAPI nuclear counter stain in blue. Antigen retrieval with citrate buffer pH 6 at 95-98C.



EB08853 (3µg/ml) staining of paraffin embedded Human Cortex. Steamed antigen retrieval with citrate buffer pH 6, AP-staining.