

UK Office

Everest Biotech Ltd

Cherwell Innovation Centre
77 Heyford Park
Upper Heyford
Oxfordshire
OX25 5HD
UK

Enquiries:

info@everestbiotech.com

Sales:

sales@everestbiotech.com

Tech support:

support@everestbiotech.com

Tel: +44 (0)1869 238326

www.everestbiotech.com

**Research Use Only. Not for
diagnostic or therapeutic use.**

EB08531 - Goat Anti-CHRN3 Antibody

Size: 100µg specific antibody in 200µl



Target Protein

Principal Names: CHRN3, cholinergic receptor, nicotinic, beta 3, acetylcholine receptor, neuronal nicotinic, beta-3 subunit, cholinergic receptor, nicotinic, beta polypeptide 3

Official Symbol: CHRN3

Accession Number(s): NP_000740.1

Human GeneID(s): [1142](#)

Non-Human GeneID(s): 108043 (mouse), 171131 (rat)

Immunogen

Peptide with sequence C-SRHVKKEHFISQ, from the internal region of the protein sequence according to NP_000740.1.

Please note the [peptide](#) is available for sale.

Purification and Storage

Purified from goat serum by ammonium sulphate precipitation followed by antigen affinity chromatography using the immunizing peptide.

Supplied at 0.5 mg/ml in Tris saline, 0.02% sodium azide, pH7.3 with 0.5% bovine serum albumin.

Aliquot and store at -20°C. Minimize freezing and thawing.

Applications Tested

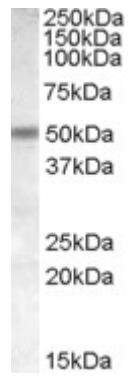
Peptide ELISA: antibody detection limit dilution 1:16000.

Western blot: Approx. 50kDa band observed in Human Brain (Cerebellum) lysates (calculated MW of 52.7kDa according to NP_000740.1). Recommended concentration: 1-3µg/ml.

Species Reactivity

Tested: Human

Expected from sequence similarity: Human, Mouse, Rat



EB08531 (1 μ g/ml) staining of Human Cerebellum lysate (35 μ g protein in RIPA buffer). Primary incubation was 1 hour. Detected by chemiluminescence.