



## UK Office

### Everest Biotech Ltd

Cherwell Innovation Centre  
77 Heyford Park  
Upper Heyford  
Oxfordshire  
OX25 5HD  
UK

Enquiries:

[info@everestbiotech.com](mailto:info@everestbiotech.com)

Sales:

[sales@everestbiotech.com](mailto:sales@everestbiotech.com)

Tech support:

[support@everestbiotech.com](mailto:support@everestbiotech.com)

Tel: +44 (0)1869 238326

Fax: +44 (0)1869 238327

## US Office

### Everest Biotech c/o Abcore

405 Maple Street, Suite A106  
Ramona,  
CA 92065  
USA

Inquiries:

[info@everestbiotech.com](mailto:info@everestbiotech.com)

Sales:

[usasales@everestbiotech.com](mailto:usasales@everestbiotech.com)

Tech support:

[support@everestbiotech.com](mailto:support@everestbiotech.com)

Tel: 888-320-4628 (toll-free)

Fax: 888-841-9041

[www.everestbiotech.com](http://www.everestbiotech.com)

**Research Use Only. Not for  
diagnostic or therapeutic use.**

## EB07271-T - Goat Anti-Chromogranin A precursor Antibody - Trial

Size: 20µg specific antibody in 40µl



### Target Protein

**Principal Names:** chromogranin A precursor, chromogranin A (parathyroid secretory protein 1), CHGA, CGA, parathyroid secretory protein 1, Vasostatin, Pancreastatin, Parastatin, Pituitary secretory protein I, SP1

**Official Symbol:** CHGA

**Accession Number(s):** NP\_001266.1; NP\_001288619.1

**Human GeneID(s):** [1113](#)

### Immunogen

Peptide with sequence C-QGAKERAHQKKH, from the internal region of the protein sequence according to NP\_001266.1; NP\_001288619.1.

Please note the [peptide](#) is available for sale.

### Purification and Storage

Purified from goat serum by ammonium sulphate precipitation followed by antigen affinity chromatography using the immunizing peptide.

Supplied at 0.5 mg/ml in Tris saline, 0.02% sodium azide, pH7.3 with 0.5% bovine serum albumin.

Aliquot and store at -20°C. Minimize freezing and thawing.

### Applications Tested

**Peptide ELISA:** antibody detection limit dilution 1:128000.

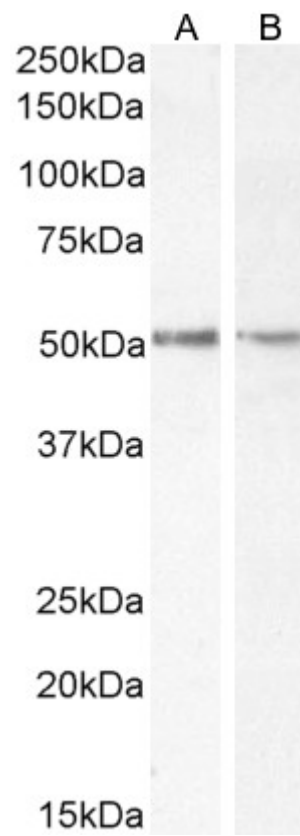
**Western blot:** Approx 50kDa band observed in lysates of cell lines Jurkat and LNCaP, and in Human Cerebellum, Pancreas and Kidney lysates. A band at 35kDa was also observed in pancreas lysate (calculated MW of 50.7 kDa according to NP\_001266.1 isoform 1 and 34.3kDa according to NP\_001288619.1 isoform 2). Recommended concentration: 0.3-1µg/ml. Primary incubation 1 hour at room temperature.

**Flow Cytometry:** Flow cytometric analysis of Jurkat cells. Recommended concentration: 10ug/ml.

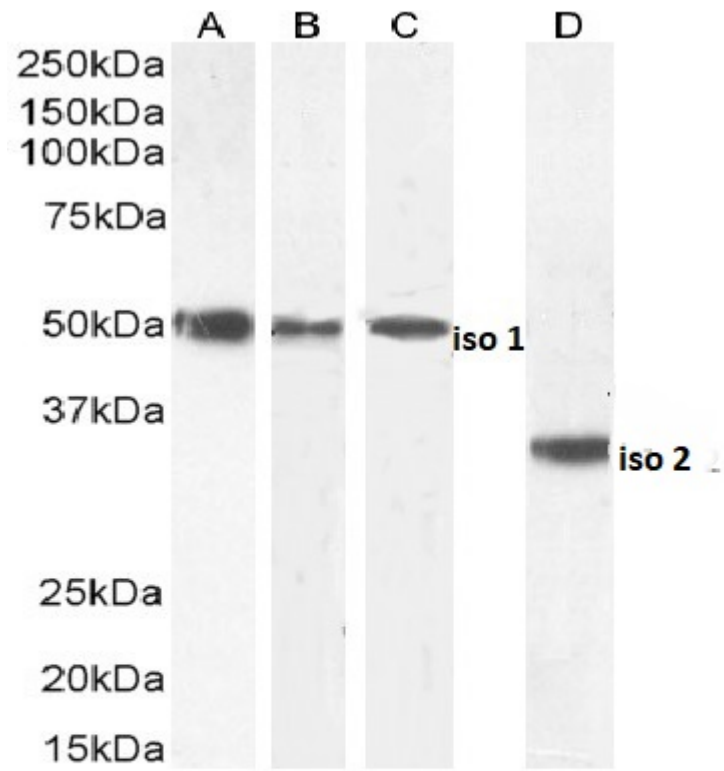
### Species Reactivity

**Tested:** Human

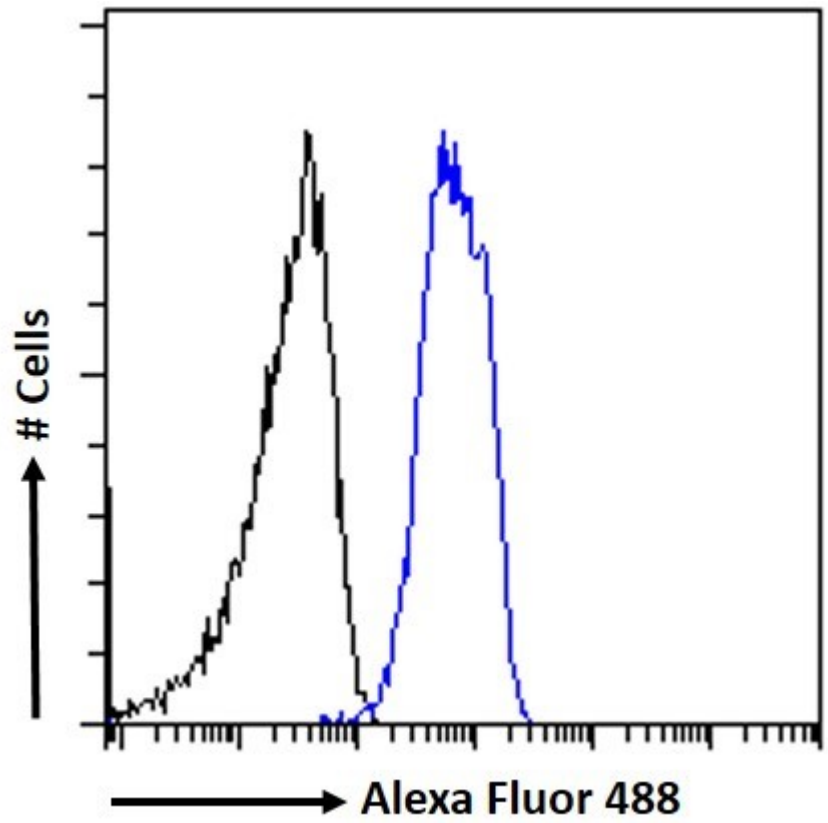
**Expected from sequence similarity:** Human



EB07271 (1 µg/ml) staining of Jurkat (A) and LNCaP (B) cell lysate (35 µg protein in RIPA buffer). Detected by chemiluminescence.



EB07271 (0.3µg/ml) staining of Human Cerebellum (A) and (1ug/ml) Kidney (B), Pancreas iso 1 © and Pancreas iso 2 (D) lysate (35µg protein in RIPA buffer). Detected by chemiluminescence.



EB07271 Flow cytometric analysis of paraformaldehyde fixed Jurkat cells (blue line), permeabilized with 0.5% Triton. Primary incubation 1hr (10ug/ml) followed by Alexa Fluor 488 secondary antibody (1ug/ml). IgG control: Unimmunized goat IgG (black line) followed by Alexa Fluor 488 secondary antibody.