



International Office

Everest Biotech Ltd

Vector Laboratories, Inc.
6737 Mowry Ave
Newark, CA 94560
United States

Customer Service:

customerservice@vectorlabs.com

Technical Service:

technical@vectorlabs.com

Tel: +1 (800) 227-6666

www.everestbiotech.com

**Research Use Only. Not for
diagnostic or therapeutic use.**

EB07271 - Goat Anti-Chromogranin A precursor Antibody

Size: 100µg specific antibody in 200µl



Target Protein

Principal Names: chromogranin A precursor, chromogranin A (parathyroid secretory protein 1), CHGA, CGA, parathyroid secretory protein 1, Vasostatin, Pancreastatin, Parastatin, Pituitary secretory protein I, SP1

Official Symbol: CHGA

Accession Number(s): NP_001266.1; NP_001288619.1

Human GeneID(s): [1113](#)

Immunogen

Peptide with sequence C-QGAKERAHQKKH, from the internal region of the protein sequence according to NP_001266.1; NP_001288619.1.

Please note the [peptide](#) is available for sale.

Purification and Storage

Purified from goat serum by ammonium sulphate precipitation followed by antigen affinity chromatography using the immunizing peptide.

Supplied at 0.5 mg/ml in Tris saline, 0.02% sodium azide, pH7.3 with 0.5% bovine serum albumin.

Aliquot and store at -20°C. Minimize freezing and thawing.

Applications Tested

Peptide ELISA: antibody detection limit dilution 1:128000.

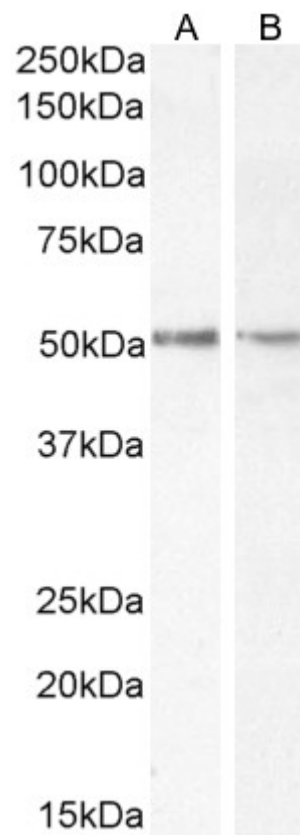
Western blot: Approx 50kDa band observed in lysates of cell lines Jurkat and LNCaP, and in Human Cerebellum, Pancreas and Kidney lysates. A band at 35kDa was also observed in pancreas lysate (calculated MW of 50.7 kDa according to NP_001266.1 isoform 1 and 34.3kDa according to NP_001288619.1 isoform 2). Recommended concentration: 0.3-1µg/ml. Primary incubation 1 hour at room temperature.

Flow Cytometry: Flow cytometric analysis of Jurkat cells. Recommended concentration: 10ug/ml.

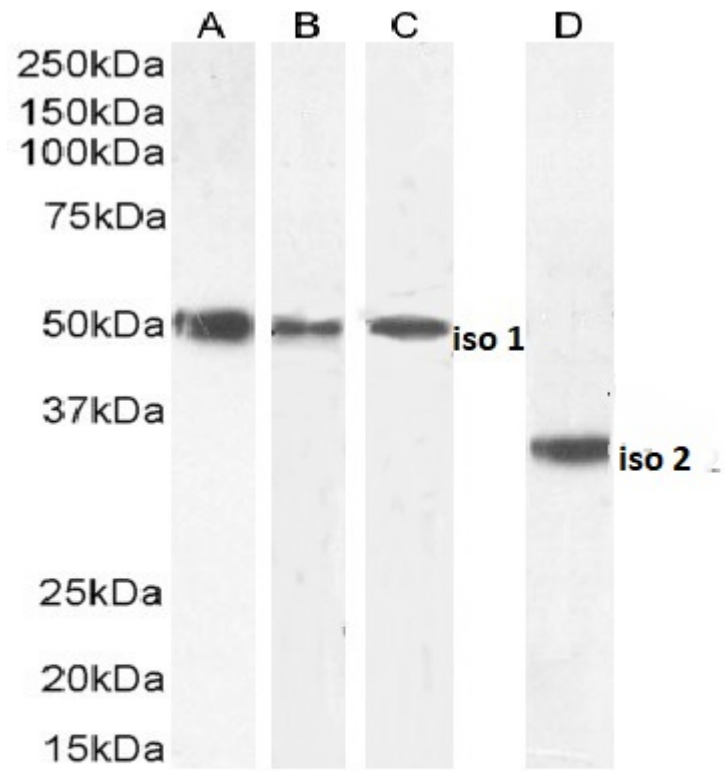
Species Reactivity

Tested: Human

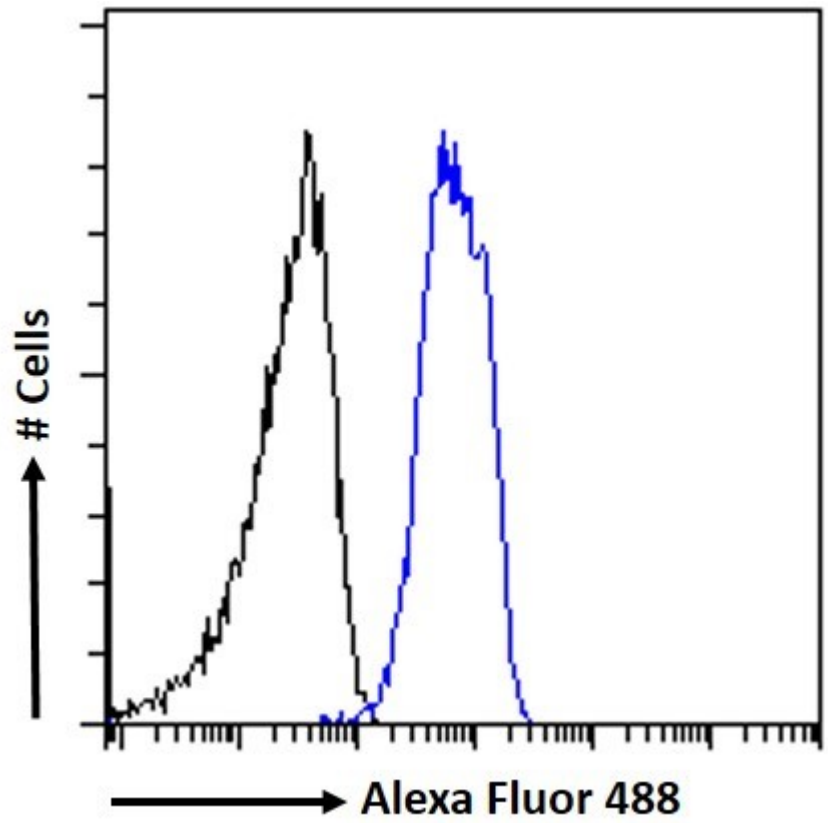
Expected from sequence similarity: Human



EB07271 (1 μ g/ml) staining of Jurkat (A) and LNCaP (B) cell lysate (35 μ g protein in RIPA buffer). Detected by chemiluminescence.



EB07271 (0.3µg/ml) staining of Human Cerebellum (A) and (1ug/ml) Kidney (B), Pancreas iso 1 © and Pancreas iso 2 (D) lysate (35µg protein in RIPA buffer). Detected by chemiluminescence.



EB07271 Flow cytometric analysis of paraformaldehyde fixed Jurkat cells (blue line), permeabilized with 0.5% Triton. Primary incubation 1hr (10ug/ml) followed by Alexa Fluor 488 secondary antibody (1ug/ml). IgG control: Unimmunized goat IgG (black line) followed by Alexa Fluor 488 secondary antibody.