



UK Office

Everest Biotech Ltd

Cherwell Innovation Centre
77 Heyford Park
Upper Heyford
Oxfordshire
OX25 5HD
UK

Enquiries:

info@everestbiotech.com

Sales:

sales@everestbiotech.com

Tech support:

support@everestbiotech.com

Tel: +44 (0)1869 238326

Fax: +44 (0)1869 238327

US Office

Everest Biotech c/o Abcore

405 Maple Street, Suite A106
Ramona,
CA 92065
USA

Inquiries:

info@everestbiotech.com

Sales:

usasales@everestbiotech.com

Tech support:

support@everestbiotech.com

Tel: 888-320-4628 (toll-free)

Fax: 888-841-9041

www.everestbiotech.com

**Research Use Only. Not for
diagnostic or therapeutic use.**

EB07271 - Goat Anti-Chromogranin A precursor Antibody

Size: 100µg specific antibody in 200µl



Target Protein

Principal Names: chromogranin A precursor, chromogranin A (parathyroid secretory protein 1), CHGA, CGA, parathyroid secretory protein 1, Vasostatin, Pancreastatin, Parastatin, Pituitary secretory protein I, SP1

Official Symbol: CHGA

Accession Number(s): NP_001266.1; NP_001288619.1

Human GeneID(s): [1113](#)

Immunogen

Peptide with sequence C-QGAKERAHQKKH, from the internal region of the protein sequence according to NP_001266.1; NP_001288619.1.

Please note the [peptide](#) is available for sale.

Purification and Storage

Purified from goat serum by ammonium sulphate precipitation followed by antigen affinity chromatography using the immunizing peptide.

Supplied at 0.5 mg/ml in Tris saline, 0.02% sodium azide, pH7.3 with 0.5% bovine serum albumin.

Aliquot and store at -20°C. Minimize freezing and thawing.

Applications Tested

Peptide ELISA: antibody detection limit dilution 1:128000.

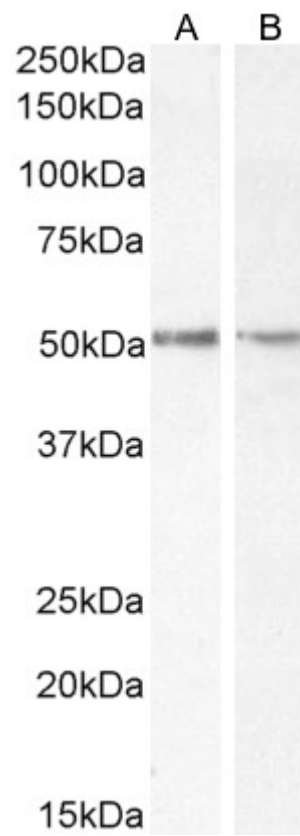
Western blot: Approx 50kDa band observed in lysates of cell lines Jurkat and LNCaP, and in Human Cerebellum, Pancreas and Kidney lysates. A band at 35kDa was also observed in pancreas lysate (calculated MW of 50.7 kDa according to NP_001266.1 isoform 1 and 34.3kDa according to NP_001288619.1 isoform 2). Recommended concentration: 0.3-1µg/ml. Primary incubation 1 hour at room temperature.

Flow Cytometry: Flow cytometric analysis of Jurkat cells. Recommended concentration: 10ug/ml.

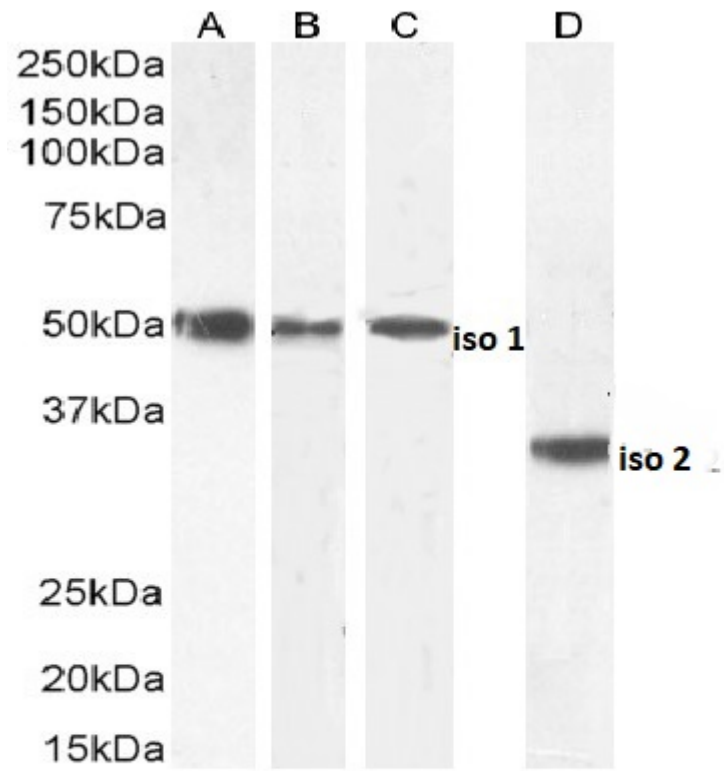
Species Reactivity

Tested: Human

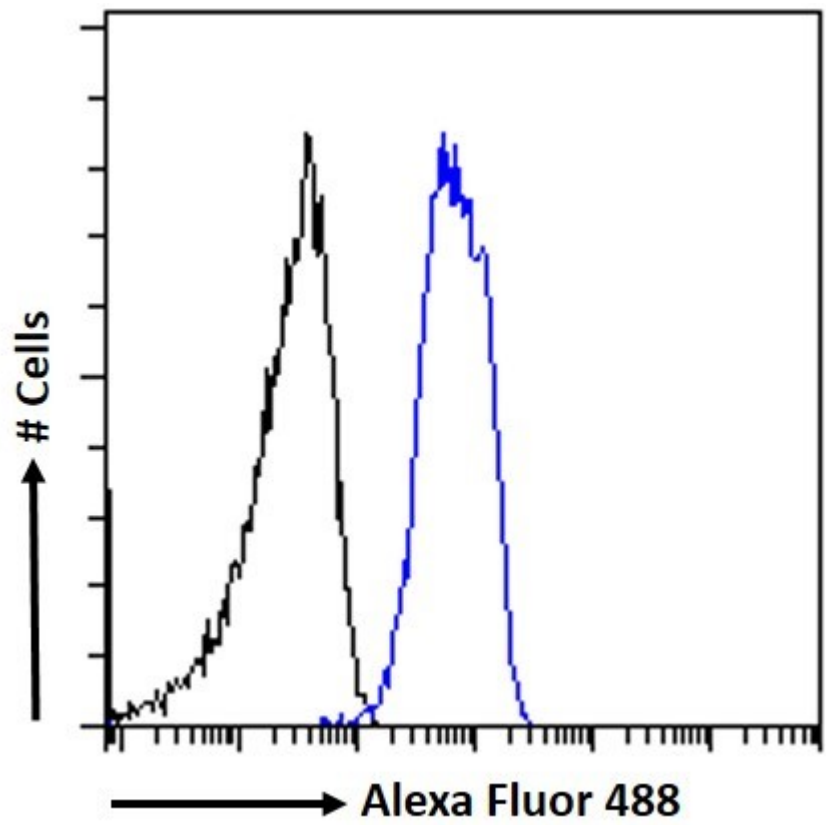
Expected from sequence similarity: Human



EB07271 (1 μ g/ml) staining of Jurkat (A) and LNCaP (B) cell lysate (35 μ g protein in RIPA buffer). Detected by chemiluminescence.



EB07271 (0.3µg/ml) staining of Human Cerebellum (A) and (1ug/ml) Kidney (B), Pancreas iso 1 © and Pancreas iso 2 (D) lysate (35µg protein in RIPA buffer). Detected by chemiluminescence.



EB07271 Flow cytometric analysis of paraformaldehyde fixed Jurkat cells (blue line), permeabilized with 0.5% Triton. Primary incubation 1hr (10ug/ml) followed by Alexa Fluor 488 secondary antibody (1ug/ml). IgG control: Unimmunized goat IgG (black line) followed by Alexa Fluor 488 secondary antibody.