



## International Office

### Everest Biotech Ltd

Vector Laboratories, Inc.  
6737 Mowry Ave  
Newark, CA 94560  
United States

Customer Service:

[customerservice@vectorlabs.com](mailto:customerservice@vectorlabs.com)

Technical Service:

[technical@vectorlabs.com](mailto:technical@vectorlabs.com)

Tel: +1 (800) 227-6666

[www.everestbiotech.com](http://www.everestbiotech.com)

**Research Use Only. Not for  
diagnostic or therapeutic use.**

## EB11382 - Goat Anti-CHUK Antibody

Size: 100µg specific antibody in 200µl



### Target Protein

**Principal Names:** conserved helix-loop-helix ubiquitous kinase, I-kappa-B kinase 1, I-kappa-B kinase-alpha, Ikb kinase alpha subunit, IKBKA, IKK1, IKKA, IKK-a kinase, IKK-alpha, inhibitor of nuclear factor kappa-B kinase subunit alpha, NFKB1A, Nuclear factor NFkappaB inhibitor kinase alpha, TCF16, TCF-16, transcription factor 16, CHUK

**Official Symbol:** CHUK

**Accession Number(s):** NP\_001269.3

**Human GeneID(s):** [1147](#)

### Immunogen

Peptide with sequence EHDHSLSCVVTPQD, from the internal region (near C Terminus) of the protein sequence according to NP\_001269.3.

Please note the [peptide](#) is available for sale.

### Purification and Storage

Purified from goat serum by ammonium sulphate precipitation followed by antigen affinity chromatography using the immunizing peptide.

Supplied at 0.5 mg/ml in Tris saline, 0.02% sodium azide, pH7.3 with 0.5% bovine serum albumin.

Aliquot and store at -20°C. Minimize freezing and thawing.

### Applications Tested

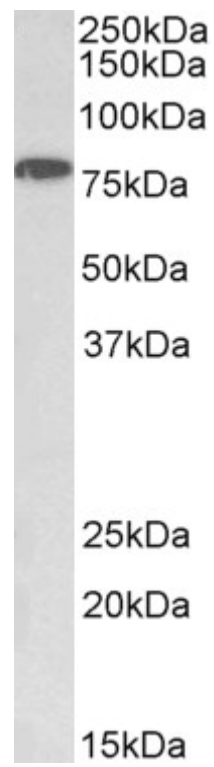
**Peptide ELISA:** antibody detection limit dilution 1:128000.

**Western blot:** Approx 80kDa band observed in nuclear lysates of cell line HeLa (calculated MW of 84.6kDa according to NP\_001269.3). Recommended concentration: 1-3µg/ml.

### Species Reactivity

**Tested:** Human

**Expected from sequence similarity:** Human



EB11382 (1 $\mu$ g/ml) staining of HeLa nuclear lysate (35 $\mu$ g protein in RIPA buffer). Primary incubation was 1 hour.  
Detected by chemiluminescence.